



A superb, beautifully appointed one bedroom apartment situated in the heart of Mayfair.

Maddox Street, London, W1S

Guide Price: £1,200,000

Leasehold (approximately 991 years remaining)

savills

A superb, beautifully appointed one bedroom apartment situated in the heart of

Open plan kitchen/reception room • One bedroom • One bathroom • Third floor • Lift access • EPC = C • Service charge:
• Ground rent:

Local Information

Maddox Street is located to the east of Hyde Park and to the north of Piccadilly. The property is within reach of the many amenities, restaurants and flagship designer stores offered by Oxford Street and Regent Street and their surrounding areas.

The closest Underground stations are Oxford Circus (Bakerloo, Victoria and Central lines), located approximately 0.2 miles from the property and Bond Street (Central and Jubilee lines), located approximately 0.3 miles from the property.

About this property

A superb, beautifully appointed one bedroom apartment situated in the heart of Mayfair. This bright, contemporary apartment comprises a spacious open-plan kitchen/reception room, one bedroom and one bathroom. The property is situated on the third floor and benefits from lift access.

Tenure

Leasehold (991 years remaining)

Energy Performance

EPC Rating = C

Viewing

All viewings will be accompanied and are strictly by prior arrangement through Savills Mayfair & St James's Office.

Telephone: +44 (0) 20 7578 5100.





Maddox Street, London, W1S
Gross Internal Area 638 sq ft, 59.3 m²

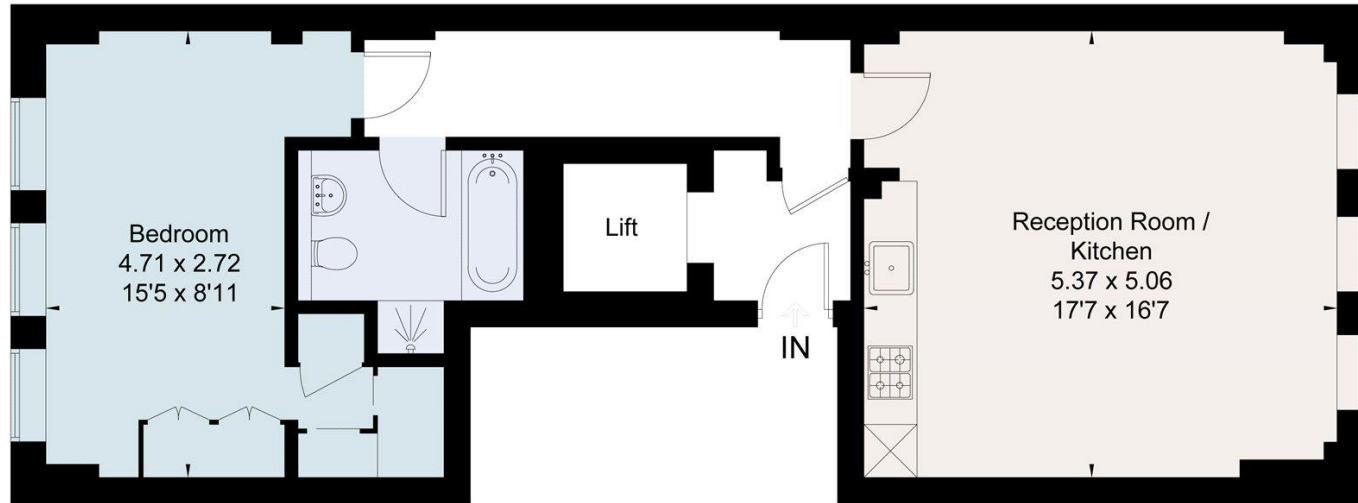


savills

savills.co.uk

Charles Medina
 Mayfair & St James's
+44 (0) 20 7578 5100
 cmedina@savills.com

Approximate Area = 63.2 sq m / 680 sq ft
 (Including Lift)
 For identification only. Not to scale.
 © Fourwalls



Third Floor

Surveyed and drawn in accordance with the International Property Measurement Standards (IPMS 2: Residential)
 fourwalls-group.com 263355

| Energy Efficiency Rating | | Current | Potential |
|---|----------|-------------------------|-----------|
| Very energy efficient - lower running costs | | | |
| (92-) | A | | |
| (81-91) | B | | |
| (69-80) | C | | |
| (55-68) | D | | |
| (39-54) | E | | |
| (21-38) | F | | |
| (1-20) | G | | |
| Not energy efficient - higher running costs | | | |
| England, Scotland & Wales | | 71 | 75 |
| | | EU Directive 2002/91/EC | |

Important Notice Savills, its clients and any joint agents give notice that 1: They are not authorised to make or give any representations or warranties in relation to the property either here or elsewhere, either on their own behalf or on behalf of their client or otherwise. They assume no responsibility for any statement that may be made in these particulars. These particulars do not form part of any offer or contract and must not be relied upon as statements or representations of fact. 2: Any areas, measurements or distances are approximate. The text, photographs and plans are for guidance only and are not necessarily comprehensive. It should not be assumed that the property has all necessary planning, building regulation or other consents and Savills have not tested any services, equipment or facilities. Purchasers must satisfy themselves by inspection or otherwise. 20200903ALST

