



A bright and spacious 4 bedroom apartment

Sussex Square, Paddington, London, W2

£1,600,000 Leasehold



Entrance Hall • reception room
 • dining room • kitchen • master bedroom with en suite bathroom
 • 3 further bedrooms (1 en suite shower room)
 • Approx. 1,552 sq ft • EPC: G

Description

A recently refurbished, lateral apartment with charming views of Sussex Square on the raised ground floor of a modern, purpose built block which benefits from a porter.

Local Information

Sussex Square is situated on the Hyde Park Estate and has a pretty communal garden in the square for residents.

There is an excellent range of local amenities on Connaught Street (0.4 mile) including restaurants, coffee shops and a delicatessen.

Hyde Park is nearby (0.2 mile) and the closest underground stations are Lancaster Gate (0.2 mile) and Paddington station (0.3 mile). Please note all distances are approximate.

Tenure

Leasehold, Approximately 39 years remain

Local Authority

City Of Westminster

Energy Performance

EPC Rating = G

Viewing

All viewings will be accompanied and are strictly by prior arrangement through Savills Mayfair & St James's Office.

Telephone: +44 (0) 20 7578 5100.



savills

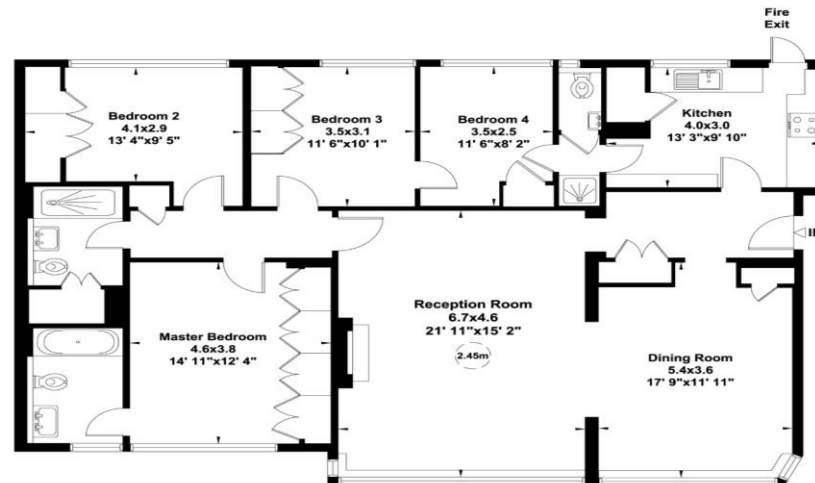
savills.co.uk

Charles Medina
 Mayfair & St James's
 +44 (0) 20 7578 5100
 cmedina@savills.com

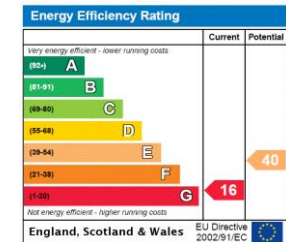
Sussex Square, W2

Gross internal area (approx.)
 144 Sq m (1552 Sq ft)
 For identification only, Not to Scale

capital 020 8871 7722



Ground Floor



Not to scale, for guidance only and must not be relied upon as a statement of fact. All measurements and areas are approximate only (and have been prepared in accordance with the current edition of the RICS Code of Measuring Practice).

Important notice Savills, its clients and any joint agents give notice that 1: They are not authorised to make or give any representations or warranties in relation to the property either here or elsewhere, either on their own behalf or on behalf of their client or otherwise. They assume no responsibility for any statement that may be made in these particulars. These particulars do not form part of any offer or contract and must not be relied upon as statements or representations of fact. 2: Any areas, measurements or distances are approximate. The text, photographs and plans are for guidance only and are not necessarily comprehensive. It should not be assumed that the property has all necessary planning, building regulation or other consents and Savills have not tested any services, equipment or facilities. Purchasers must satisfy themselves by inspection or otherwise. 20200204KABL

