



A luxurious three double bedroom, three bathroom apartment

Eaton House, 39-40 Upper Grosvenor Street, Grosvenor Square, Mayfair, London, W1K

£1,750 pw (£7,583.33 pcm) plus fees apply, Furnished, Part Furnished, Unfurnished
Available from 29.02.2020



Second floor • High specifications fixtures and fittings • Solid wood and stone floors • Three bedrooms • 24 hour Concierge • Lift

Local Information

Grosvenor Square is a prestigious garden square located to the east of Hyde Park and to the north of Piccadilly. The property is within reach of the many amenities, restaurants and flagship designer stores offered by Mount Street, New Bond Street and their surrounding areas. The closest Underground stations are Bond Street (Central and Jubilee lines), and Marble Arch (Central line) both located 0.4 miles from the property.

About this property

A luxurious three double bedroom, three bathroom apartment with concierge on Grosvenor Square, available if required for immediate occupation and fully furnished. Solid wood and stone floors throughout.

Furnishing

Furnished, Part Furnished, Unfurnished

Local Authority

City Of Westminster

Energy Performance

EPC Rating = C

Viewing

All viewings will be accompanied and are strictly by prior arrangement through Savills Mayfair & St James's Lettings Office.
Telephone: +44 (0) 20 7578 5101.





Eaton House, 39-40 Upper Grosvenor Street, Grosvenor Square, Mayfair, London, W1K
Gross Internal Area 1255 sq ft, 116.6 m²

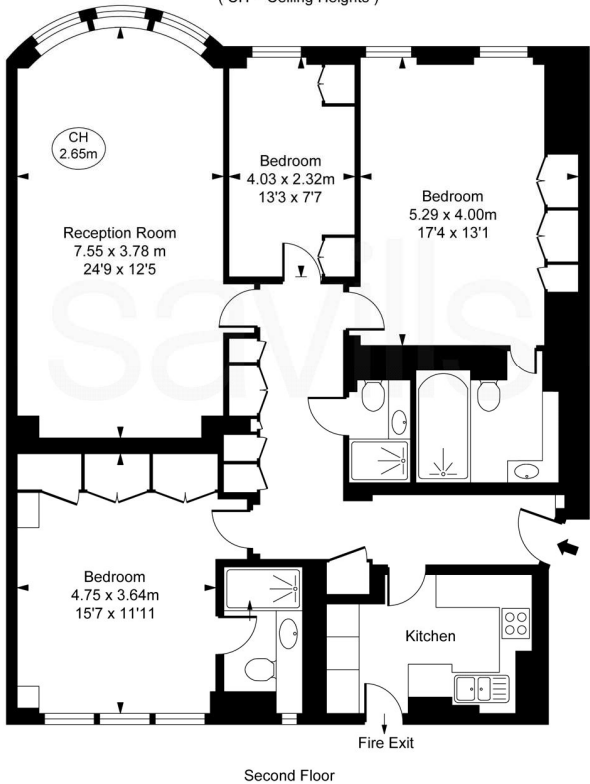
Lucy Beaty
Mayfair & St James's Lettings
+44 (0) 20 7578 5101
lucy.beaty@savills.com



savills

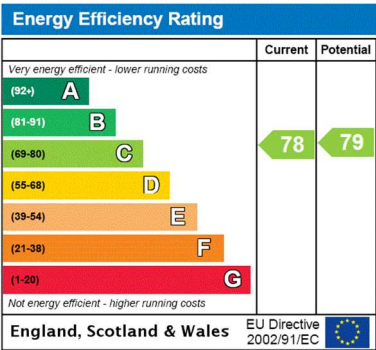
savills.co.uk

Eaton House,
Upper Grosvenor Street, W1K
Approximate Gross Internal Area
118.66 sq m / 1,277 sq ft
(CH = Ceiling Heights)



Second Floor

This plan is not to scale. It is for guidance and not for valuation purposes.
All measurements and areas are approximate only, and have been prepared in accordance with the current edition of the RICS Code of Measuring Practice.
© Fulham Performance



Important notice Savills, their clients and any joint agents give notice that: 1. They are not authorised to make or give any representations or warranties in relation to the property either here or elsewhere, either on their own behalf or on behalf of their client or otherwise. They assume no responsibility for any statement that may be made in these particulars. These particulars do not form part of any offer or contract and must not be relied upon as statements or representations of fact. 2. Any areas, measurements or distances are approximate. The text, images and plans are for guidance only and are not necessarily comprehensive. It should not be assumed that the property has all necessary planning, building regulation or other consents and Savills have not tested any services, equipment or facilities. Prospective tenants must satisfy themselves by inspection or otherwise. Please note that the local area may be affected by aircraft noise, you should make your own enquiries regarding any noise within the area before you make any offer.

*There are different rules and fees for different tenancy types. For details of our fees and charges to go to Savills.co.uk/tenant-fees. For more detailed information read our applicant guide at savills.co.uk/applicant-guide. Hard copy available on request. . 20200211YNMK

