



# A beautifully finished open plan apartment

**Park Street, Mayfair, London, W1K**

£695 pw (£3,011.67 pcm) plus fees apply, Furnished, Part Furnished  
Available from 15.11.2019



Double bedroom • Bathroom • Open plan kitchen/reception room • Fourth floor (no lift) • Council Tax=F • EPC=D

### Local Information

Park Street is located to the east of Hyde Park. The property is within reach of the many amenities, restaurants and flagship designer stores offered by Mount Street, Bond Street and Oxford Street and their surrounding areas. The closest Underground stations are Bond Street (Jubilee and Central lines), located 0.3 miles from the property and Marble Arch (Central line), located 0.3 miles from the property.

### About this property

A beautifully finished apartment with open plan bright living space set in this period building on a desirable Mayfair street.

### Furnishing

Furnished, Part Furnished

### Local Authority

Westminster

### Energy Performance

EPC Rating = D

### Viewing

All viewings will be accompanied and are strictly by prior arrangement through Savills Mayfair & St James's Lettings Office.

Telephone: +44 (0) 20 7578 5101.







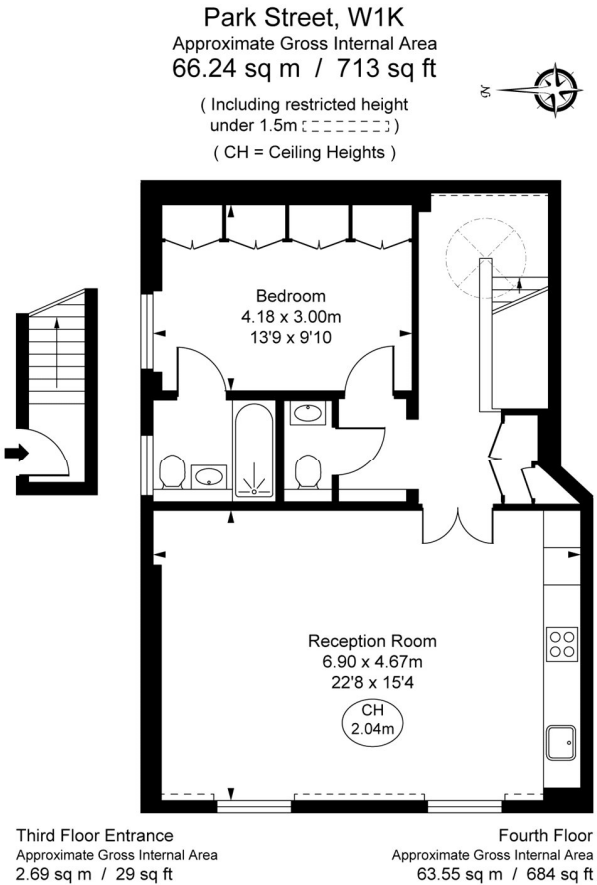
Park Street, Mayfair, London, W1K  
Gross Internal Area 712 sq ft, 66.1 m²

Dean Elgafar  
Mayfair & St James's Lettings  
+44 (0) 20 7578 5101  
dean.elgafar@savills.com

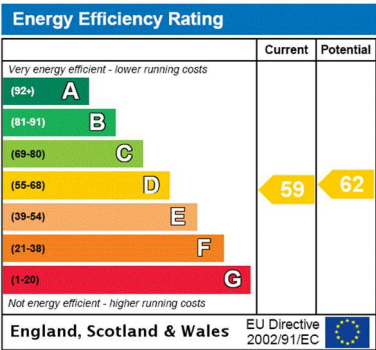


savills

savills.co.uk



This plan is not to scale. It is for guidance and not for valuation purposes.  
All measurements and areas are approximate only, and have been prepared in accordance with the current edition of the RICS Code of Measuring Practice.  
© Fulham Performance



**Important notice** Savills, their clients and any joint agents give notice that: 1. They are not authorised to make or give any representations or warranties in relation to the property either here or elsewhere, either on their own behalf or on behalf of their client or otherwise. They assume no responsibility for any statement that may be made in these particulars. These particulars do not form part of any offer or contract and must not be relied upon as statements or representations of fact. 2. Any areas, measurements or distances are approximate. The text, images and plans are for guidance only and are not necessarily comprehensive. It should not be assumed that the property has all necessary planning, building regulation or other consents and Savills have not tested any services, equipment or facilities. Prospective tenants must satisfy themselves by inspection or otherwise. Please note that the local area may be affected by aircraft noise, you should make your own enquiries regarding any noise within the area before you make any offer.

\*There are different rules and fees for different tenancy types. For details of our fees and charges to go to Savills.co.uk/tenant-fees. For more detailed information read our applicant guide at savills.co.uk/applicant-guide. Hard copy available on request. . 20191115YNMK

