



## A beautifully furnished three bedroom apartment with views over Hyde Park.

**Hyde Park Square, London, W2**

£1,100 pw (£4,766.67 pcm) plus fees apply, Furnished, Part Furnished  
Available from NOW

**savills**

• High specification • Air  
Conditioned • Balcony with garden  
views • Three bedrooms and  
bathrooms • 24 hour concierge

#### **Local Information**

Located in a well maintained building located to the north of Hyde Park. The property is within reach of the many amenities, restaurants and shops offered by Connaught Street. The closest Underground stations are Marble Arch (Central line) and Lancaster Gate (Central line).

#### **About this property**

A luxurious three bedroom, three bathroom apartment on the fifth floor with views over Hyde Park Square. This well presented property benefits from air conditioning, balcony, floor to ceiling windows, marble work tops and solid wood floors to common areas.

#### **Furnishing**

Furnished, Part  
Furnished

#### **Local Authority**

Westminster City  
Council, Bi-Borough  
Shared Legal Services  
Council Tax Band = G

#### **Energy Performance**

EPC Rating = C

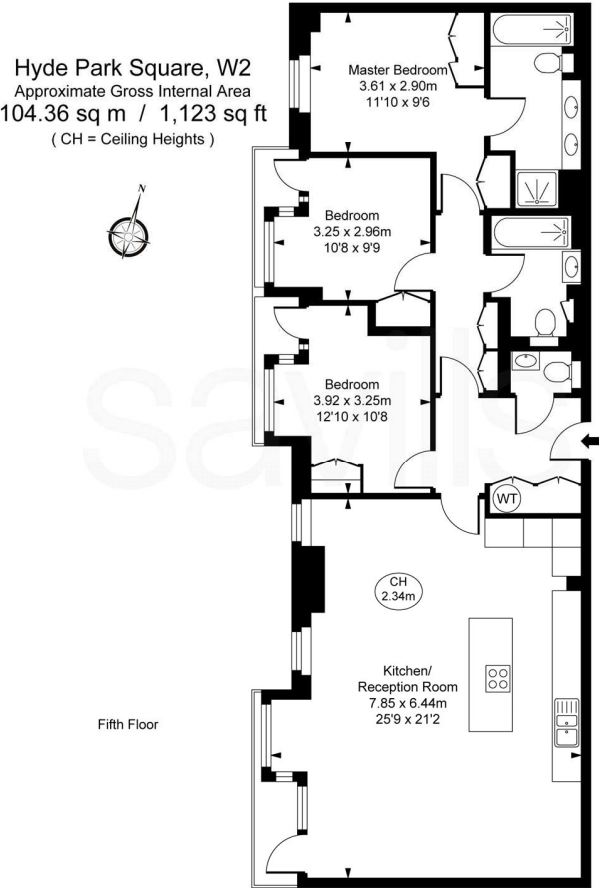
#### **Viewing**

All viewings will be accompanied and are strictly by prior arrangement through Savills Mayfair & St James's Lettings Office. Telephone: +44 (0) 20 7578 5101.





Hyde Park Square, London, W2  
Gross Internal Area 1123 sq ft, 104.3 m²



This plan is not to scale. It is for guidance and not for valuation purposes.  
All measurements and areas are approximate only, and have been prepared in accordance with the current edition of the RICS Code of Measuring Practice.  
© Fulham Performance

Energy Efficiency Rating		
	Current	Potential
Very energy efficient - lower running costs		
(92+) A		
(81-91) B		
(69-80) C	77	78
(55-68) D		
(39-54) E		
(21-38) F		
(1-20) G		
Not energy efficient - higher running costs		
England, Scotland & Wales		
EU Directive 2002/91/EC		

**Important notice** Savills, their clients and any joint agents give notice that: 1. They are not authorised to make or give any representations or warranties in relation to the property either here or elsewhere, either on their own behalf or on behalf of their client or otherwise. They assume no responsibility for any statement that may be made in these particulars. These particulars do not form part of any offer or contract and must not be relied upon as statements or representations of fact. 2. Any areas, measurements or distances are approximate. The text, images and plans are for guidance only and are not necessarily comprehensive. It should not be assumed that the property has all necessary planning, building regulation or other consents and Savills have not tested any services, equipment or facilities. Prospective tenants must satisfy themselves by inspection or otherwise. Please note that the local area may be affected by aircraft noise, you should make your own enquiries regarding any noise within the area before you make any offer.

\*There are different rules and fees for different tenancy types. For details of our fees and charges please go to Savills.co.uk/tenant-fees. For more detailed information read our applicant guide at savills.co.uk/applicant-guide.  
Hard copy available on request. . 20210115HLMC

