



Contemporary 2 bedroom apartment on the third floor of a modern building with a lift located on a quiet mews just off the world famous Bond Street. Solid wood and stone floors throughout.

Bloomfield Court, Bourdon Street, London, W1K

£650 pw (£2,816.67 pcm) plus fees apply, Furnished
Available from 31.01.2020



**VIDEO TOUR AVAILABLE UPON REQUEST
FOR REMOTE VIEWING • Dual aspect living
room • Wood and stone flooring throughout •
Granite work tops in the kitchen • Lift • Located
on quiet street • Approximately 656 sq ft**

Local Information

The property is located in a modern building at the end of Bourdon Street approximately 0.5 miles from Green Park, 0.3 miles from Bond Street and 0.8 miles from Oxford Street underground station. The flat is situated adjacently to Bond Street and horizontally to Berkeley Square with easy access to underground stations, shops and all the amenities Mayfair has to offer.

Telephone: +44 (0) 20 7578 5101.

About this property

A wonderful modern furnished two bedroom apartment of circa 656 sq. ft. with wood and stone flooring throughout. The apartment comprises a dual aspect living room, separate kitchen with granite work tops and Bosch appliances, ample storage, a bathroom and additional shower room.

Furnishing

Furnished

Local Authority

City Of Westminster
Council Tax Band = H

Energy Performance

EPC Rating = E

Viewing


All viewings will be accompanied and are strictly by prior arrangement through Savills Mayfair & St James's Lettings Office.





Bloomfield Court, Bourdon Street, London, W1K
Gross Internal Area 656 sq ft, 60.9 m²

onTheMarket.com

savills

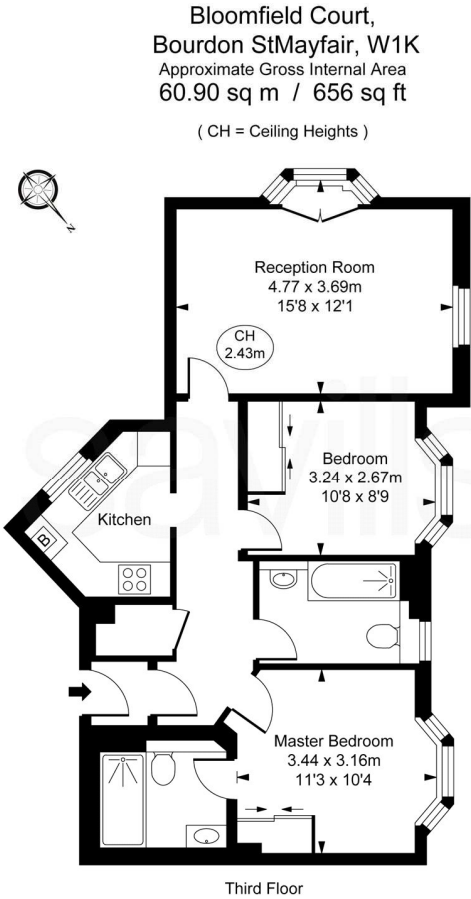
savills.co.uk

Lucy Beaty

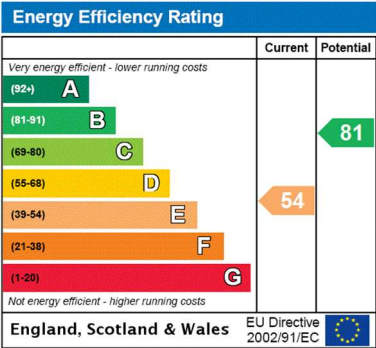
Mayfair & St James's Lettings

+44 (0) 20 7578 5101

lucy.beaty@savills.com



This plan is not to scale. It is for guidance and not for valuation purposes.
All measurements and areas are approximate only, and have been prepared in accordance with the current edition of the RICS Code of Measuring Practice.
© Fulham Performance



Important notice Savills, their clients and any joint agents give notice that: 1. They are not authorised to make or give any representations or warranties in relation to the property either here or elsewhere, either on their own behalf or on behalf of their client or otherwise. They assume no responsibility for any statement that may be made in these particulars. These particulars do not form part of any offer or contract and must not be relied upon as statements or representations of fact. 2. Any areas, measurements or distances are approximate. The text, images and plans are for guidance only and are not necessarily comprehensive. It should not be assumed that the property has all necessary planning, building regulation or other consents and Savills have not tested any services, equipment or facilities. Prospective tenants must satisfy themselves by inspection or otherwise. Please note that the local area may be affected by aircraft noise, you should make your own enquiries regarding any noise within the area before you make any offer.

*There are different rules and fees for different tenancy types. For details of our fees and charges please go to Savills.co.uk/tenant-fees. For more detailed information read our applicant guide at savills.co.uk/applicant-guide.
Hard copy available on request. . 20200728FLWT



arla | propertymark

PROTECTED