



# Luxurious 1324 square foot corner duplex apartment

**Green Street, Mayfair, London, W1K**

£1,500 pw (£6,500 pcm) plus fees apply, Furnished, Part Furnished  
Available from 06.01.2020



1324 square feet • Air Conditioning • 2 bedrooms • Reception room • 2 bathrooms • Courtyard

#### Local Information

Green Street is located to the east of Hyde Park off Park Lane. The property is within reach of the many amenities, restaurants and shops offered by Oxford Street, South Audley Street and their surrounding areas. The closest Underground stations are Marble Arch (Central line), located 0.2 miles from the property and Bond Street (Central and Jubilee lines), located 0.3 miles from the property.

#### About this property

1324 square foot corner duplex apartment, refurbished to highest specification with solid floors and AC.

#### Furnishing

Furnished, Part Furnished

#### Local Authority

City Of Westminster

#### Energy Performance

EPC Rating = D

#### Viewing

All viewings will be accompanied and are strictly by prior arrangement through Savills Mayfair & St James's Lettings Office.

Telephone: +44 (0) 20 7578 5101.





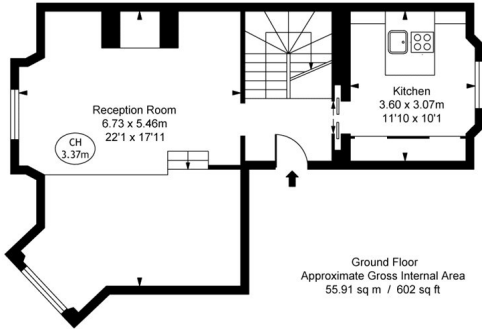


Green Street, Mayfair, London, W1K  
Gross Internal Area 1324 sq ft, 123 m²

Thomas Sutton  
Mayfair & St James's Lettings  
+44 (0) 20 7578 5101  
tsutton@savills.com

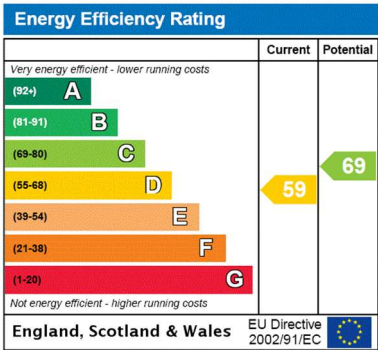


Lower Ground Floor  
Approximate Gross Internal Area  
68.41 sq m / 736 sq ft



Ground Floor  
Approximate Gross Internal Area  
55.91 sq m / 602 sq ft

ILLUSTRATION FOR IDENTIFICATION PURPOSES ONLY  
ALL MEASUREMENTS ARE MAXIMUM, AND INCLUDE WINDOW BAYS AND WARDROBES WHERE APPLICABLE  
THIS PLAN MUST NOT BE REPRODUCED BY ANY OTHER PERSON WITHOUT PERMISSION



**Important notice** Savills, their clients and any joint agents give notice that: 1. They are not authorised to make or give any representations or warranties in relation to the property either here or elsewhere, either on their own behalf or on behalf of their client or otherwise. They assume no responsibility for any statement that may be made in these particulars. These particulars do not form part of any offer or contract and must not be relied upon as statements or representations of fact. 2. Any areas, measurements or distances are approximate. The text, images and plans are for guidance only and are not necessarily comprehensive. It should not be assumed that the property has all necessary planning, building regulation or other consents and Savills have not tested any services, equipment or facilities. Prospective tenants must satisfy themselves by inspection or otherwise. Please note that the local area may be affected by aircraft noise, you should make your own enquiries regarding any noise within the area before you make any offer.

\*There are different rules and fees for different tenancy types. For details of our fees and charges go to Savills.co.uk/tenant-fees. For more detailed information read our applicant guide at savills.co.uk/applicant-guide. Hard copy available on request. . 20191024YNMK

