



A beautifully presented two bedroom apartment in a well-maintained building with porter.

Savoy Apartments, 6 Savoy Court, London, WC2R

£1,150 pw (£4,983.33 pcm) plus fees apply, Furnished
Available from NOW



- Two double bedrooms • Principle bedroom with en-suite • Spacious reception room
- Separate modern kitchen • Excellent condition throughout

Local Information

Located in an fantastic position adjacent to the Savoy Hotel and conveniently located less than 0.1 miles from Covent Garden and 0.4 miles from Trafalgar Square this charming flat is well placed to enjoy many of London's amenities. 0.3 miles away from Charing Cross and Embankment tube station.

About this property

This modern lateral apartment benefits from a spacious reception room with dining area and seperate fully integrated modern kitchen, a large principle bedroom with en-suite shower room and a further double bedroom and bathroom, both bedrooms benefits from ample built-in storage. The property is located in a well-maintained building with porter and directly opposite the world famous Savoy Theatre.

Furnishing

Furnished

Local Authority

Westminster City Council, Bi-Borough Shared Legal Services Council Tax Band = H

Energy Performance

EPC Rating = C

Viewing

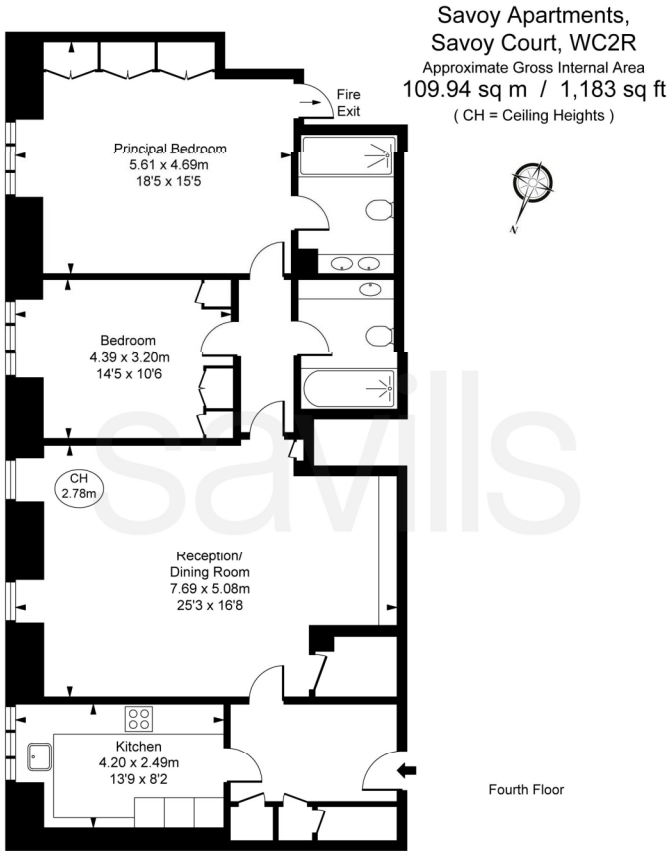
All viewings will be accompanied and are strictly by prior arrangement through Savills Mayfair & St James's Lettings Office. Telephone: +44 (0) 20 7578 5101.



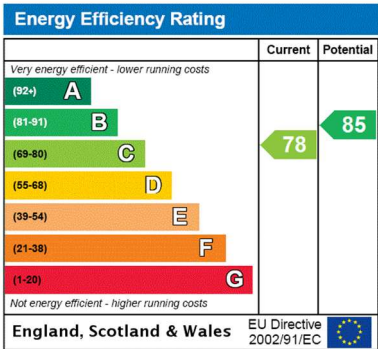


Savoy Apartments, 6 Savoy Court, London, WC2R
Gross Internal Area 1169 sq ft, 108.6 m²

Alex Hewitt
Mayfair & St James's Lettings
+44 (0) 20 7578 5101
ahewitt@savills.com



This plan is not to scale. It is for guidance and not for valuation purposes.
All measurements and areas are approximate only, and have been prepared in accordance with the current edition of the RICS Code of Measuring Practice.
© Fulham Performance



Important notice Savills, their clients and any joint agents give notice that: 1. They are not authorised to make or give any representations or warranties in relation to the property either here or elsewhere, either on their own behalf or on behalf of their client or otherwise. They assume no responsibility for any statement that may be made in these particulars. These particulars do not form part of any offer or contract and must not be relied upon as statements or representations of fact. 2. Any areas, measurements or distances are approximate. The text, images and plans are for guidance only and are not necessarily comprehensive. It should not be assumed that the property has all necessary planning, building regulation or other consents and Savills have not tested any services, equipment or facilities. Prospective tenants must satisfy themselves by inspection or otherwise. Please note that the local area may be affected by aircraft noise, you should make your own enquiries regarding any noise within the area before you make any offer.

*There are different rules and fees for different tenancy types. For details of our fees and charges please go to Savills.co.uk/tenant-fees. For more detailed information read our applicant guide at savills.co.uk/applicant-guide.
Hard copy available on request. . 20201217HLMC

