



A spacious conveniently located apartment

4 Romney Court, Newtown Court, Marlow, Buckinghamshire SL7 1UY

Leasehold



Well presented and spacious accommodation

- Situated in a convenient location
- Two double bedrooms
- Pleasant outlook to communal gardens
- Allocated parking
- Long lease of 950 years +

Local information

Marlow town offers a superb range of retailers, with an eclectic mix of local independent and national retailers. There are numerous bars, cafes and restaurants dotted around the town

About this property

A private front door opens into a spacious reception room with large rear facing window overlooking the secluded communal lawns. The hallway features a handy storage cupboard and provides access to two double bedrooms one enjoying the same pleasant outlook with another enjoying a south facing aspect.

A well appointed kitchen is modern with fitted units and some integrated appliances. The bathroom is a good size and neutral in design.

Tenure

Leasehold

Local Authority

Wycombe Council

EPC rating = C

Viewing

Strictly by appointment with Savills

4 Romney Court, Newtown Court, Marlow, Buckinghamshire SL7 1UY



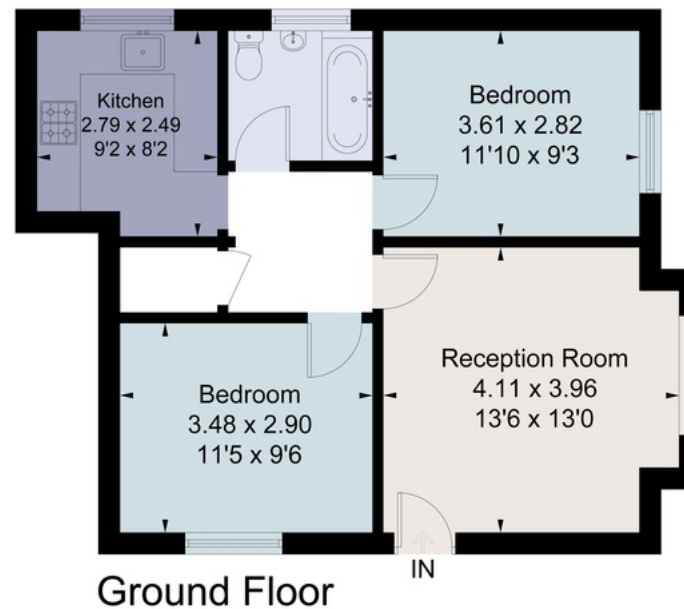
savills.co.uk

Alex Reid

Savills Marlow

alex.reid@savills.com

Approximate Floor Area = 54.35 sq m / 585 sq ft



Drawn for illustration and identification purposes only by fourwalls-group.com 262301

Energy Efficiency Rating		
	Current	Potential
Very energy efficient - lower running costs		
(92-100) A		
(81-91) B		
(69-80) C	75	76
(55-68) D		
(39-54) E		
(21-38) F		
(1-20) G		
Not energy efficient - higher running costs		
England, Scotland & Wales		
	EU Directive 2002/91/EC	

Important notice: Savills, their clients and any joint agents give notice that 1: They are not authorised to make or give any representations or warranties in relation to the property either here or elsewhere, either on their own behalf or on behalf of their client or otherwise. They assume no responsibility for any statement that may be made in these particulars. These particulars do not form part of any offer or contract and must not be relied upon as statements or representations of fact. 2: Any areas, measurements or distances are approximate. The text, photographs and plans are for guidance only and are not necessarily comprehensive. It should not be assumed that the property has all necessary planning, building regulation or other consents and Savills have not tested any services, equipment or facilities. Purchasers must satisfy themselves by inspection or otherwise. 02028072 Job ID: 145285 User Initials: HH

