



A well-appointed house with a balcony, on a private, gated mews.

Park Crescent Mews East, London, W1W

Guide price £2,950,000 Leasehold

savills

A well-appointed house with a balcony, on a private, gated mews.

Gated mews • Integral garage • Newly installed kitchen • Balcony • Four bedrooms

Local Information

Park Crescent Mews East is located at the northern end of Portland Place close to Regent's Park. The boutique shops and restaurants of Marylebone High Street lie to the west with the world renowned shopping of Oxford Street to the south. Situated in the heart of Marylebone and just moments from Marylebone High Street, Oxford Street and Mayfair.

Nearby transport links include Regent's Park and Great Portland Street underground stations, Marylebone, Euston and King's Cross St Pancras train stations, and access to the West and Heathrow via the A40.

About this property

A beautiful mews house situated in an exclusive, gated mews. The property has an abundance of natural light throughout, and benefits from four bedrooms, two bathrooms and WC, TV room, separate kitchen and reception room with a balcony leading from it. There is an integral garage, and significant loft storage.

Tenure

Leasehold

Local Authority

Westminster City Council

Energy Performance

EPC Rating = C

Viewing

All viewings will be accompanied and are strictly by prior arrangement through Savills Marylebone & Fitzrovia Office. Telephone: +44 (0) 20 3527 0400.





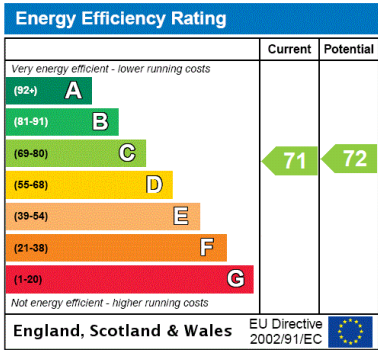
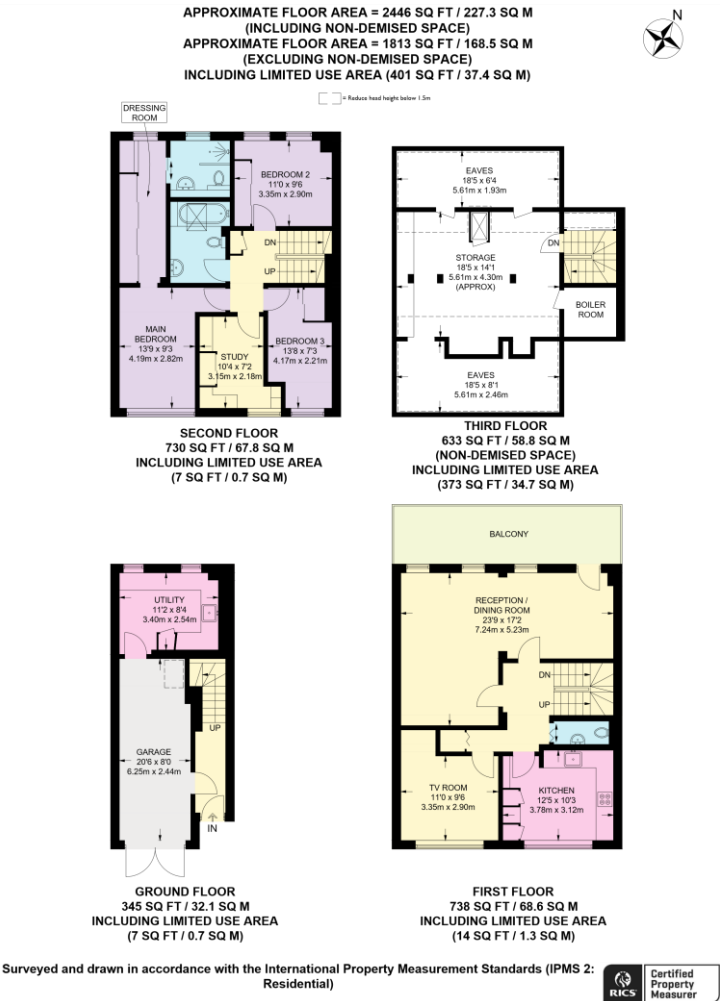
Park Crescent Mews East, London, W1W
Gross Internal Area (including non-demised space) 2446 sq ft, 227.3 m²



savills

savills.co.uk

George Pratt
Marylebone & Fitzrovia
+44 (0) 20 3527 0400
george.pratt@savills.com



Important Notice Savills, its clients and any joint agents give notice that 1: They are not authorised to make or give any representations or warranties in relation to the property either here or elsewhere, either on their own behalf or on behalf of their client or otherwise. They assume no responsibility for any statement that may be made in these particulars. These particulars do not form part of any offer or contract and must not be relied upon as statements or representations of fact. 2: Any areas, measurements or distances are approximate. The text, photographs and plans are for guidance only and are not necessarily comprehensive. It should not be assumed that the property has all necessary planning, building regulation or other consents and Savills have not tested any services, equipment or facilities. Purchasers must satisfy themselves by inspection or otherwise. 20201117JTKS

