



A spectacular two bedroom apartment situated on the sixth floor with a lift located within the grounds of newly rebuilt Regents Crescent.

Park Crescent, W1B

£1,495,000 Leasehold (135 years remaining)



A spectacular two bedroom apartment situated on the sixth floor with a lift located within the grounds of newly rebuilt Regents Crescent.

Two Bedrooms • Reception Room with Dining Room Area • Modern Kitchen • Shower-room • Lift • Service Charge approximately £7,876 per annum • Ground Rent approximately £200

Local Information

Park Crescent is located at the northern end of Portland Place close to Regent's Park. The boutique shops and restaurants of Marylebone High Street lie to the west with the world renowned shopping of Oxford Street to the south. Situated in the heart of Marylebone and just moments from Marylebone High Street, Oxford Street and Mayfair.

Nearby transport links include Regent's Park and Great Portland Street underground stations, Marylebone and Euston train stations, and access to the West and Heathrow via the A40.

About this property

A spectacular two bedroom apartment situated on the sixth floor of a highly sought after building. With access to exclusive key-entry private rear gardens within Regent's Park.

The apartment consists of a spacious reception room with a dining area creating a perfect space for entertaining, a modern kitchen, two bedrooms and bathroom.

This building further benefits from a lift and 24 hour concierge and security services.

Tenure

Leasehold (135 years remaining)

Local Authority

Westminster

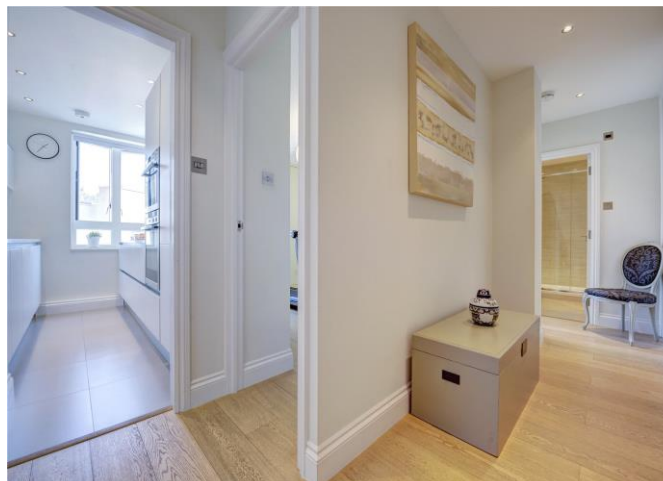
Energy Performance

EPC Rating = C

Viewing

All viewings will be accompanied and are strictly by prior arrangement through Savills Marylebone & Fitzrovia Office.

Telephone: +44 (0) 20 3527 0400.

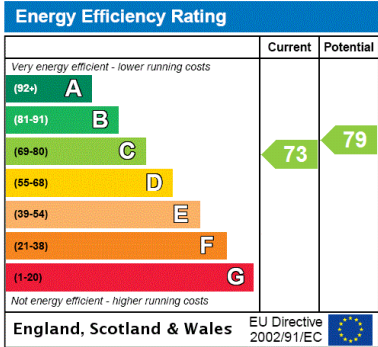
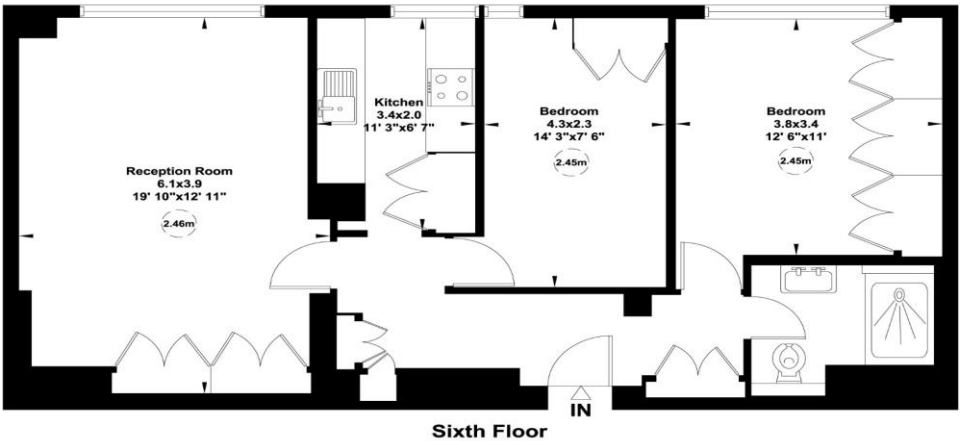




5, 22 Park Crescent, W1

Gross internal area (approx.)
69 Sq m (738 Sq ft)
For identification only, Not to Scale

capital 020 8671 7722



Important Notice Savills, its clients and any joint agents give notice that 1: They are not authorised to make or give any representations or warranties in relation to the property either here or elsewhere, either on their own behalf or on behalf of their client or otherwise. They assume no responsibility for any statement that may be made in these particulars. These particulars do not form part of any offer or contract and must not be relied upon as statements or representations of fact. 2: Any areas, measurements or distances are approximate. The text, photographs and plans are for guidance only and are not necessarily comprehensive. It should not be assumed that the property has all necessary planning, building regulation or other consents and Savills have not tested any services, equipment or facilities. Purchasers must satisfy themselves by inspection or otherwise. 20200923LRTR

