



A stunning four bedroom apartment located in one of Marylebone's most popular red brick mansion blocks benefiting from a lift and 24 hour uniformed porters and impressive lobby.

Bryanston Court, George Street, Marylebone, London, W1H

Guide price £3,350,000, Share of Freehold

savills

4 bedrooms • 2 bright reception rooms • 2 bathrooms
• 24 hour porter • Lift • Separate storage room (available
under separate negotiation) • Utility room • Service
charge approximately £11,500 per annum • EPC = C

Local Information

Bryanston Court is superbly located for the world class amenities of Marylebone and the West End together with the greenery of Hyde Park. The transport links are excellent from neighbouring Marble Arch, Bond Street and Edgware Road underground stations, Marylebone and Paddington train stations, and access to the West and Heathrow via the A40

About this property

Located on the fourth floor this lateral, architecturally developed and beautifully presented apartment boasts ample living space including two reception rooms, one with a wonderful bay window both allowing for plenty of natural light, kitchen, principal bedroom with ample storage, three further bedrooms all benefiting from built-in storage, two bathrooms, guest cloakroom and a utility room.

Tenure

Share of Freehold

Local Authority

Westminster City Council

Energy Performance

EPC Rating = C

Viewing

All viewings will be accompanied and are strictly by prior arrangement through Savills Marylebone & Fitzrovia Office.
Telephone: +44 (0) 20 3527 0400





Bryanston Court, George Street, Marylebone, London, W1H
Gross Internal Area 2033 sq ft, 188.9 m²



savills

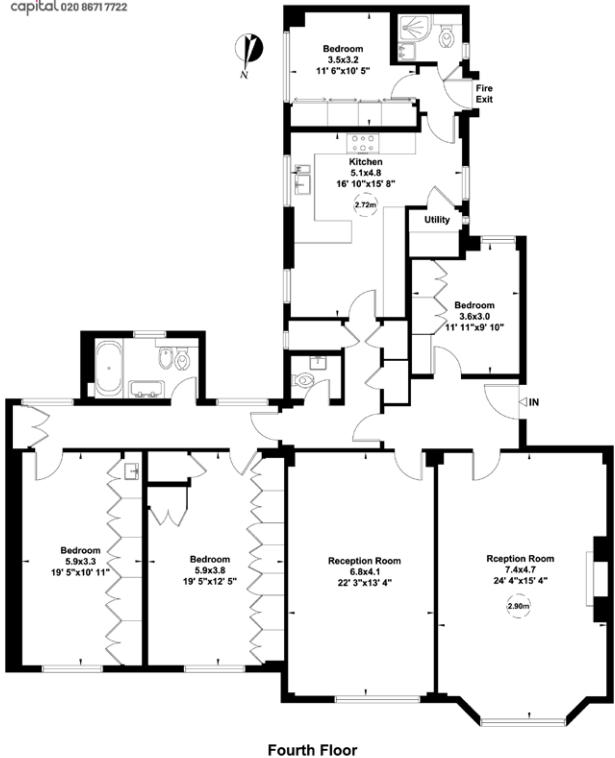
savills.co.uk

Alex Ross
Marylebone & Fitzrovia
+44 (0) 20 3527 0400
ahross@savills.com

Bryanston Court, George Street, W1

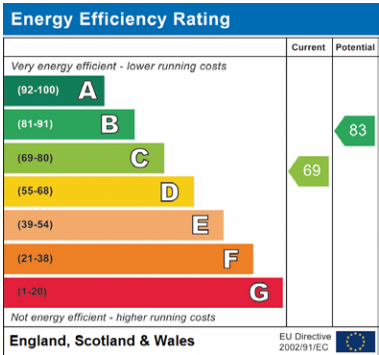
Gross internal area (approx.)
189 Sq m (2033 Sq ft)
For identification only. Not to Scale

capital.020 8671 7722



Not to scale, for guidance only and must not be relied upon as a statement of fact. All measurements and areas are approximate only (and have been prepared in accordance with the current edition of the RICS Code of Measuring Practice).

For identification only. Not to scale. © 20210303JTKS



Important notice Savills, its clients and any joint agents give notice that 1: They are not authorised to make or give any representations or warranties in relation to the property either here or elsewhere, either on their own behalf or on behalf of their client or otherwise. They assume no responsibility for any statement that may be made in these particulars. These particulars do not form part of any offer or contract and must not be relied upon as statements or representations of fact. 2: Any areas, measurements or distances are approximate. The text, photographs and plans are for guidance only and are not necessarily comprehensive. It should not be assumed that the property has all necessary planning, building regulation or other consents and Savills have not tested any services, equipment or facilities. Purchasers must satisfy themselves by inspection or otherwise. Brochure by fourwalls-group.com

