



A SUPERB EIGHT BEDROOM FREEHOLD MEWS HOUSE WITH TWO TERRACES AND A GARAGE

BRYANSTON MEWS WEST, MARYLEBONE, LONDON W1H

Guide Price £5,250,000 - Freehold



A SUPERB EIGHT BEDROOM FREEHOLD MEWS HOUSE WITH TWO TERRACES AND A GARAGE

BRYANSTON MEWS WEST, MARYLEBONE LONDON W1H

Guide Price £5,250,000 - Freehold

Open plan reception/dining room • Kitchen • Utility room • Study • Two bedrooms with en suite bathrooms • Six further bedrooms • Two further shower rooms • Two guest cloakrooms • Two terraces • Garage • EPC Rating = C

Location

Bryanston Mews West is a charming mews located in Marylebone, just moments from sought after schools, the world class amenities of Marylebone High Street and the West End, together with the greenery of Hyde Park and Regent's Park. The transport links are excellent from nearby Marble Arch (0.3 miles), Edgware Road (0.6 miles) and Baker Street (0.6 miles) underground stations, Marylebone (0.5 miles) and Paddington (1 mile) train stations, and access to the West and Heathrow via the A40.

Description

This fabulous eight bedroom home has well-proportioned accommodation set over three floors with a wealth of natural light throughout. The house is beautifully presented with an open plan reception/dining room and kitchen, utility room, study, two en suite bedrooms, six further bedrooms, two further shower rooms and two guest cloakrooms. The house also offers a rear terrace on the first floor, a front terrace on the second floor and has the added benefit of an integral garage.

Energy Performance

A copy of the full Energy Performance Certificate is available on request.

Viewing

Strictly by appointment with Savills.







Bryanston Mews West, W1

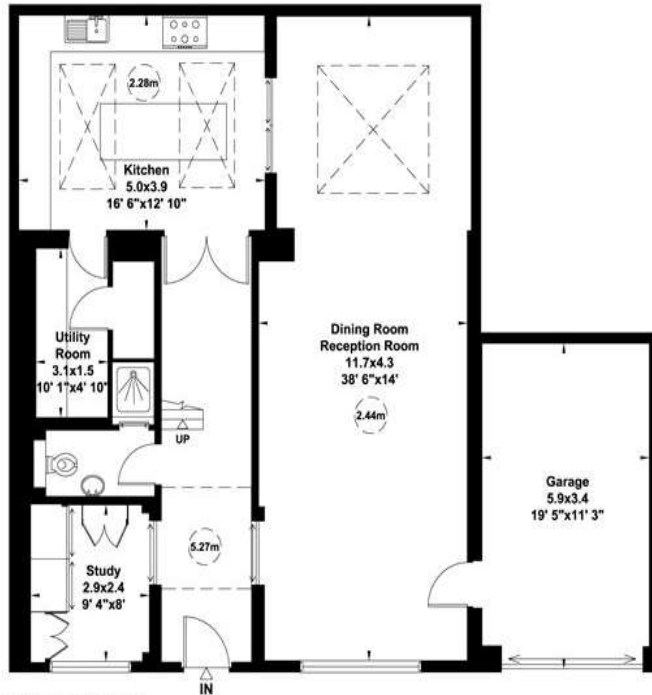
Gross internal area (approx.)

289 Sq m (3108 Sq ft)

Excludes void area approx. 3 Sq m (37 Sq ft)

For identification only, Not to Scale

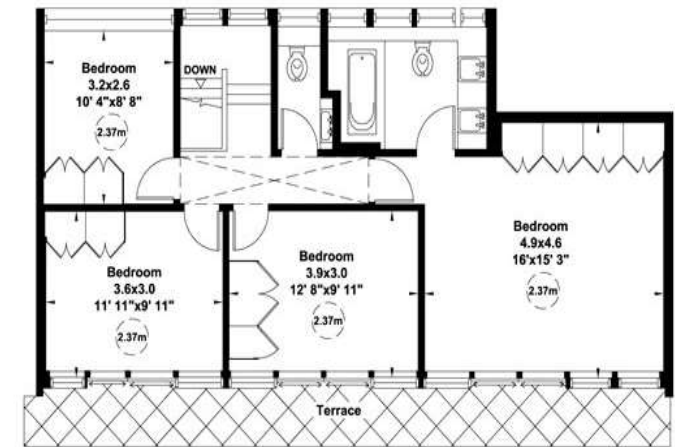
capital 020 8671 7722



Ground Floor



First Floor



Second Floor

Not to scale, for guidance only and must not be relied upon as a statement of fact. All measurements and areas are approximate only (and have been prepared in accordance with the current edition of the RICS Code of Measuring Practice).

Marylebone & Fitzrovia

Alex Ross

ahross@savills.com

+44 (0) 20 3527 0400

savills.co.uk

Important notice: Savills, their clients and any joint agents give notice that:
 1: They are not authorised to make or give any representations or warranties in relation to the property either here or elsewhere, either on their own behalf or on behalf of their client or otherwise. They assume no responsibility for any statement that may be made in these particulars. These particulars do not form part of any offer or contract and must not be relied upon as statements or representations of fact. 2: Any areas, measurements or distances are approximate. The text, photographs and plans are for guidance only and are not necessarily comprehensive. It should not be assumed that the property has all necessary planning, building regulation or other consents and Savills have not tested any services, equipment or facilities. Purchasers must satisfy themselves by inspection or otherwise. 20190429EALU

