



An exceptionally bright and well-proportioned first floor apartment in the heart of Fitzrovia

Cleveland Street, London, W1T

Guide price £599,950, Leasehold approximately 114 years remaining

savills

An exceptionally bright and well-proportioned first floor apartment in the heart of Fitzrovia

Open-plan kitchen/reception room • Bedroom • Bathroom • First floor • Period conversion • Service charge approximately £750.00 pa • Ground rent approximately £300 pa • EPC = E

Local Information

Cleveland Street is situated in the fashionable area of Fitzrovia, with nearby amenities including a wealth of restaurants on Charlotte Street, the world renowned shops on Oxford Street and in the West End, and the greenery of Regent's Park.

The transport links are excellent from nearby Great Portland Street (approximately 0.2 miles), Warren Street (approximately 0.3 miles) and Regent's Park (approximately 0.3 miles) underground stations, Euston (approximately 0.6 miles) and Kings Cross St Pancras (approximately 1.2 miles) train stations and access to the West and Heathrow via the A40.

About this property

This charming one bedroom apartment is situated on the first floor of a period conversion. Beautifully presented and exceptionally bright throughout, the accommodation comprises of an open-plan kitchen/reception room, bedroom and a bathroom. The apartment further features tall windows and an abundance of built-in storage.

Tenure

Leasehold approximately 114 years remaining

Energy Performance

EPC Rating = E

Viewing

All viewings will be accompanied and are strictly by prior arrangement through Savills Marylebone & Fitzrovia Office.

Telephone: +44 (0) 20 3527 0400.





Cleveland Street, London, W1T
Gross Internal Area 358 sq ft, 33.3 m²

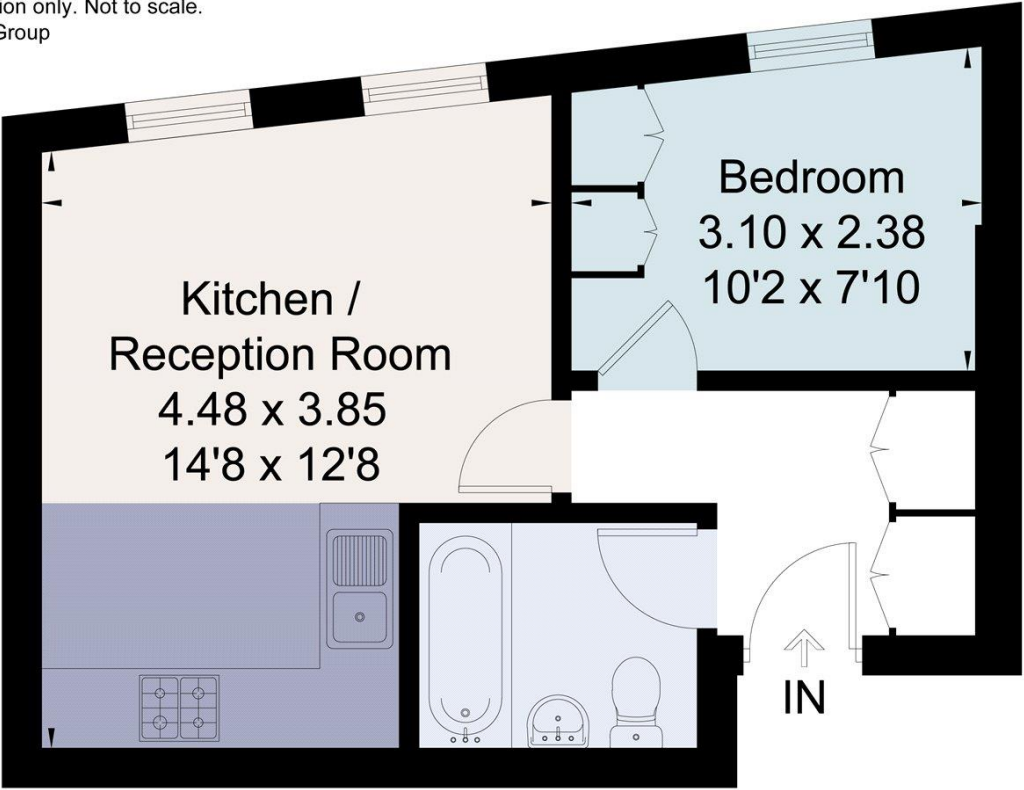
onTheMarket.com

savills

savills.co.uk

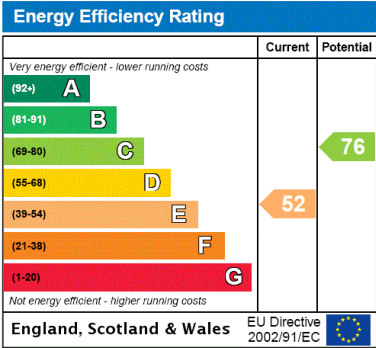
Claire Reynolds
Marylebone & Fitzrovia
+44 (0) 20 3527 0400
creynolds@savills.com

Approximate Area = 33.3 sq m / 358 sq ft
Including Limited Use Area (0.4 sq m / 4 sq ft)
For identification only. Not to scale.
© Fourwalls Group



First Floor

Surveyed and drawn in accordance with the International Property Measurement Standards (IPMS 2: Residential)
fourwalls-group.com 243089



Important notice Savills, its clients and any joint agents give notice that 1: They are not authorised to make or give any representations or warranties in relation to the property either here or elsewhere, either on their own behalf or on behalf of their client or otherwise. They assume no responsibility for any statement that may be made in these particulars. These particulars do not form part of any offer or contract and must not be relied upon as statements or representations of fact. 2: Any areas, measurements or distances are approximate. The text, photographs and plans are for guidance only and are not necessarily comprehensive. It should not be assumed that the property has all necessary planning, building regulation or other consents and Savills have not tested any services, equipment or facilities. Purchasers must satisfy themselves by inspection or otherwise. 20191002HEPS

