



A ground floor two bedroom apartment situated in a Grade II listed building with a 24 hour porter.

Mansfield Street, London, W1G

Guide price £1,995,000 Share of Freehold

savills

**A ground floor two bedroom apartment
situated in a Grade II listed building with
a 24 hour porter**

**Ground floor flat • Two en suite bedrooms •
Reception room • Kitchen • Cloakroom •
Utility room • EPC=D**

About this property

Located within a superb Grade II listed building, this apartment offers generous proportions throughout. Set on the ground floor the apartment comprises two double bedrooms both with en suite bathrooms, reception room, kitchen, cloakroom and utility. The apartment also benefits from a 24 hour porter.

Local Information

Mansfield Street is superbly situated for the world class amenities of Marylebone, Fitzrovia and the West End, together with the greenery of Regent's Park.

The transport links are excellent from nearby Oxford Circus (approximately 0.4 miles), Bond Street (approximately 0.4 miles), Regent's Park (approximately 0.5 miles) and Baker Street (approximately 1.1 miles) underground stations. Euston (approximately 0.8 miles) and King's Cross St Pancras (approximately 1.5 miles) train stations, as well as access to the West and Heathrow via the A40.

Tenure

Share of Freehold

Local Authority

Westminster

Energy Performance

EPC Rating = D

Viewing

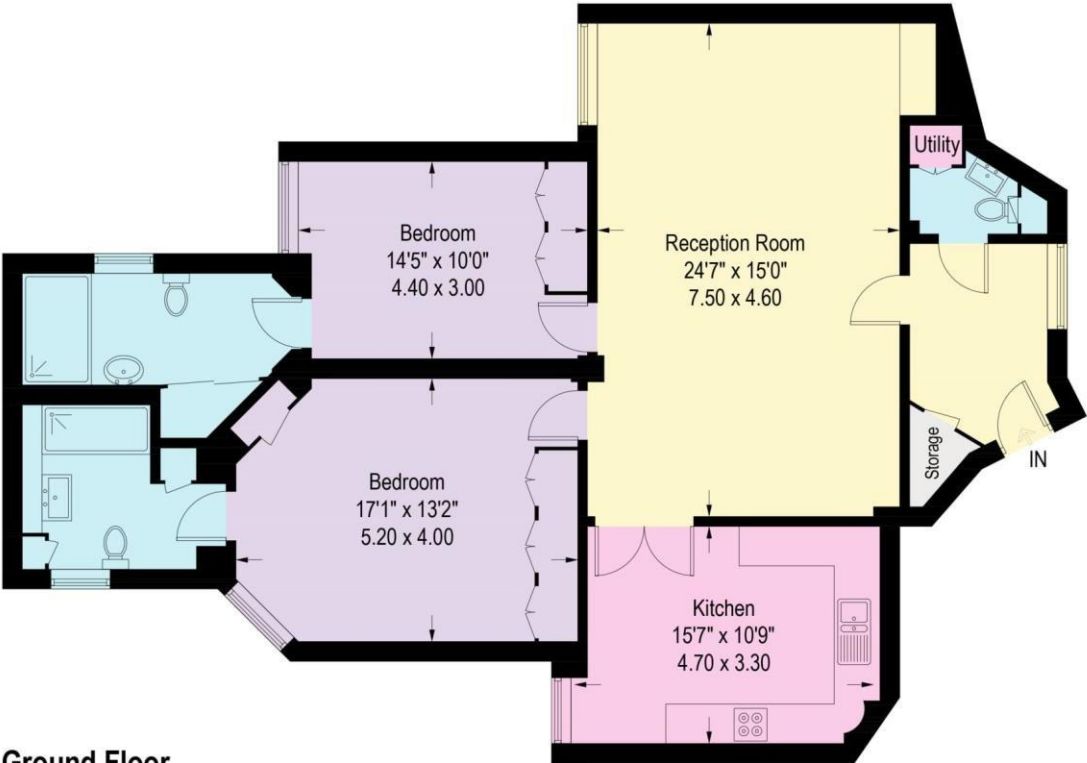
All viewings will be accompanied and are strictly by prior arrangement through Savills Marylebone & Fitzrovia Office. Telephone: +44 (0) 20 3527 0400.





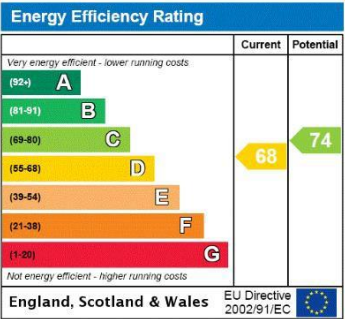
Mansfield Street, W1

Approximate Gross Internal Area = 1224 sq ft / 114 sq m



Ground Floor

Illustration for identification purposes only.
measurements are approximate, not to scale. (ID502912)



Important Notice Savills, its clients and any joint agents give notice that 1: They are not authorised to make or give any representations or warranties in relation to the property either here or elsewhere, either on their own behalf or on behalf of their client or otherwise. They assume no responsibility for any statement that may be made in these particulars. These particulars do not form part of any offer or contract and must not be relied upon as statements or representations of fact. 2: Any areas, measurements or distances are approximate. The text, photographs and plans are for guidance only and are not necessarily comprehensive. It should not be assumed that the property has all necessary planning, building regulation or other consents and Savills have not tested any services, equipment or facilities. Purchasers must satisfy themselves by inspection or otherwise. 20200806LRTR

