



**A FABULOUS THREE BEDROOM APARTMENT LOCATED ON ONE OF MARYLEBONE'S  
ELEGANT GARDEN SQUARES**

MONTAGU SQUARE, MARYLEBONE, LONDON, W1H

**Guide Price £2,750,000 – Leasehold approximately 162 years remaining**





# A FABULOUS THREE BEDROOM APARTMENT LOCATED ON ONE OF MARYLEBONE'S ELEGANT GARDEN SQUARES

MONTAGU SQUARE, MARYLEBONE,  
LONDON W1H

**Guide Price £2,750,000 – Leasehold approximately 162  
years remaining**

Open-plan kitchen/reception room • Three  
bedrooms • Bathroom • Further shower room  
Service charge approximately £1,100 pa • EPC = C

## Location

Montagu Square is a beautiful, primarily Georgian garden square located in the heart of Marylebone. The flat is superbly located for the greenery of both Hyde Park and Regent's Park, together with the world class shops and restaurants of Marylebone and the West End. Residents of the square have access to the private manicured square gardens for a small annual fee.

The transport links are excellent from neighbouring Marble Arch (approximately 0.4 miles) and Baker Street (approximately 0.5 miles) underground stations, Marylebone (approximately 0.4 miles) and Paddington (approximately 0.9 miles) train stations, and access to the West and Heathrow via the A40.

## Description

With fabulous views over Montagu Square Gardens, this beautifully presented apartment is set over the third and fourth floors of an attractive period building. Offering a superb balance of accommodation and a wealth of natural light, this spacious three bedroom apartment also benefits from a high specification throughout.

NB: Please note that the loft space is non-demised, however access is granted by licence to the current vendor/proprietor. Further enquiries regarding the details of the licence can be obtained through Savills or solicitors.



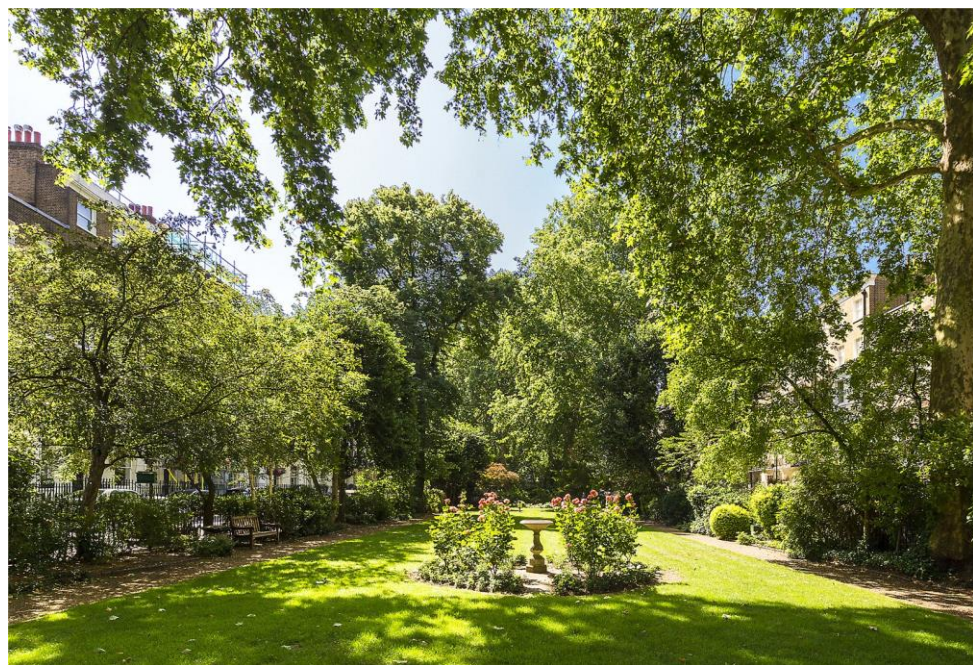


### Energy Performance

A copy of the full Energy Performance Certificate is available on request.

### Viewing

Strictly by appointment with Savills.







## Montagu Square, W1H

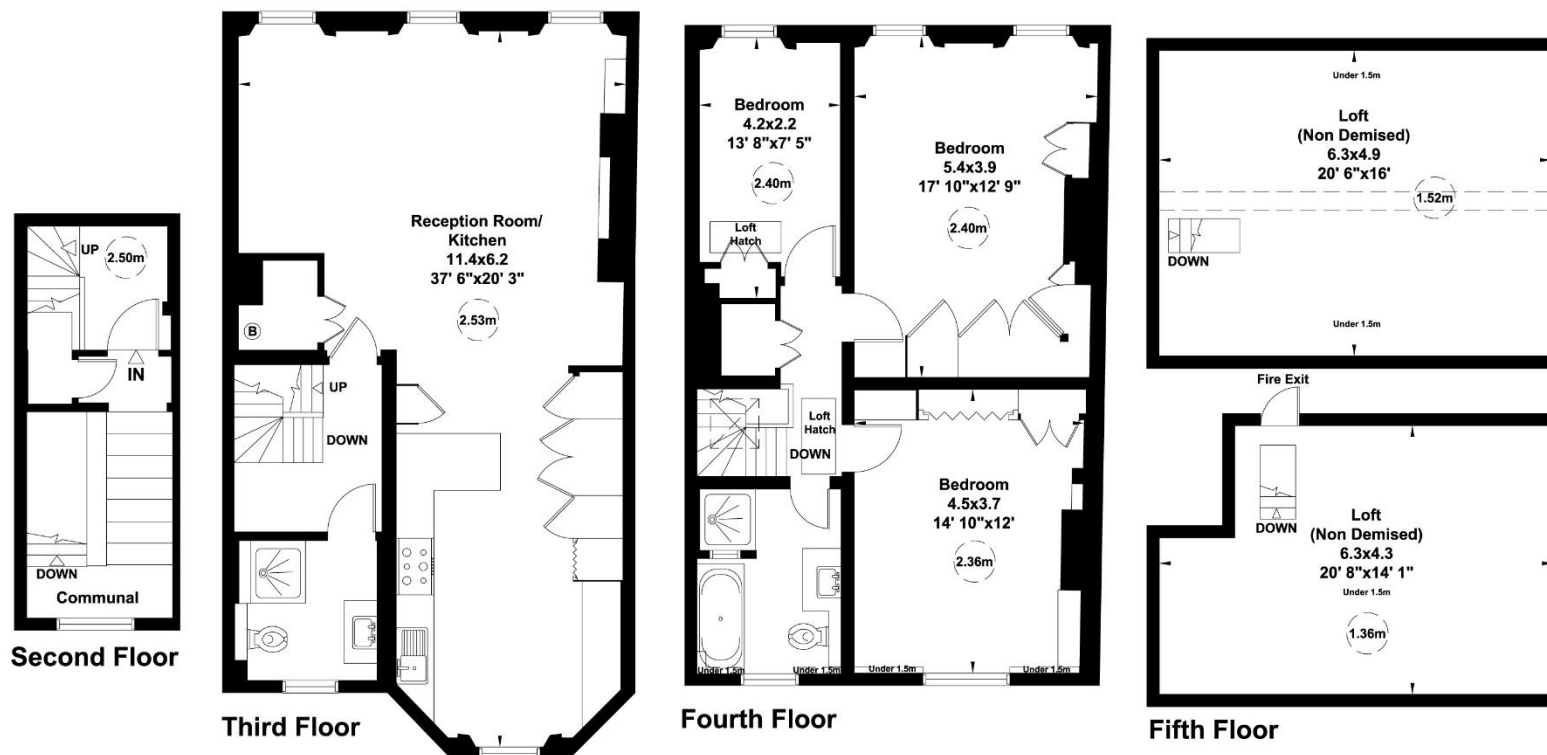
Gross internal area (approx.)

135 Sq m (1452 Sq ft) Including Under 1.5m

135 Sq m (1448 Sq ft) Excluding Under 1.5m

For identification only, Not to Scale

capital 020 8671 7722



Not to scale, for guidance only and must not be relied upon as a statement of fact. All measurements and areas are approximate only (and have been prepared in accordance with the current edition of the RICS Code of Measuring Practice).

**Marylebone & Fitzrovia**  
 Claire Reynolds  
 creynolds@savills.com  
 +44 (0) 20 3527 0400

**savills.co.uk**

Important notice: Savills, their clients and any joint agents give notice that: 1: They are not authorised to make or give any representations or warranties in relation to the property either here or elsewhere, either on their own behalf or on behalf of their client or otherwise. They assume no responsibility for any statement that may be made in these particulars. These particulars do not form part of any offer or contract and must not be relied upon as statements or representations of fact. 2: Any areas, measurements or distances are approximate. The text, photographs and plans are for guidance only and are not necessarily comprehensive. It should not be assumed that the property has all necessary planning, building regulation or other consents and Savills have not tested any services, equipment or facilities. Purchasers must satisfy themselves by inspection or otherwise. 20190628EALU

NB: Please note that the loft space is non-demised, however access is granted by licence to the current vendor/proprietor. Further enquiries regarding the details of the licence can be obtained through Savills or solicitors.

