



A SELECTION OF 4 NEW BUILD TOWNHOUSES IN A PRIVATE NO THROUGH ROAD JUST OFF CAVENDISH SQUARE

DEANS MEWS, MARYLEBONE, LONDON, W1G 9EF

Prices from £1,695 pw (£7,345 pcm) + fees and other charges apply.*

Available Summer 2019



Situation

Deans Mews enjoys an enviable location accessed under an arch on the North side of Cavendish Square. A cobbled approach leads to the cul-de-sac of 4 impressive new build houses, offering a private setting just moments from Oxford & Regent Street, and all the West End has to offer.

Oxford Circus Underground – 0.3 miles

Bond Street Station – 0.5 miles

Regent's Park – 0.7 miles

Marylebone High Street – 0.2 miles

Selfridges – 0.4 miles

Description

Finished to an exceptional standard, specification includes;

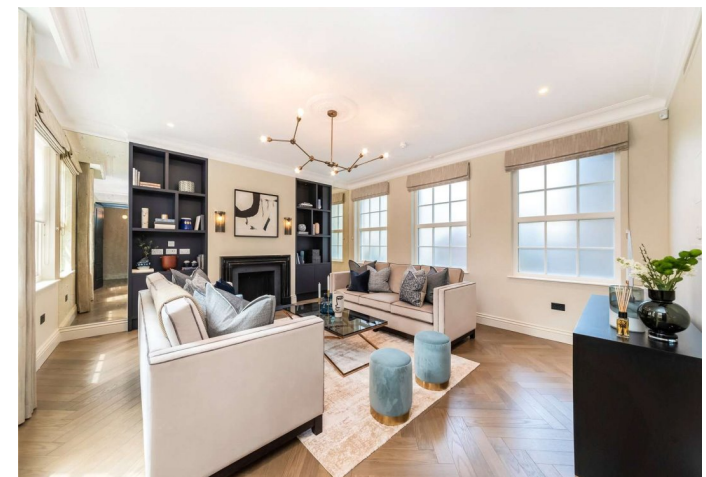
- Intervari kitchen suites & joinery
- Marble bathroom suites
- Herringbone wood flooring to living areas
- Wall colours by Farrow & Ball
- Comfort cooling to living room & main bedrooms
- Siemens kitchen appliances
- Terraces to houses 7 & 8
- Furnished & unfurnished options
- Parking by separate negotiation

Energy Performance

A copy of the full Energy Performance Certificate is available on request.

Viewing

Strictly by appointment with the sole letting agent Savills.



Houses 7 & 8



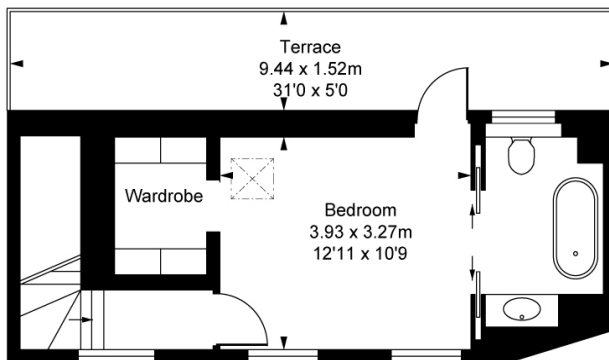
Deans Mews, W1G

Approximate Gross Internal Area

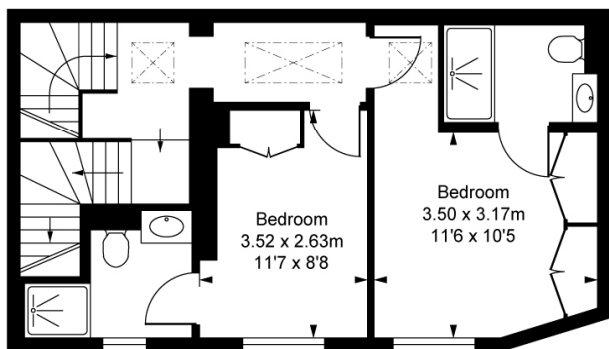
113.60 sq m / 1,223 sq ft

(CH = Ceiling Heights)

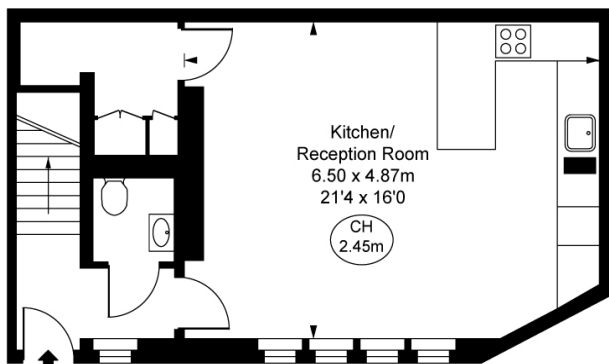
Second Floor
Approximate Gross Internal Area
26.89 sq m / 289 sq ft



First Floor
Approximate Gross Internal Area
43.63 sq m / 470 sq ft



Ground Floor
Approximate Gross Internal Area
43.08 sq m / 464 sq ft

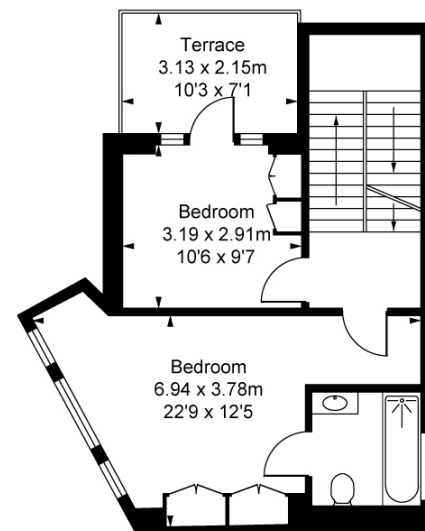


This plan is not to scale. It is for guidance and not for valuation purposes.

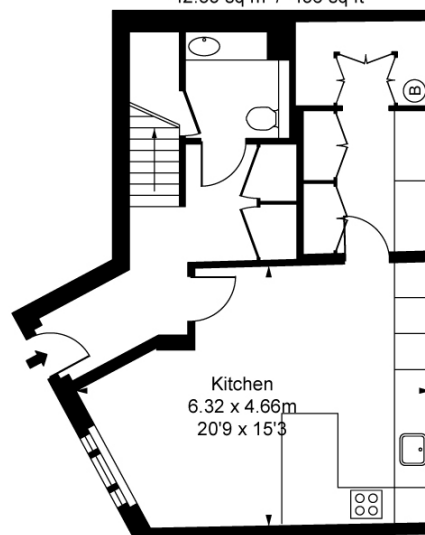
All measurements and areas are approximate only, and have been prepared in accordance with the current edition of the RICS Code of Measuring Practice.
© Fulham Performance



Approximate Gross Internal Area
169.82 sq m / 1,828 sq ft
Eaves Storage
7.79 sq m / 84 sq ft



Second Floor
Approximate Gross Internal Area
42.35 sq m / 456 sq ft



Ground Floor
Approximate Gross Internal Area
50.85 sq m / 547 sq ft

This plan is not to scale. It is for guidance and not for valuation purposes.

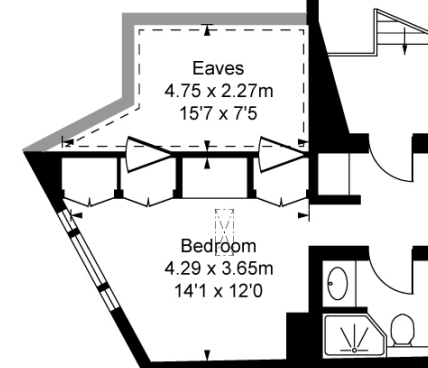
All measurements and areas are approximate only, and have been prepared in accordance with the current edition of the RICS Code of Measuring Practice.
© Fulham Performance

Total Areas Including Eaves

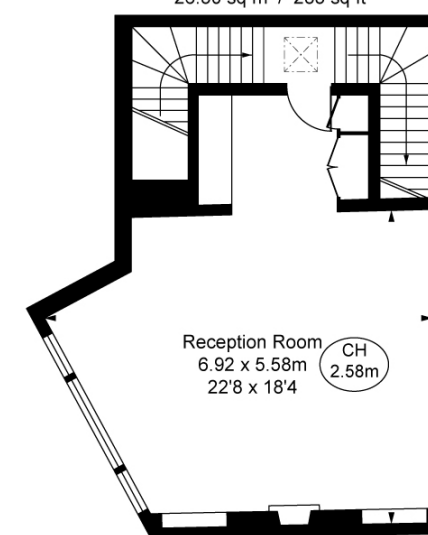
177.61 sq m / 1,912 sq ft

(Including restricted height
under 1.5m [= = =])

(CH = Ceiling Heights)

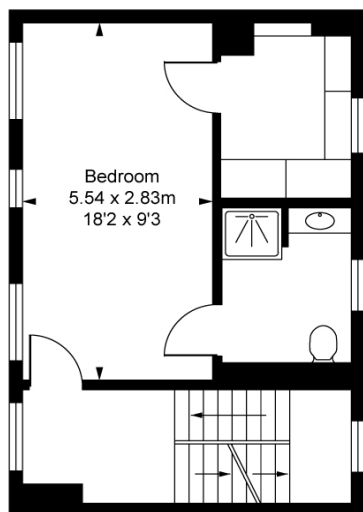


Third Floor
Approximate Gross Internal Area
26.30 sq m / 283 sq ft

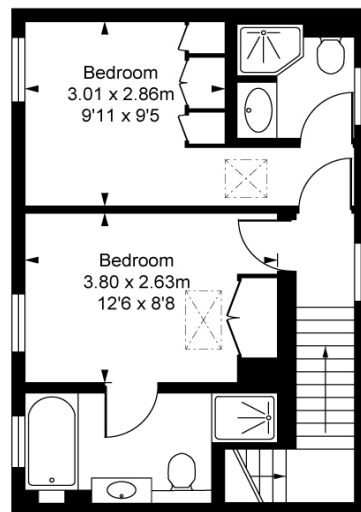


First Floor
Approximate Gross Internal Area
50.32 sq m / 542 sq ft

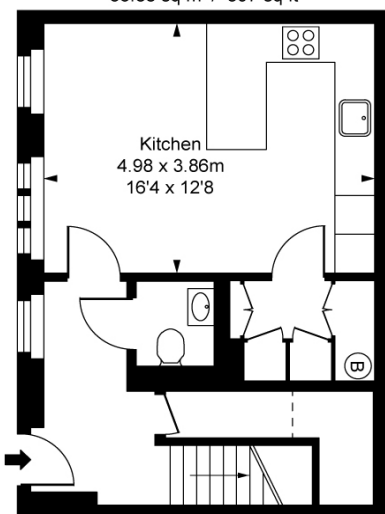
Deans Mews, W1G
 Approximate Gross Internal Area
148.06 sq m / 1,594 sq ft
 (CH = Ceiling Heights)



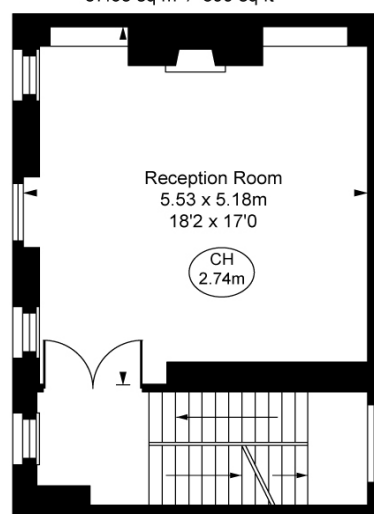
Second Floor
 Approximate Gross Internal Area
 36.88 sq m / 397 sq ft



Third Floor
 Approximate Gross Internal Area
 37.03 sq m / 399 sq ft



Ground Floor
 Approximate Gross Internal Area
 37.26 sq m / 401 sq ft

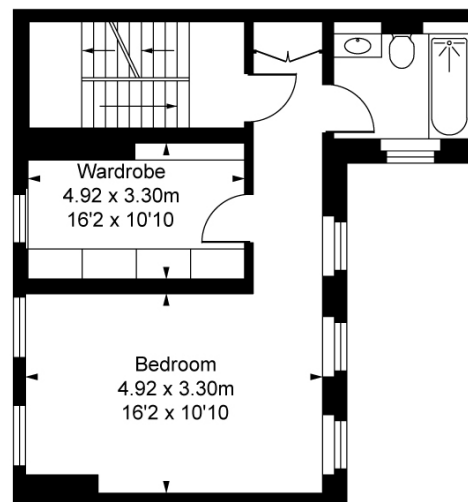


First Floor
 Approximate Gross Internal Area
 36.89 sq m / 397 sq ft

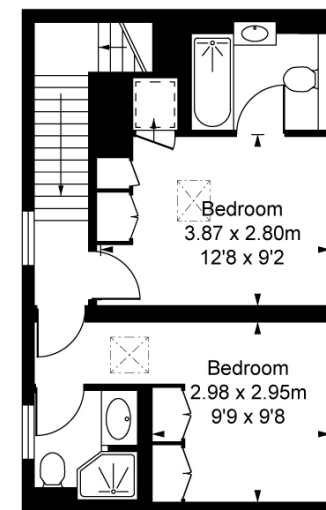
**Approximate Gross Internal Area
 167.70 sq m / 1,805 sq ft**



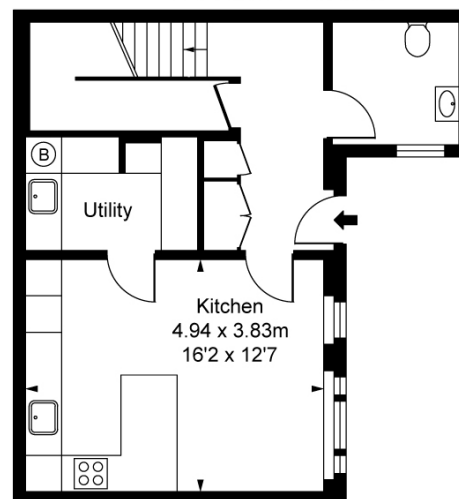
(Including restricted height
 under 1.5m [- - - - -])
 (CH = Ceiling Heights)



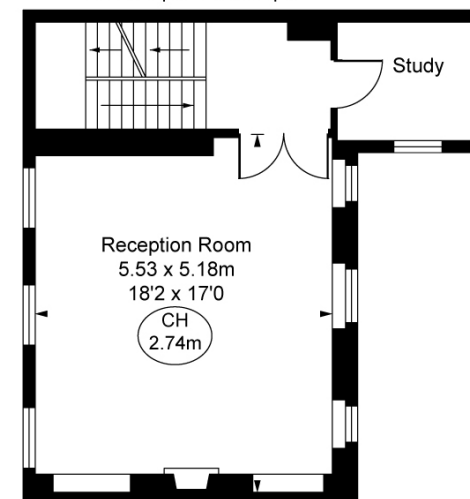
Second Floor
 Approximate Gross Internal Area
 42.88 sq m / 462 sq ft



Third Floor
 Approximate Gross Internal Area
 38.93 sq m / 419 sq ft



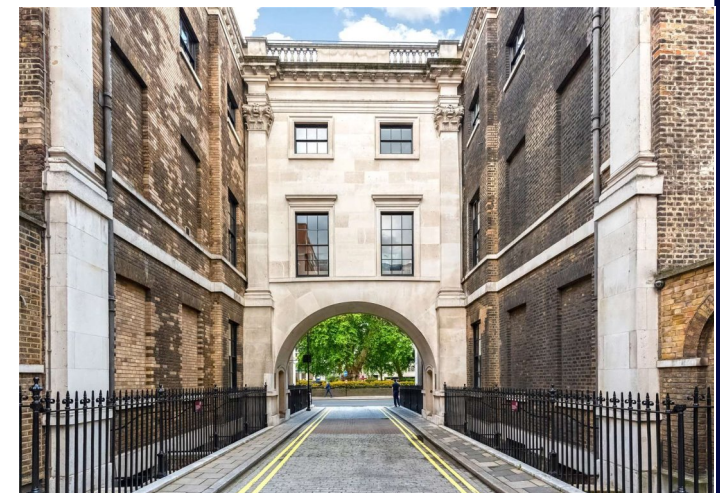
Ground Floor
 Approximate Gross Internal Area
 42.97 sq m / 463 sq ft



First Floor
 Approximate Gross Internal Area
 42.92 sq m / 462 sq ft

This plan is not to scale. It is for guidance and not for valuation purposes.
 All measurements and areas are approximate only, and have been prepared in accordance with the current edition of the RICS Code of Measuring Practice.
 © Fulham Performance

This plan is not to scale. It is for guidance and not for valuation purposes.
 All measurements and areas are approximate only, and have been prepared in accordance with the current edition of the RICS Code of Measuring Practice.
 © Fulham Performance



Please note that the local area may be affected by aircraft noise, you should make your own enquiries regarding any noise within the area before you make any offer.

*There are different rules and fees for different tenancy types. For details of our fees and charges go to savills.co.uk/tenant-fees. For more detailed information read our [Applicant Guide](#), hard copy available on request. 20190611CRSE

Marylebone & Fitzrovia Lettings

Christopher Saye
christopher.saye@savills.com

+44 (0) 2035 270 406

Important notice: Savills, their clients and any joint agents give notice that: 1: They are not authorised to make or give any representations or warranties in relation to the property either here or elsewhere, either on their own behalf or on behalf of their client or otherwise. They assume no responsibility for any statement that may be made in these particulars. These particulars do not form part of any offer or contract and must not be relied upon as statements or representations of fact. 2: Any areas, measurements or distances are approximate. The text, photographs and plans are for guidance only and are not necessarily comprehensive. It should not be assumed that the property has all necessary planning, building regulation or other consents and Savills have not tested any services, equipment or facilities. Tenants must satisfy themselves by inspection or otherwise.

savills.co.uk