



Castle Wharf the epitome of boutique waterside living.

A02.03 Castle Wharf, 2a Chester Road, Manchester, M15

£425,000 Leasehold (950 years remaining)





Bespoke development of only 188 properties • Unique canal side setting • Over 70% of the properties have private outside space • 1, 2 and 3 bedroom apartments and penthouses • On site concierge • Fully equipped resident's gym • Spa, including sauna, steam and treatment rooms • Waterfront terrace • Completion from Q3/Q4 2021 • Computer generated images

About this property

With 188 homes and exceptional communal facilities, Castle Wharf will bring boutique waterside living to Manchester city centre. The spacious apartments feature high quality finishes and exceptional communal facilities, and have been thoughtfully designed to provide a luxurious and relaxing ambience. Every element has been carefully considered and the interior design features a layering of materials, forms, textures and colours that is contemporary, chic and above all liveable.

For socialising there are private dining facilities and luxurious lounges where residents can relax, have a coffee or even a glass of wine.

The development is also ideally equipped for business and working from home, with two meeting rooms available through a booking system and which include wired internet and high speed WiFi. One meeting room has a 65" TV, collaboration camera for video calls and wireless connectivity to devices to offer seamless connectivity.

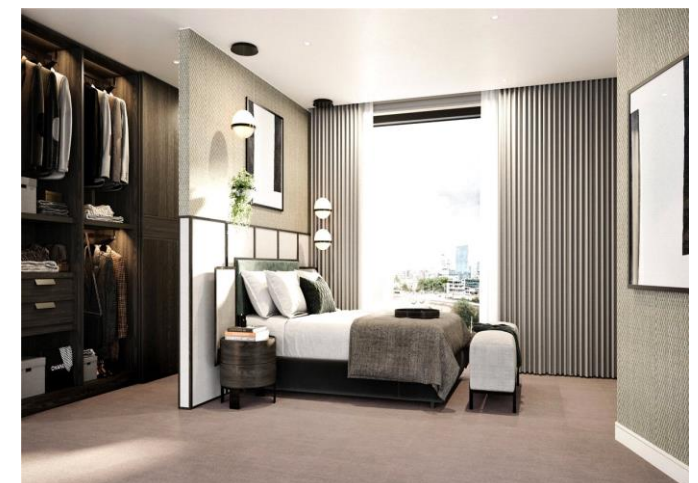
Ample secure parking, accessed via a number plate recognition system and including electric vehicle charging points, is situated on the lower levels, along with ample cycle store spaces for residents to keep their bikes.

Key Development Features:

Nearly 75% of apartments have private outside space
Generously sized apartments
Spectacular waterside location
Extensive residents only amenities within the development
On site, 24hrs a day Concierge team
Very high standard of specification and finish
Minutes walk from Deansgate and the central business district
A development by Manchester's leading developer, Renaker

Location

Castle Wharf is located in Manchester's Castlefield quarter, a city conservation area with a strong heritage. The canalside terrace overlooks Castlefield's pedestrianised area which is home to an eclectic mix of sophisticated and contemporary bars and restaurants with extensive outdoor seating. Castlefield Bowl, an intimate outdoor music and entertainment venue is a short walk away while HOME, Manchester's centre for contemporary theatre, film, art, music and more is within easy reach.



In the heart of the UK's most liveable city, Castle Wharf is ideally located for access to business, culture, education and excellent national and international transport links.

Walking:

Deansgate Castlefield Station 2 mins

University of Manchester 18 mins

Selfridges / Harvey Nichols 16 mins

Car:

Old Trafford Stadium 7 mins

Trafford Centre 15 mins

Manchester Airport 19 mins

*Times taken from Google Maps September 2020

Development Information:

Completion: Expected completion date Q2/Q3 2021

Tenure: Leasehold 950 years from July 2015

Service Charge: £2.50psf + £0.40psf (buildings insurance)

Ground Rent: 0.1% of the sale price (capped at £500 and reviewed every 10 years)

Please contact us for further information.

Tenure

Leasehold (950 years remaining)

Local Authority

Manchester City Council

Energy Performance

EPC Rating = B

Viewing

All viewings will be accompanied and are strictly by prior arrangement through Savills North West New Homes, Manchester Office.

Telephone: +44 (0) 161 244 7705.

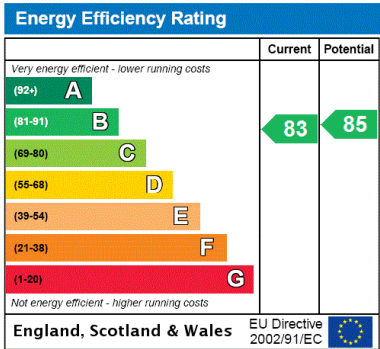




A02.03 Castle Wharf, 2a Chester Road, Manchester, M15 4ST
Gross Internal Area 1033 - 1033 sq ft, 96 - 96 m²

Jamie Adam
Manchester RDS
+44 (0) 161 244 7705
jamie.adam@savills.com

onTheMarket.com | savills | savills.co.uk



Important Notice Savills, its clients and any joint agents give notice that 1: They are not authorised to make or give any representations or warranties in relation to the property either here or elsewhere, either on their own behalf or on behalf of their client or otherwise. They assume no responsibility for any statement that may be made in these particulars. These particulars do not form part of any offer or contract and must not be relied upon as statements or representations of fact. 2: Any areas, measurements or distances are approximate. The text, photographs and plans are for guidance only and are not necessarily comprehensive. It should not be assumed that the property has all necessary planning, building regulation or other consents and Savills have not tested any services, equipment or facilities. Purchasers must satisfy themselves by inspection or otherwise. 20201005JMDA

