



SLOANE
BUILDING
CHELSEA

10



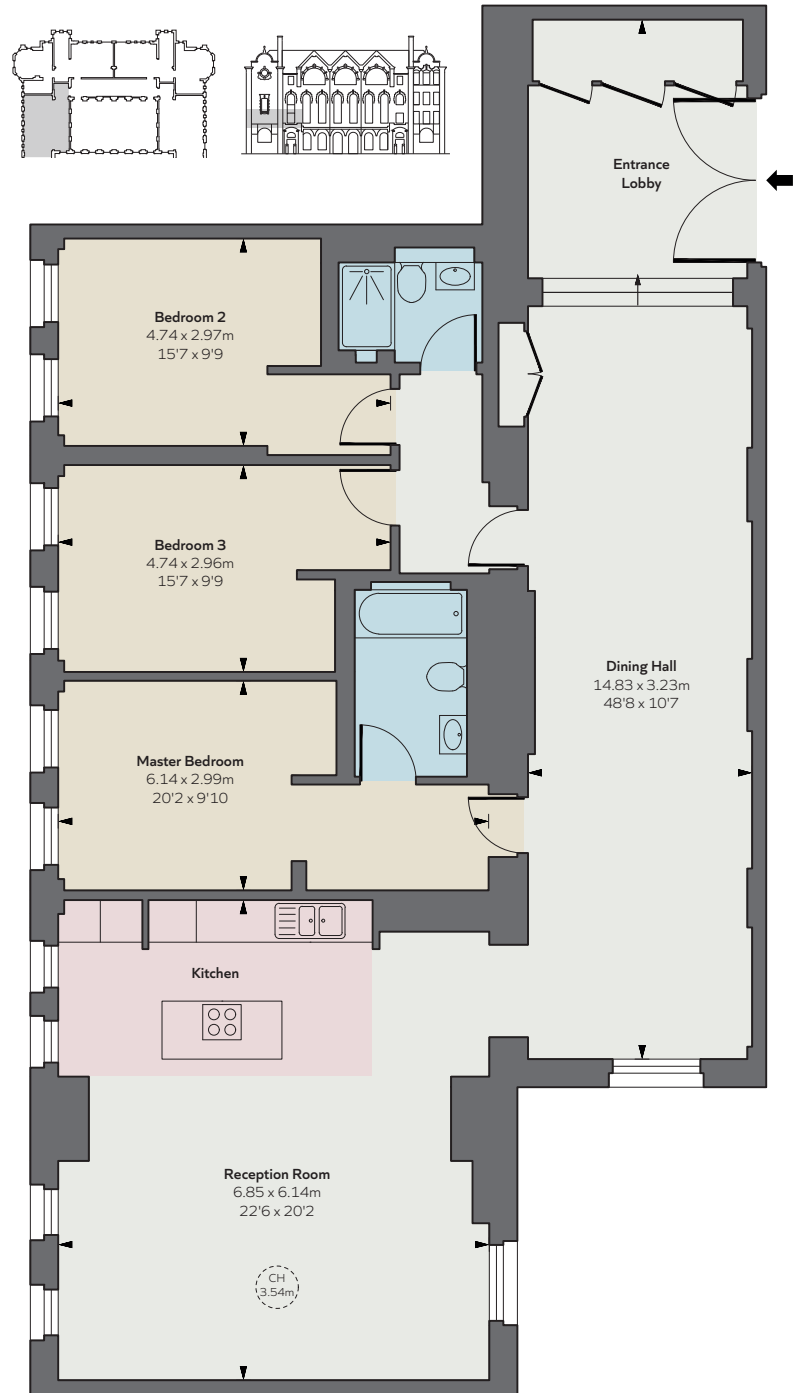



SLOANE
BUILDING
CHELSEA

10

The Sloane Building was built in 1908 in an engaging Edwardian style, with a wealth of large feature windows set into the brick façade to illuminate the interiors within. Originally known as the Sloane School, it was one of the most accomplished buildings designed by architect Thomas J. Bailey and the distinctive personality of the Grade II listed school, with its soaring classrooms and dramatic internal spaces, made it perfect for revival and conversion into private residences. Apartment 10 has been beautifully furnished and decorated by Joanna Wood and offers sensational entertaining space with imposing ceiling heights of approximately 3.5 metres.





FIRST FLOOR

ACCOMMODATION

- Entrance Lobby
- Dining Hall/Sitting Room
- Reception Room with kitchen
- Master Bedroom with en suite bathroom
- 2 Further double bedrooms
- 1 Further shower room

AMENITIES

- Secure underground parking (by separate negotiation)
- 24 Hour concierge and security
- Lutron LED lighting system with scene setting
- Crestron control system
- Wired for audio
- Underfloor heating
- Comfort cooling to reception room and master bedroom

APPROXIMATE GROSS INTERNAL AREA

153.04 sq m / 1,647 sq ft

TERMS

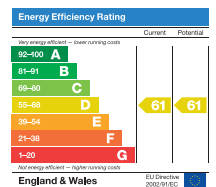
Price: £3,350,000

Contents available by separate negotiation

Tenure: 999 year lease + Share of Freehold

Service Charge: Approximately £8.84 per square foot

Local Authority: The Royal Borough of Kensington and Chelsea



+44 (0)20 7349 4304
chelsea@knightfrank.com



+44 (0)20 7409 8756
newhomessp@savills.com