



A pretty mews house tucked away

Adrian Mews, London, SW10

Freehold



- Reception room • Kitchen
- Study • 3 bedrooms
- En-suite bathroom
- Further bathroom
- Cloakroom • Utility room
- Parking space

Adrian Mews, London, SW10
Approximate Area 132.8 sq m / 1429 sq ft
Including Limited Use Area 1.0 sq m / 11 sq ft



savills

savills.co.uk

Agne Karuzaite
 Savills Chelsea
0207 578 9000
 akaruzaite@savills.com

Description

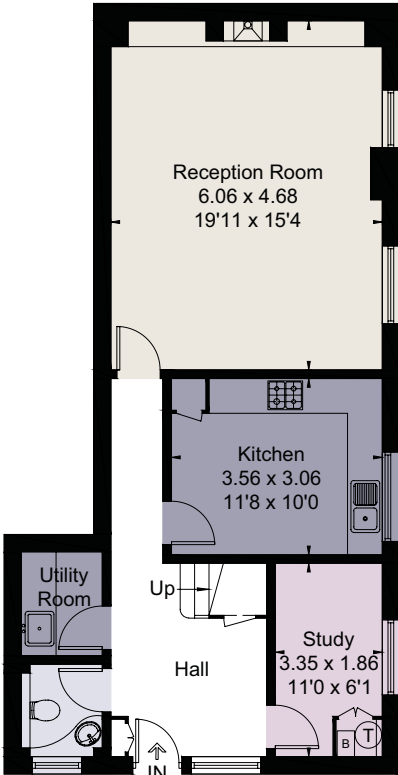
A spacious mews house approached through an archway is situated just off Ifield Road in Chelsea, SW10. The property offers a well-balanced living space over two floors with spacious living room and a separate kitchen, a further study, cloakroom and utility room all on the ground floor. The first floor comprises a master bedroom with en-suite bathroom, two further bedrooms and a family bathroom. There is also a private parking space just outside of the house. The property could now benefit from some updating.

Local Authority
 The Royal Borough of Kensington and Chelsea

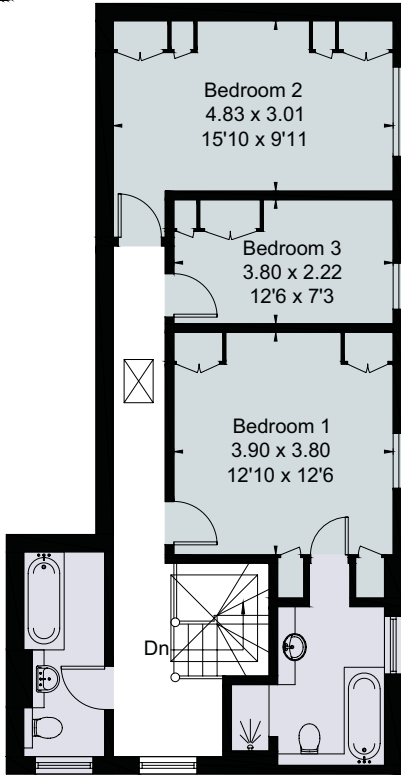
Energy Performance
 A copy of the full Energy Performance Certificate is available upon request.

Viewing
 Strictly by appointment with Savills.

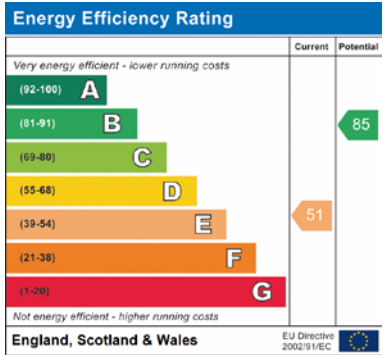
[] = Reduced head height below 1.5m



Ground Floor



First Floor



For identification only. Not to scale. © 192806AK

Important notice Savills, its clients and any joint agents give notice that 1: They are not authorised to make or give any representations or warranties in relation to the property either here or elsewhere, either on their own behalf or on behalf of their client or otherwise. They assume no responsibility for any statement that may be made in these particulars. These particulars do not form part of any offer or contract and must not be relied upon as statements or representations of fact. 2: Any areas, measurements or distances are approximate. The text, photographs and plans are for guidance only and are not necessarily comprehensive. It should not be assumed that the property has all necessary planning, building regulation or other consents and Savills have not tested any services, equipment or facilities. Purchasers must satisfy themselves by inspection or otherwise. Brochure by fourwalls-group.com

