



BLORE HOUSE

KINGS CHELSEA, SW10



THIS LIGHT AND SPACIOUS APARTMENT IS SITUATED ON THE SECOND FLOOR OF THIS SOUGHT AFTER GATED DEVELOPMENT.

The flat has a welcoming entrance hall with dual aspect in the sitting room and a lovely Kitchen. In addition, the apartment offers two double bedrooms both with en-suites, a study/3rd bedroom and a separate bathroom.

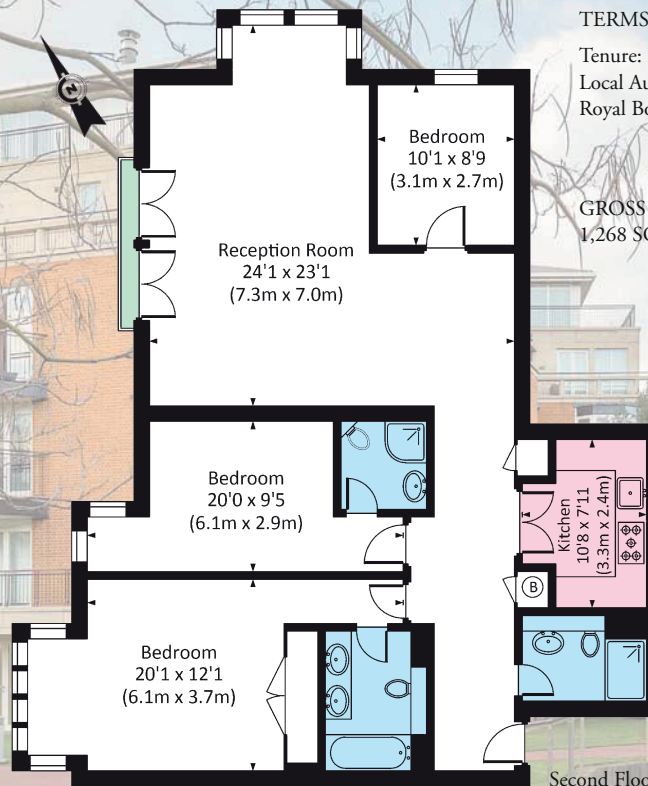
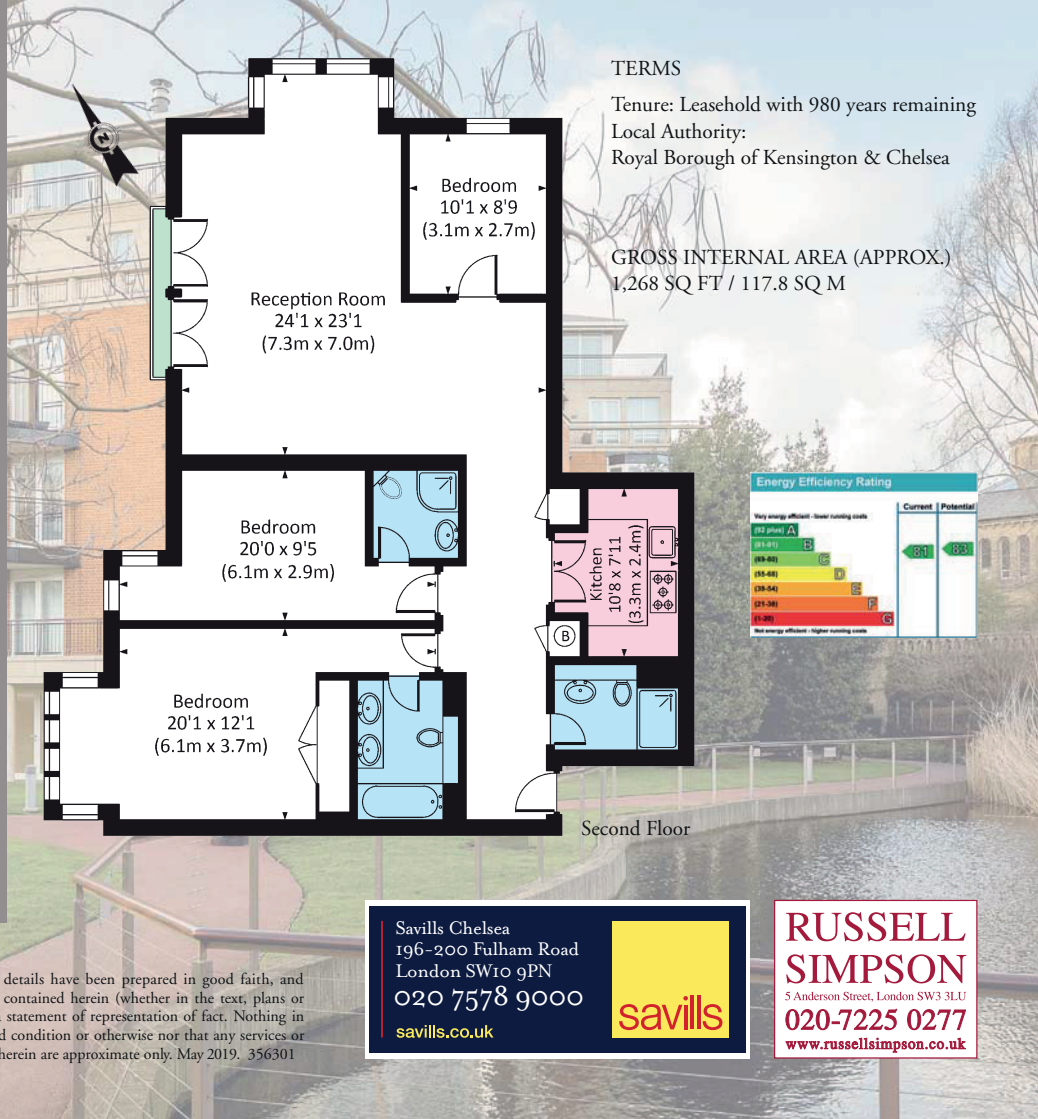
Set within secure landscaped communal gardens, Kings Chelsea was built in 2005 on the site of Kings College. It offers excellent services including 24 hour portage, underground parking, an indoor gym with a large swimming pool and an outdoor tennis court.

ACCOMMODATION

Entrance hall | Reception | Kitchen | 2 ensuite bedrooms
Bedroom 3/study | Family bathroom | Communal gardens
Gym | Swimming pool | 24 hour portage | Tennis court
1 parking space

In accordance with the Property Mis-Description Act 1991, the following details have been prepared in good faith, and are not intended to constitute part of an offer or contract. Any information contained herein (whether in the text, plans or photographs) is given in good faith but should not be relied upon as being a statement of representation of fact. Nothing in these Particulars shall be deemed to be a statement that the property is in good condition or otherwise nor that any services or facilities are in good working order. Any measurements of distances referred to herein are approximate only. May 2019. 356301

Brochure by **capital group** 020 8671 5448



TERMS

Tenure: Leasehold with 980 years remaining
Local Authority:
Royal Borough of Kensington & Chelsea

GROSS INTERNAL AREA (APPROX.)
1,268 SQ FT / 117.8 SQ M



Savills Chelsea
196-200 Fulham Road
London SW10 9PN
020 7578 9000
savills.co.uk



**RUSSELL
SIMPSON**
5 Anderson Street, London SW3 3LU
020-7225 0277
www.russellsimpson.co.uk