

BELVEDERE GARDENS

APARTMENT 1201
TWO BEDROOM APARTMENT

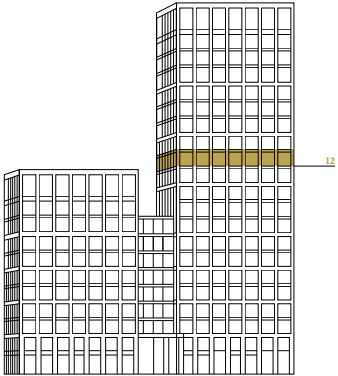
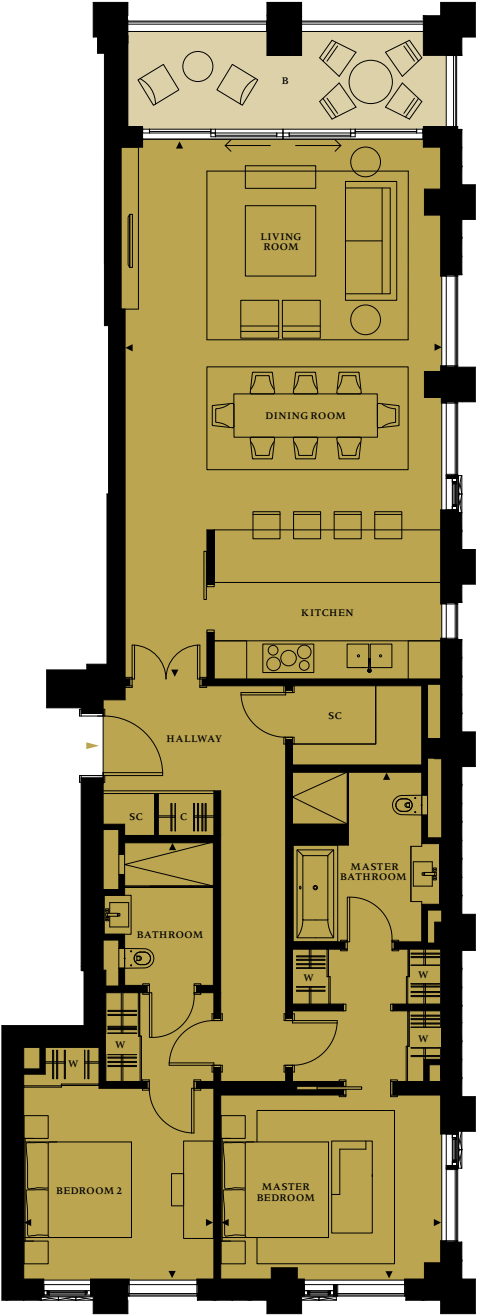
BELVEDERE GARDENS

TWO BEDROOM APARTMENT

| | | | | | |
|----------------------|----------|----------------|---------------|-----------------|-------------|
| Living/Kitchen | | 5.9m x 10.0m | | 19'05" x 32'10" | |
| Master Bedroom Suite | | 4.2m x 9.4m | | 13'10" x 30'01" | |
| Bedroom 2 | | 3.5m x 8.1m | | 11'06" x 26'07" | |
| Floor | Apt. No. | Apartment Area | | Balcony Area | |
| 12 | 1201 | 132.1 sq m | 1,422.0 sq ft | 10.9 sq m | 117.0 sq ft |



- Key**
- C Cupboard
 - W Wardrobe
 - SC Service Cupboard
 - B Balcony
 - JB Juliette Balcony



Floorplans shown for Belvedere Gardens are approximate measurements only. Floorplans are not to scale. Exact layout and sizes may vary.



View from Belvedere Gardens, Apartment 1201, taken June 2019



View from Belfry Gardens, Apartment 1201, taken June 2019



View from Belvedere Gardens, Apartment 1201, taken June 2019



View from Belvedere Gardens, Apartment 1201, taken June 2019



View from Belvedere Gardens, Apartment 1201, taken June 2019



View from Belvedere Gardens, Apartment 1201, taken June 2019