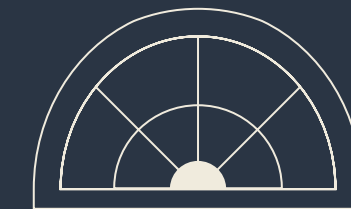


CHADLINGTON HOUSE  
SUNNINGDALE





# CHADLINGTON HOUSE

## SUNNINGDALE

*“Chadlington House has just been refurbished by Ambergris Interiors who have done an incredible job in modernising and improving the house; they have achieved some of the most beautiful finishes and styling that I have seen in recent times. Chadlington House is now a very special family home which will have great appeal in the market.”*

*Trevor Kearney  
Savills London Office*

**Guide Price: £6,500,000**

These particulars are only as a guide and must not be relied on as a statement of fact.  
Your attention is drawn to the Important Notice on the last page of text.

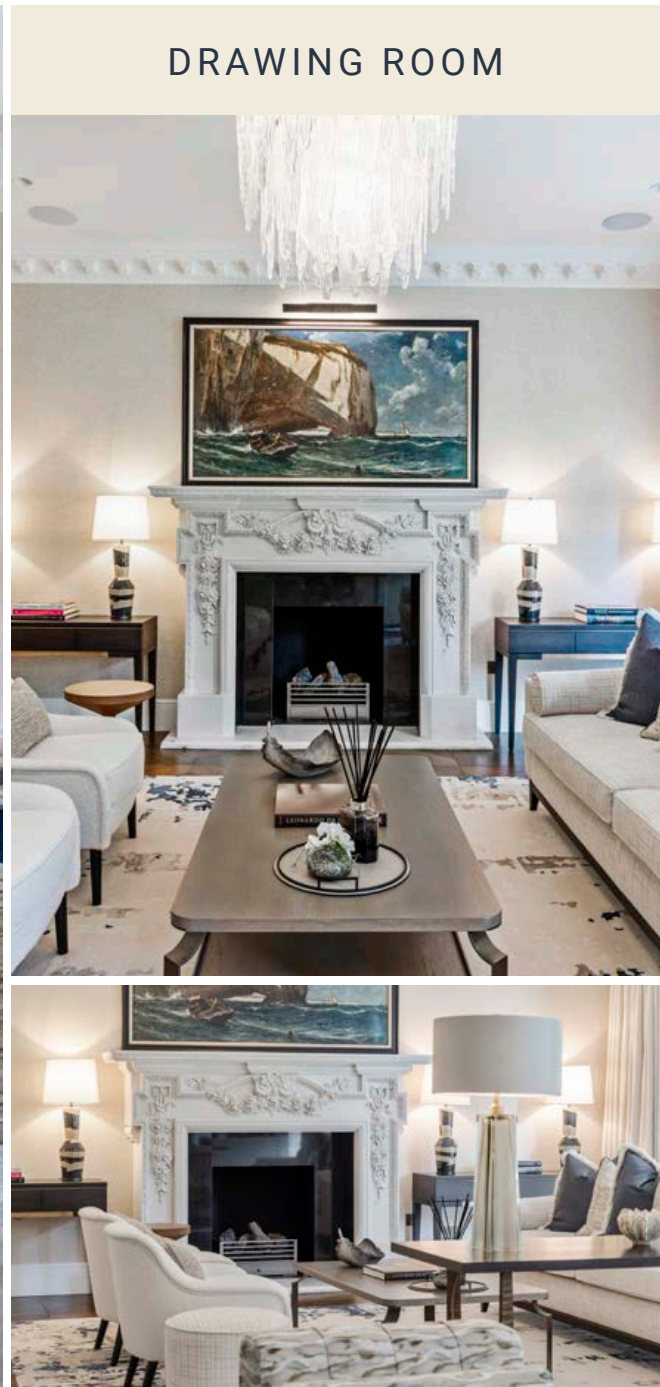




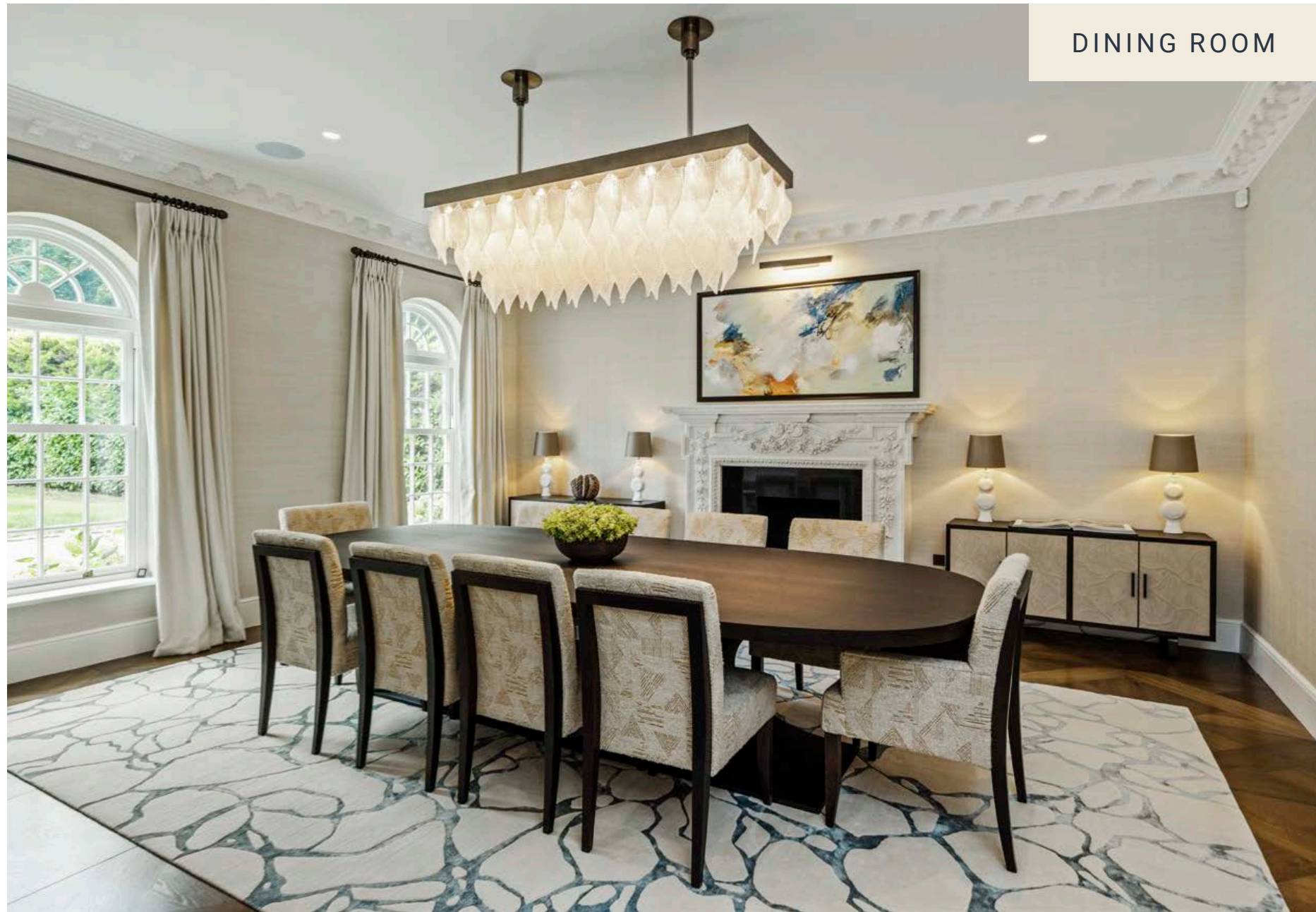
ENTRANCE HALL









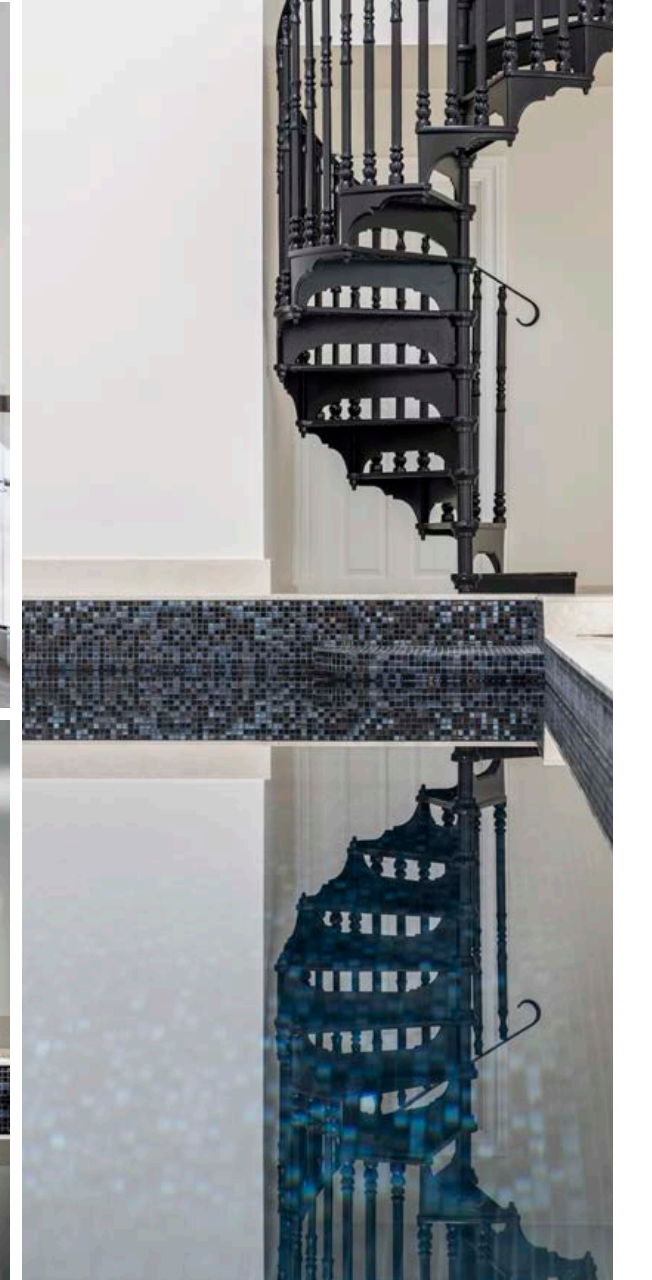
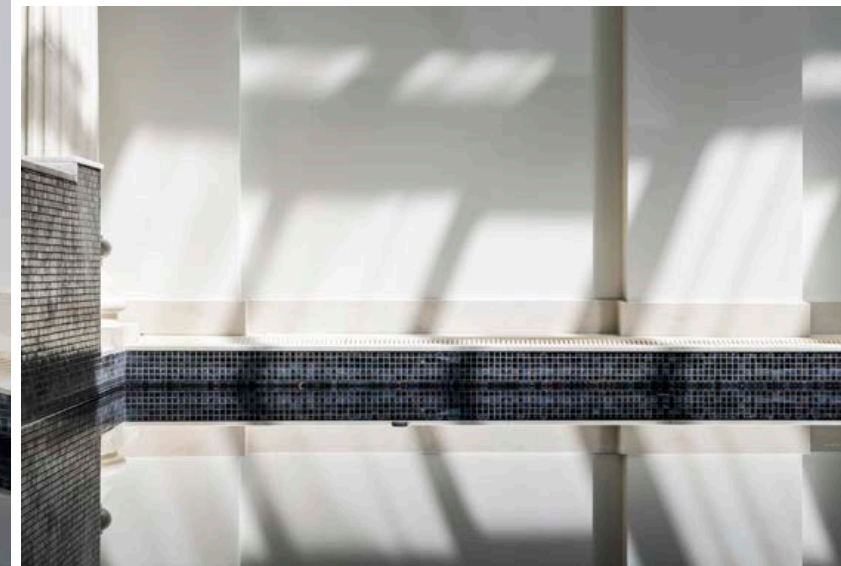






KITCHEN





LEISURE COMPLEX





CINEMA ROOM





PRINCIPAL BEDROOM





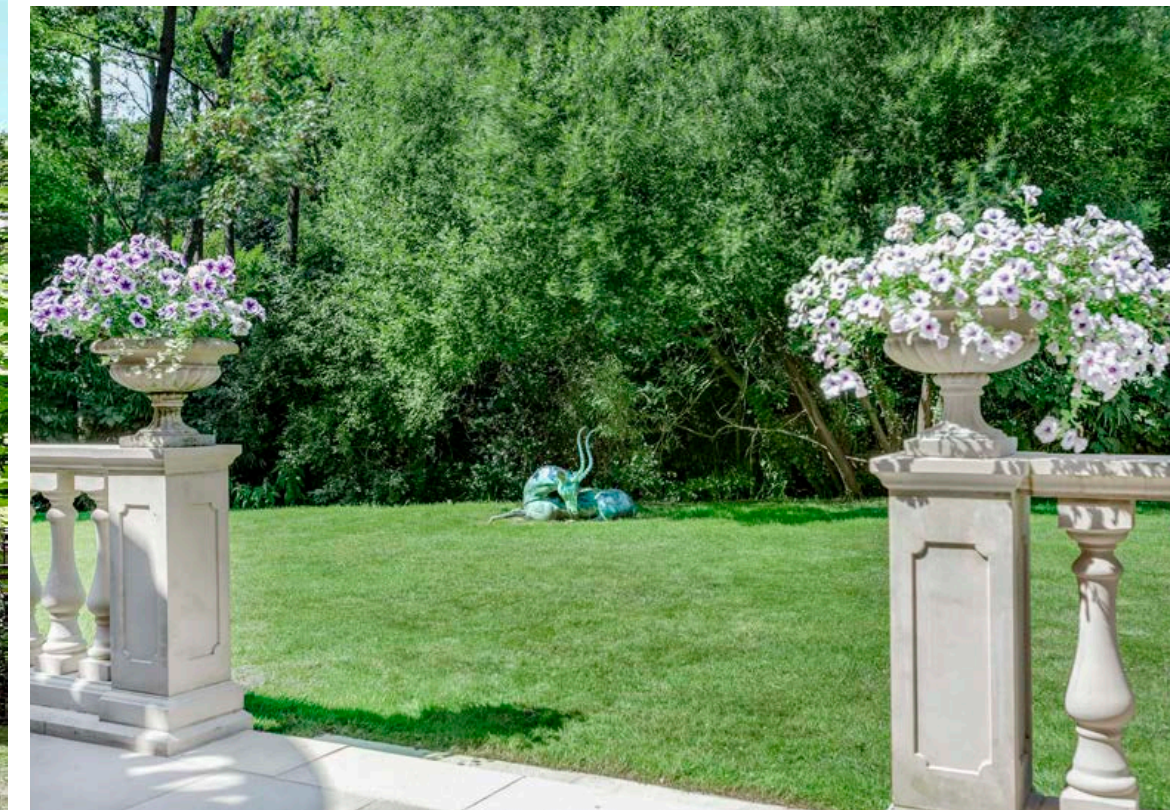
## BEDROOM SUITES







## GARDEN AND GROUNDS





Chadlington House, SL5

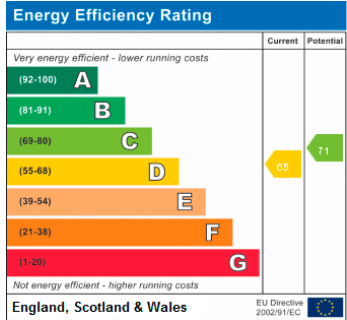
Approximate gross internal area

11434 sq ft / 1062.22 sq m

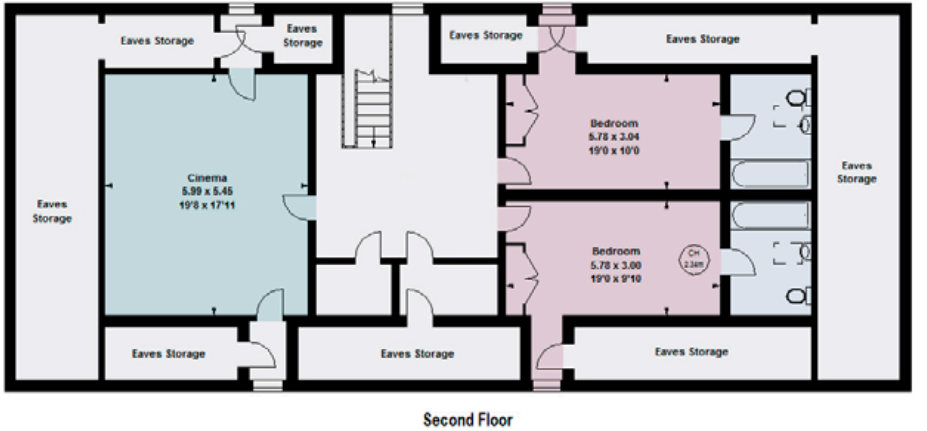
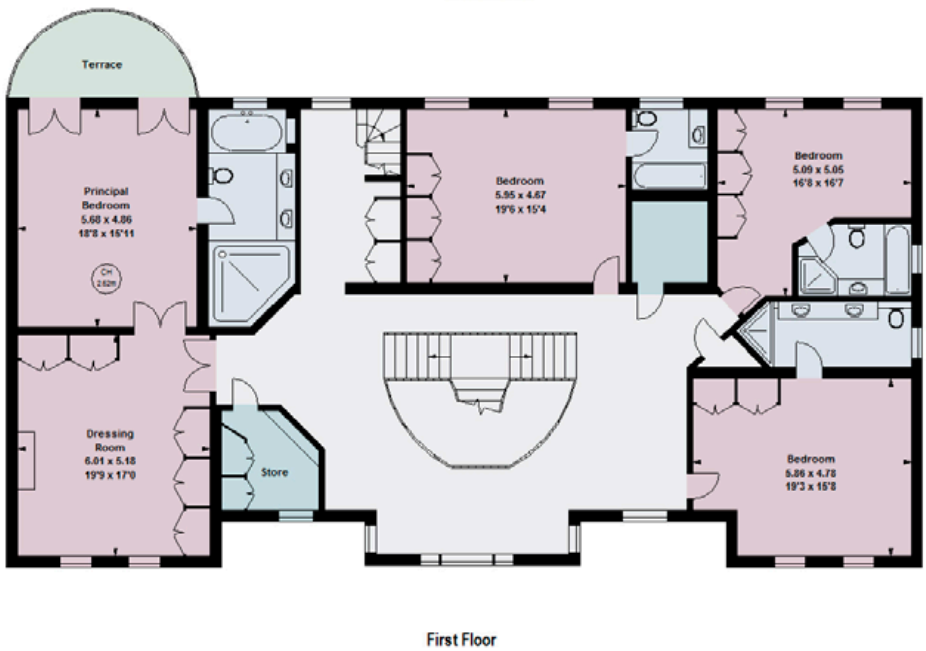
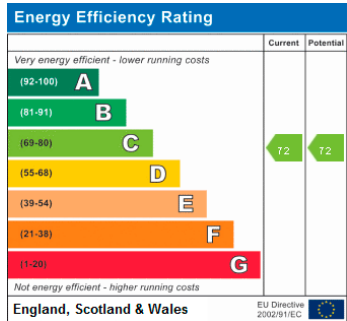
(Including Eaves Storage, Outbuilding & Pump Room)



CHADLINGTON HOUSE



FLAT AT CHADLINGTON HOUSE



**Savills London Office**  
33 Margaret Street, London  
W1G 0JD  
Trevor Kearney  
07807 999872  
tkearney@savills.com

**Savills Sunningdale**  
Mount Lodge, London Road  
SL5 0EP  
Charles Broadbent-Combe  
07972 000224  
chbroadbent@savills.com





