



# Modern semi detached house

4 Keepers Close, Knutsford, Cheshire, WA16 8XS

Leasehold





- Sitting / Dining Room • Kitchen • Bedroom one
- Bedroom Two • Family Bathroom
- Rear Garden / Off Road Parking

### Situation

Keepers Close is a cul de sac location on the edge of town which is just under one and half miles away from Knutsford. There are local services including a medical centre, veterinarian, fuel station with convenience store all within a short walk. The town centre offers a wide range of shopping, restaurants and bars as well as a rail station. Junction 19 of the M6 is accessible at Tabley. Tatton Park can be accessed on foot via nearby Mallard Close through the Dog Wood gate.

Knutsford is known for its wonderful range of specialist shops, restaurants and bars in addition to Waitrose and Booths supermarkets and a leisure centre. Toft Cricket Club is 1.3 mile away and the town's schools are well regarded. Bexton Primary School is about 1.8 mile away.

### Mileage

Knutsford 1.4 miles - Wilmslow  
6.4 miles - Northwich 8.6 miles  
Manchester 18.2 miles - Chester  
31.2 miles

### Description

This property was constructed in the mid 1980s. It offers 595 square feet of accommodation on two floors with sealed unit double glazed windows and gas central heating. The house has been rented for a number of years and is now ready for a purchaser to appoint the accommodation to their own style and specification. Set back from the road in an elevated position the house has a sunny south westerly aspect at the rear. The rear garden is enclosed and made private by fencing and mature shrubs. A paved driveway to the side of the house will accommodate at least two cars.

### Energy Performance

A copy of the full Energy Performance Certificate is available upon request.

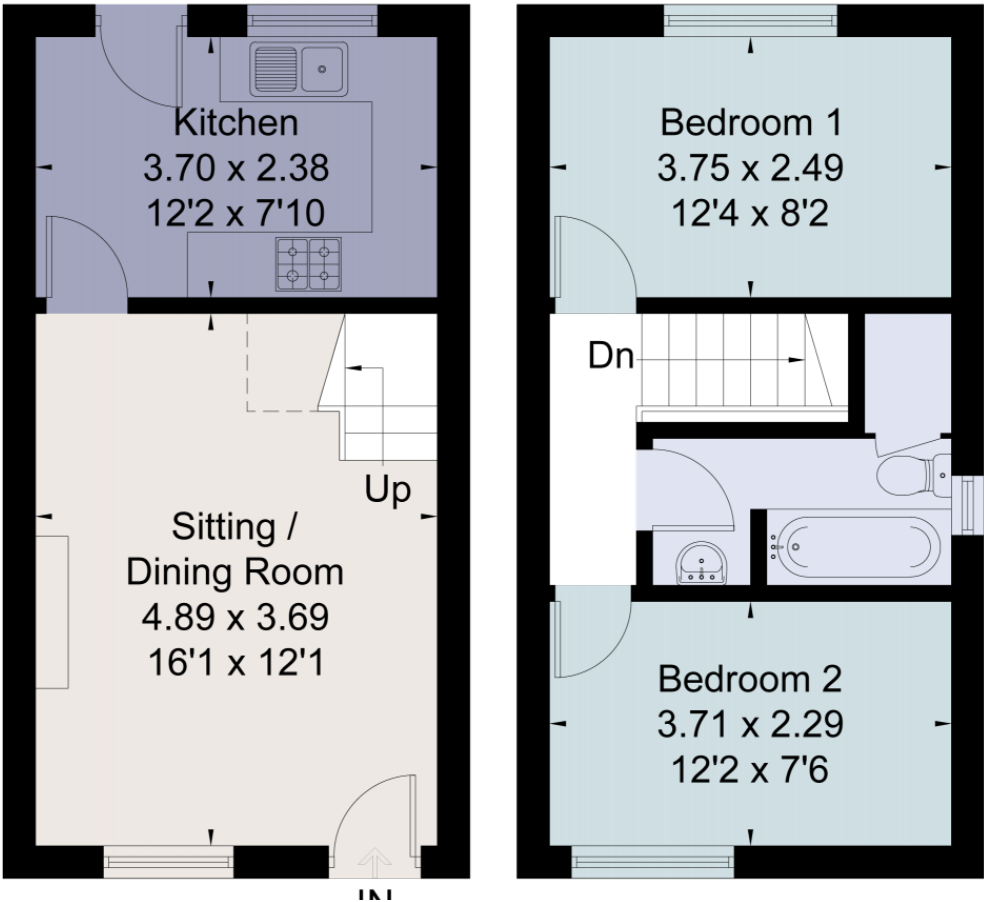
### Viewing

Strictly by appointment with Savills.

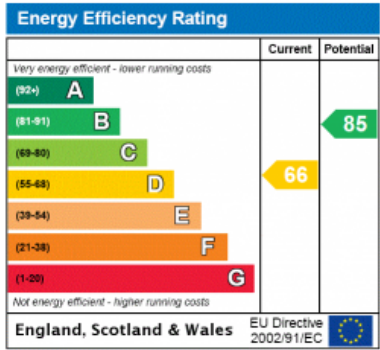








For identification only. Not to scale. © AUGUST2019



**Important notice** Savills, its clients and any joint agents give notice that 1: They are not authorised to make or give any representations or warranties in relation to the property either here or elsewhere, either on their own behalf or on behalf of their client or otherwise. They assume no responsibility for any statement that may be made in these particulars. These particulars do not form part of any offer or contract and must not be relied upon as statements or representations of fact. 2: Any areas, measurements or distances are approximate. The text, photographs and plans are for guidance only and are not necessarily comprehensive. It should not be assumed that the property has all necessary planning, building regulation or other consents and Savills have not tested any services, equipment or facilities. Purchasers must satisfy themselves by inspection or otherwise. Prepared in Fprintz by fourwalls-group.com

