



A beautifully presented raised ground floor apartment in this well maintained portered mansion block, with excellent entertaining space and west facing views over the communal garden.

Iverna Court, London, W8

£1,925,000 Share of Freehold



Local Information

Iverna Court is positioned on a quiet garden square just to the south of Kensington High Street. It is well placed for the many amenities the area has to offer which include plenty of highly regarded shops and restaurants, such as Wholefoods, The Kensington Ivy and Michelin Starred KitchenW8. There are also a number of highly regarded schools, excellent transport links (District & Circle Lines at High Street Kensington Tube Station) and both Kensington Gardens and Holland Park are close by.

About this property

A beautifully refurbished west facing three bedroom apartment on the raised ground floor of a red brick period mansion building overlooking the communal garden square. The apartment comprises of a west facing reception / dining room and fully fitted separate kitchen. There are also three bedrooms and two modern bathrooms one which is en-suite to the principal bedroom. Particular features are the almost 3m ceiling heights throughout all the principal rooms.

Tenure

Share of Freehold

Local Authority

Royal Borough of Kensington & Chelsea

Energy Performance

EPC Rating = To be confirmed

Viewing

All viewings will be accompanied and are strictly by prior arrangement through Savills Kensington Office.
Telephone: +44 (0) 20 7535 3300.



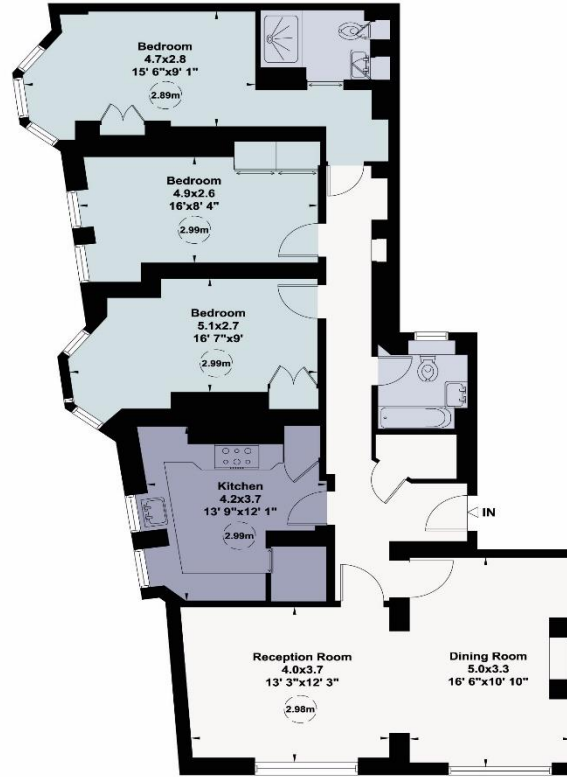


Iverna Court, W8

Gross internal area (approx.)
128 Sq m (1374 Sq ft)

For identification only. Not to Scale

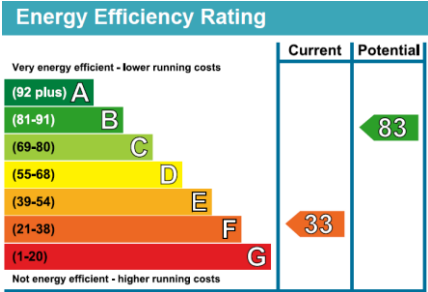
capital 020 8871 7722



Upper Ground Floor

Not to scale, for guidance only and must not be relied upon as a statement of fact. All measurements and areas are approximate only (and have been prepared in accordance with the current edition of the RICS Code of Measuring Practice).

Iverna Court, London, W8
Gross Internal Area 1374 sq ft, 128 m²



Important Notice Savills, its clients and any joint agents give notice that 1: They are not authorised to make or give any representations or warranties in relation to the property either here or elsewhere, either on their own behalf or on behalf of their client or otherwise. They assume no responsibility for any statement that may be made in these particulars. These particulars do not form part of any offer or contract and must not be relied upon as statements or representations of fact. 2: Any areas, measurements or distances are approximate. The text, photographs and plans are for guidance only and are not necessarily comprehensive. It should not be assumed that the property has all necessary planning, building regulation or other consents and Savills have not tested any services, equipment or facilities. Purchasers must satisfy themselves by inspection or otherwise. 20200914HHTV

