



A beautifully refurbished spacious one bedroom flat close to Kensington High Street

Cheniston Gardens, London, W8

£825,000 Leasehold (92 years remaining)



A perfect example of stylish one bedroom apartment •
Beautifully presented apartment • Exceptional floor to ceiling
height • Excellent living and entertaining space • Brilliant
location close to many excellent amenities

Local Information

Cheniston Gardens is a one way street situated south of Kensington High Street between Wrights Lane and Iverna Gardens. Kensington High Street underground station (District and Circle Line) is a short walk up Wrights Lane. The property is also well situated for access to Cromwell Road and the Motorways to the west (M3 and M4).

About this property

This wonderful lower ground floor flat forms part of a traditional period building in the heart of Kensington with the advantage of its own front door and good ceiling height.

The property has been stylishly refurbished throughout and offers excellent entertaining space.

The reception room is to the front of the flat and has space for small dining table with a modern fitted kitchen with extra larder storage and wine fridge located just off it. The bedroom is also of generous proportions with built in wardrobe space. There is also a large family bathroom with separate bath and shower.

There is also a large utility room located by the entrance which has the plumbing for the washing machine, boiler and further storage.

Tenure

Leasehold (92 years remaining)

Local Authority

Royal Borough of Kensington & Chelsea

Energy Performance

EPC Rating = E

Viewing

All viewings will be accompanied and are strictly by prior arrangement through Savills Kensington Office.
Telephone: +44 (0) 20 7535 3300.



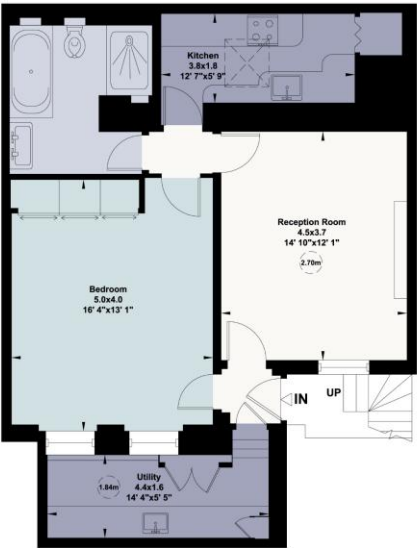


Cheniston Gardens, W8

Gross internal area (approx.)
70 Sq m (748 Sq ft)

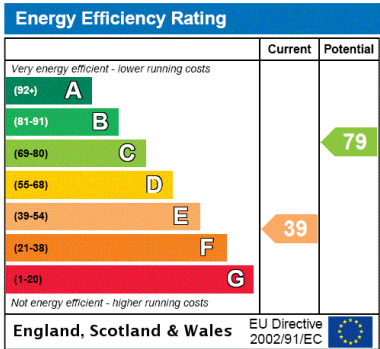
For identification only. Not to Scale

capital.020 8871 7722



Lower Ground Floor

Not to scale, for guidance only and must not be relied upon as a statement of fact. All measurements and areas are approximate and have been measured in accordance with the current edition of the BIP's Code of Measurement Practice



Important Notice Savills, its clients and any joint agents give notice that 1: They are not authorised to make or give any representations or warranties in relation to the property either here or elsewhere, either on their own behalf or on behalf of their client or otherwise. They assume no responsibility for any statement that may be made in these particulars. These particulars do not form part of any offer or contract and must not be relied upon as statements or representations of fact. 2: Any areas, measurements or distances are approximate. The text, photographs and plans are for guidance only and are not necessarily comprehensive. It should not be assumed that the property has all necessary planning, building regulation or other consents and Savills have not tested any services, equipment or facilities. Purchasers must satisfy themselves by inspection or otherwise. 20200911HHTV

