



17 Callcott Street

London, W8 7SU

savills

17 Calfcote Street

A period 3 bed house which has been beautifully refurbished to a contemporary standard with rear garden and roof terrace

Location

Calfcote Street runs North/ South, just south of Notting Hill Gate in the grid of streets known locally as Hillgate Village, with Uxbridge Street at its Northern end, and Hillgate place at it's southern end. Located between Kensington Palace Gardens and Holland Park, the property is as perfectly located for the green open spaces of the parks, as the transport links at Notting Hill Gate.

Equally, the shops, bars and restaurants of Westbourne Grove are just a very short walk away.

Description

A beautifully presented, newly refurbished, period 3 bed house, with flexible and well laid out accommodation. The property has been finished to a lovely contemporary standard with rear garden and roof terrace.

Benefitting from wooden floors throughout, Poggenpohl kitchen, neutral decoration and high specification tiled bathrooms.

The rear garden is elegantly landscaped to maximise space and light, and the roof terrace is decked.





Accommodation

- ♦ Freehold
- ♦ 3 bedrooms
- ♦ 2 reception rooms
- ♦ 2 bathrooms
- ♦ Garden
- ♦ Roof terrace
- ♦ 1382 approx sq ft
- ♦ 128.4 sq m

Energy Performance

A copy of the full Energy Performance Certificate is available upon request.

Viewing

Strictly by appointment with Savills.



Floor Plans

Approximate IPMS2 Floor Area = 128.4 sq m / 1382 sq ft

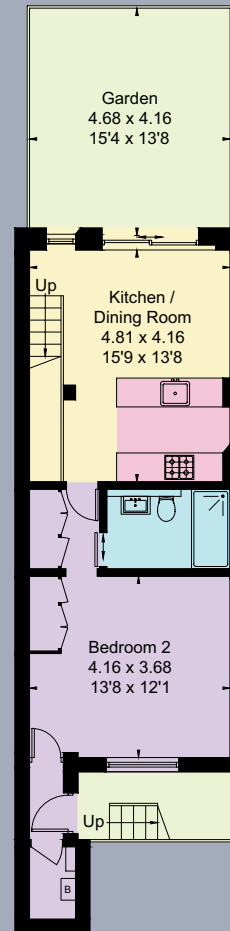
Limited Use Area = 0.4 sq m / 4 sq ft



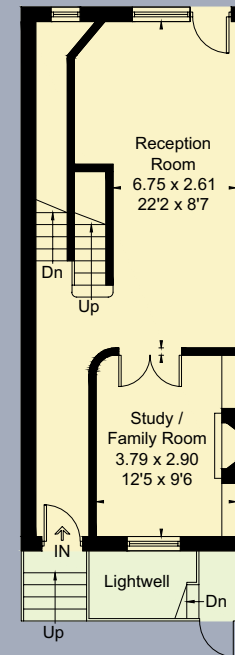
Savills Kensington
145 Kensington Church Street
London W8 4BN
kensington@savills.com
020 7535 3300

savills.co.uk

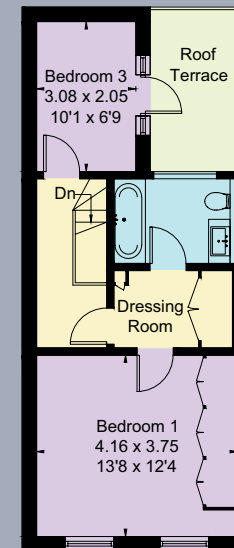
Savills, their clients and any joint agents give notice that: 1. They are not authorised to make or give any representations or warranties in relation to the property either here or elsewhere, either on their own behalf or on behalf of their client or otherwise. They assume no responsibility for any statement that may be made in these particulars. These particulars do not form part of any offer or contract and must not be relied upon as statements or representations of fact. 2. Any areas, measurements or distances are approximate. The text, images and plans are for guidance only and are not necessarily comprehensive. It should not be assumed that the property has all necessary planning, building regulation or other consents and Savills have not tested any services, equipment or facilities. Purchasers must satisfy themselves by inspection or otherwise. 190213AE



Lower Ground Floor



Ground Floor



First Floor



= Reduced head height below 1.5m

