



A well maintained two bedroom apartment to rent situated in the heart of Knightsbridge, a short walk away from the iconic Harrods.

Jefferson House, 11 Basil Street, London, SW3

£650 pw (£2,816.67 pcm) plus fees apply, Furnished

savills

- A spacious two bedroom apartment
- Two bathrooms one of which is ensuite
- Spacious reception room
- Stylish characterful block
- Available for immediate occupation and on a furnished basis

Local Information

Jefferson House is situated on Basil Street close to the flagship designer stores along Sloane Street, Harrods on Brompton Road and the green open spaces of Hyde Park.

The closest tube station is Knightsbridge (Piccadilly Line) located 0.1 miles to the nearest entrance on Hans Crescent.

About this property

A well proportioned two bedroom apartment with two bathrooms, one of which is en-suite.

The apartment also benefits from a spacious reception room and is available for immediate occupation and on a furnished basis.

Furnishing

Furnished

Local Authority

RBKC

Council Tax Band = G

Energy Performance

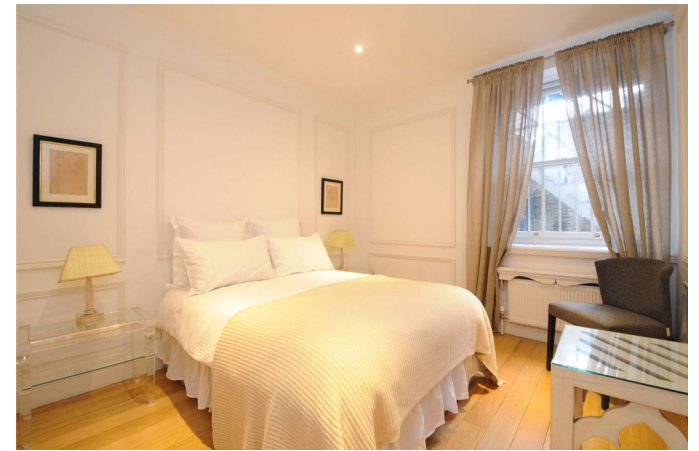
EPC Rating = D

Viewing

All viewings will be accompanied and are strictly by prior arrangement through Savills Knightsbridge Lettings Office.

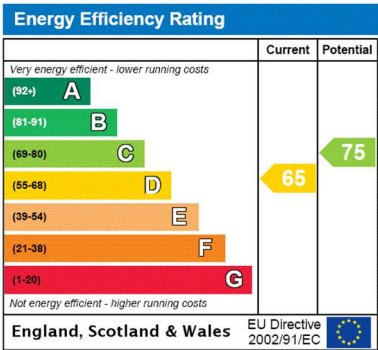
Telephone: +44 (0) 20 7584 8585.





Jefferson House, 11 Basil Street, London, SW3
Gross Internal Area 780 sq ft, 72.5 m²

Gilly Hayden
Knightsbridge Lettings
+44 (0) 20 7584 8585
ghayden@savills.com



Important notice Savills, their clients and any joint agents give notice that: 1. They are not authorised to make or give any representations or warranties in relation to the property either here or elsewhere, either on their own behalf or on behalf of their client or otherwise. They assume no responsibility for any statement that may be made in these particulars. These particulars do not form part of any offer or contract and must not be relied upon as statements or representations of fact. 2. Any areas, measurements or distances are approximate. The text, images and plans are for guidance only and are not necessarily comprehensive. It should not be assumed that the property has all necessary planning, building regulation or other consents and Savills have not tested any services, equipment or facilities. Prospective tenants must satisfy themselves by inspection or otherwise. Please note that the local area may be affected by aircraft noise, you should make your own enquiries regarding any noise within the area before you make any offer.

*There are different rules and fees for different tenancy types. For details of our fees and charges please go to Savills.co.uk/tenant-fees. For more detailed information read our applicant guide at savills.co.uk/applicant-guide.
Hard copy available on request. . 20210514LYPG

