



These brand newly refurbished short let apartments have various configurations and are available in one, two, three, four and five bedroom options.

**Gloucester Park Apartments, Ashburn Place, London, SW7**

£2,800 pw (£12,133.33 pcm) plus fees apply, Furnished

Available now

savills



Ultra-modern apartment block with exceptional services including 24 hour gym and security • Cinema room, conference rooms and gymnasium as well as underground parking options • Newly refurbished apartments with luxurious furnishings and fittings • VAT charged separately • All bills and services are included

### Local Information

The property is location 0.1 miles from Gloucester Road station, 0.5 miles to South Kensington station and 0.6 miles to Earls Court station.

### About this property

These brand newly refurbished apartments have various configurations and are available in one, two, three, four and five bedroom options. All of which are contemporary and fully refurbished with the latest equipment and modern configurations. Brand new designer furnishings compliment the general vibe in the development.

The building is located in South Kensington and boasts a gym, cinema, conference rooms as well as a 24 hour porter. Each apartment benefits from separate fully integrated modern kitchens, spacious living and dining areas as well as modern bedroom and bathroom suites with plenty of storage. Further benefits include climate control throughout, wide screen televisions, housekeeping service and linen/towel changes bi-weekly. All utility bills are included in the rent.

### Furnishing

Furnished

### Energy Performance

EPC Rating = To be confirmed

### Viewing

All viewings will be accompanied and are strictly by prior arrangement through Savills Knightsbridge Lettings Office. Telephone: +44 (0) 20 7584 8585.







**Gloucester Park Apartments, Ashburn Place, London, SW7**  
**Gross Internal Area** 1195 sq ft, 111 m<sup>2</sup>

**Nicole Dias**  
Knightsbridge Lettings  
**+44 (0) 20 7584 8585**  
nicole.dias@savills.com



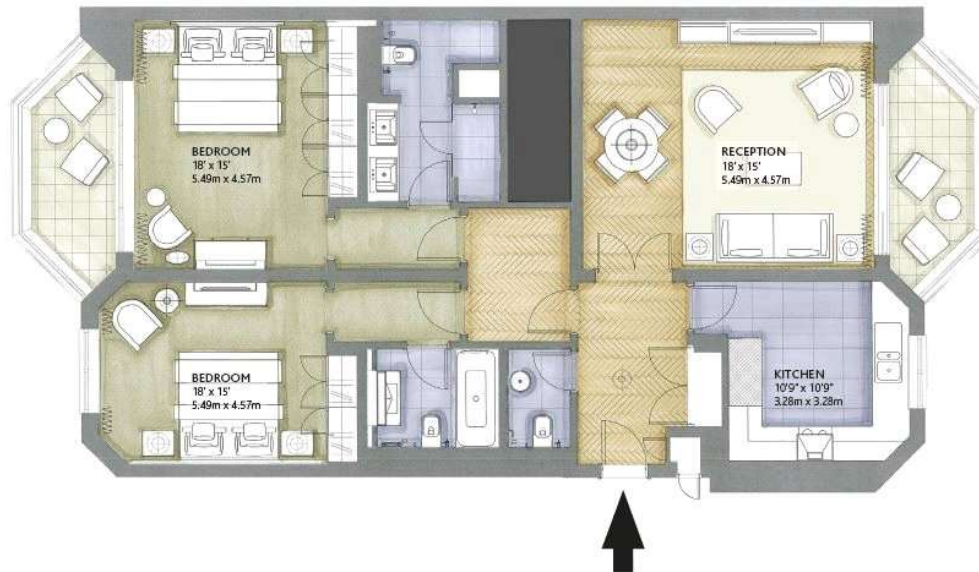
savills

savills.co.uk



## TWO BEDROOM APARTMENT

1195 sq.ft. | 111 m<sup>2</sup>



Please note all floor plan measurements and furniture placements are approximate and may not be to scale.

**Important notice** Savills, their clients and any joint agents give notice that: 1. They are not authorised to make or give any representations or warranties in relation to the property either here or elsewhere, either on their own behalf or on behalf of their client or otherwise. They assume no responsibility for any statement that may be made in these particulars. These particulars do not form part of any offer or contract and must not be relied upon as statements or representations of fact. 2. Any areas, measurements or distances are approximate. The text, images and plans are for guidance only and are not necessarily comprehensive. It should not be assumed that the property has all necessary planning, building regulation or other consents and Savills have not tested any services, equipment or facilities. Prospective tenants must satisfy themselves by inspection or otherwise. Please note that the local area may be affected by aircraft noise, you should make your own enquiries regarding any noise within the area before you make any offer.

\*There are different rules and fees for different tenancy types. For details of our fees and charges go to [Savills.co.uk/tenant-fees](https://www.savills.co.uk/tenant-fees). For more detailed information read our applicant guide at [savills.co.uk/applicant-guide](https://www.savills.co.uk/applicant-guide). Hard copy available on request. . 20200212LYPG

