



An impressive Grade II listed family townhouse in one of
Knightsbridge's premier garden squares.

Montpelier Square, London, SW7

£4,750 pw (£20,583.33 pcm) plus fees apply, Furnished, Part Furnished, Unfurnished
Available now



Grade II listed • access to garden square • 2 patios • terrace
• balcony • 3 reception rooms • 0.3 miles from Knightsbridge
Underground Station

Local Information

Montpelier Square lies to the north of Brompton Road and south of Hyde Park benefitting from the many amenities in Knightsbridge. The closest tube station is Knightsbridge (Piccadilly Line) located approximately 0.3 miles from the property, whilst South Kensington station (Piccadilly, Circle and District lines) is located approximately 0.6 miles from the property.

About this property

Montpelier Square offers spacious entertaining space and a charming westerly aspect over this prominent garden square. Accommodation includes 5 bedrooms, 6 bathrooms, 2 reception rooms, family room, kitchen/dining room, cloakrooms, terrace, vaults and use of the square gardens.

Furnishing

Furnished, Part Furnished, Unfurnished

Local Authority

Westminster

Energy Performance

EPC Rating = D

Viewing

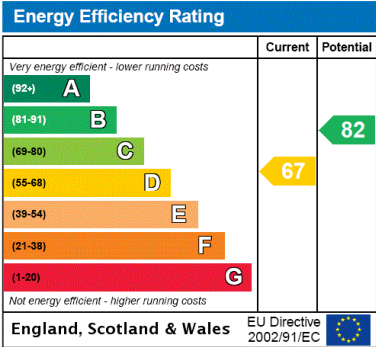
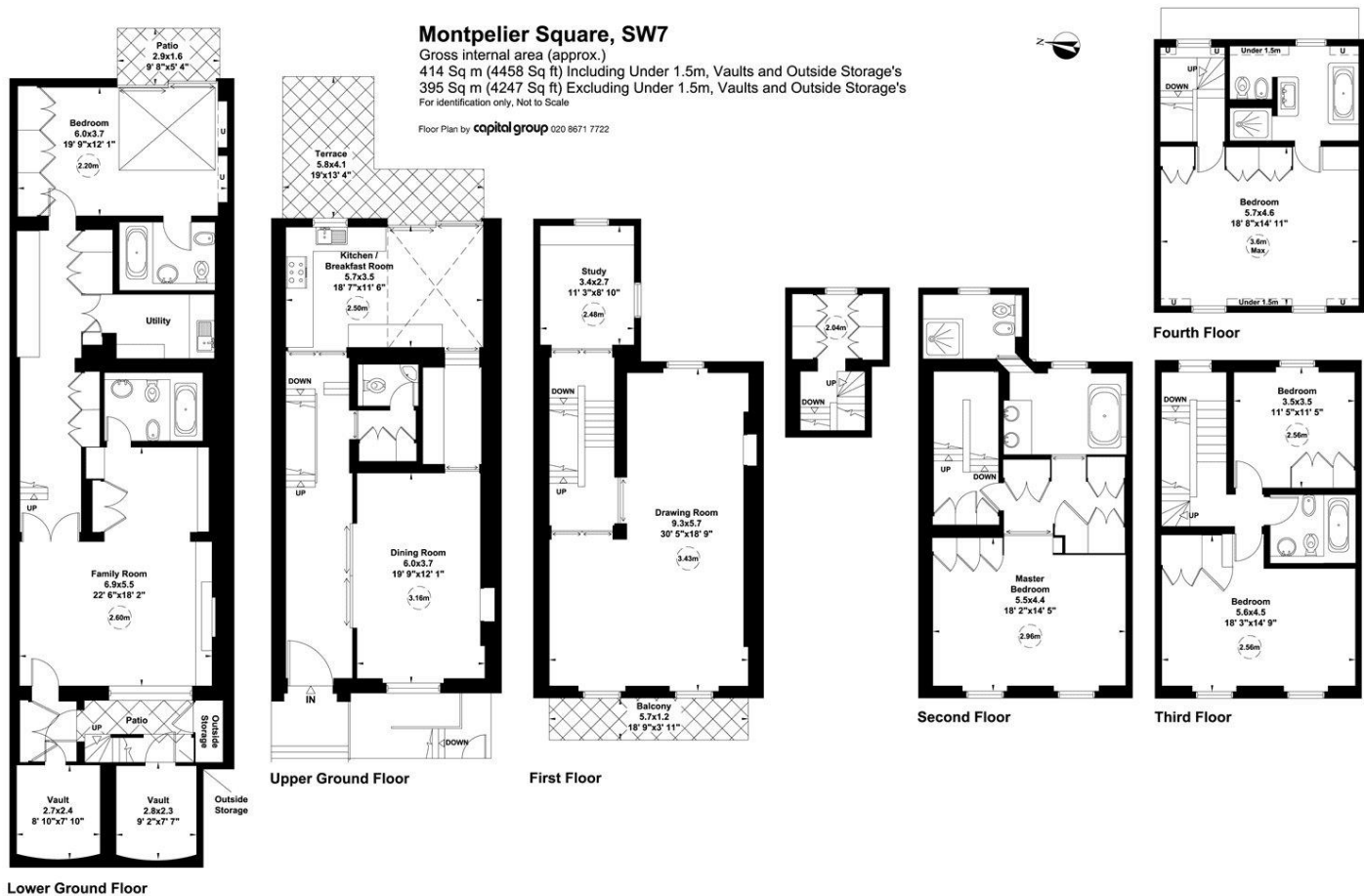
All viewings will be accompanied and are strictly by prior arrangement through Savills Knightsbridge Lettings Office. Telephone: +44 (0) 20 7824 9043.





Montpelier Square, London, SW7
Gross Internal Area 4458 sq ft, 414.2 m²

Hannah Norton
Knightsbridge Lettings
+44 (0) 20 7824 9043
hannah.norton@savills.com



Important notice Savills, their clients and any joint agents give notice that: 1. They are not authorised to make or give any representations or warranties in relation to the property either here or elsewhere, either on their own behalf or on behalf of their client or otherwise. They assume no responsibility for any statement that may be made in these particulars. These particulars do not form part of any offer or contract and must not be relied upon as statements or representations of fact. 2. Any areas, measurements or distances are approximate. The text, images and plans are for guidance only and are not necessarily comprehensive. It should not be assumed that the property has all necessary planning, building regulation or other consents and Savills have not tested any services, equipment or facilities. Prospective tenants must satisfy themselves by inspection or otherwise. Please note that the local area may be affected by aircraft noise, you should make your own enquiries regarding any noise within the area before you make any offer.

*There are different rules and fees for different tenancy types. For details of our fees and charges to go to Savills.co.uk/tenant-fees. For more detailed information read our applicant guide at savills.co.uk/applicant-guide. Hard copy available on request. . 20191118ADMC

