



A well maintained first floor apartment in this portered building in Knightsbridge with views over Hyde Park.

**Kingston House East, Prince's Gate, London, SW7**

£650 pw (£2,816.67 pcm) plus fees apply, Furnished



Bedroom • Shower room • Open plan reception room and kitchen • Guest cloakroom • 24 hour porterage • Communal garden

### Local Information

Kingston House East is located on the corner of Kensington Road and Ennismore Gardens directly opposite the beautiful open spaces of Hyde Park.

The closest tube station is Knightsbridge (Piccadilly Line) located 0.5 miles from the property.

### About this property

The apartment has a modern, open plan reception room and kitchen, a double bedroom ensuite shower room and guest cloakroom. The building benefits from 24 hour porterage and access to a large communal garden.

### Furnishing

Furnished

### Local Authority

Royal Borough of Kensington & Chelsea  
Council Tax Band = F

### Energy Performance

EPC Rating = C

### Viewing

All viewings will be accompanied and are strictly by prior arrangement through Savills Knightsbridge Lettings Office.

Telephone: +44 (0) 20 7584 8585.

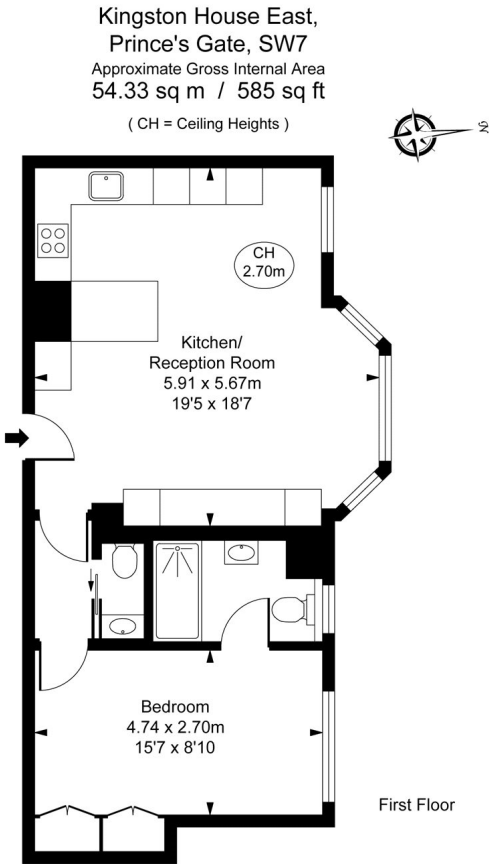




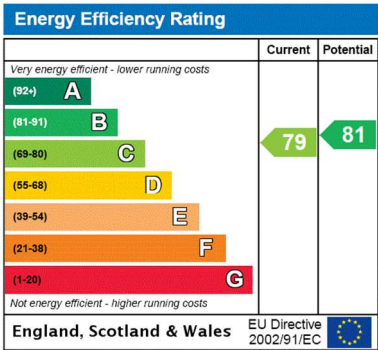


Kingston House East, Prince's Gate, London, SW7  
Gross Internal Area 585 sq ft, 54.3 m<sup>2</sup>

Nicole Dias  
Knightsbridge Lettings  
+44 (0) 20 7584 8585  
nicole.dias@savills.com



This plan is not to scale. It is for guidance and not for valuation purposes.  
All measurements and areas are approximate only, and have been prepared in accordance with the current edition of the RICS Code of Measuring Practice.  
© Fulham Performance



**Important notice** Savills, their clients and any joint agents give notice that: 1. They are not authorised to make or give any representations or warranties in relation to the property either here or elsewhere, either on their own behalf or on behalf of their client or otherwise. They assume no responsibility for any statement that may be made in these particulars. These particulars do not form part of any offer or contract and must not be relied upon as statements or representations of fact. 2. Any areas, measurements or distances are approximate. The text, images and plans are for guidance only and are not necessarily comprehensive. It should not be assumed that the property has all necessary planning, building regulation or other consents and Savills have not tested any services, equipment or facilities. Prospective tenants must satisfy themselves by inspection or otherwise. Please note that the local area may be affected by aircraft noise, you should make your own enquiries regarding any noise within the area before you make any offer.

\*There are different rules and fees for different tenancy types. For details of our fees and charges please go to Savills.co.uk/tenant-fees. For more detailed information read our applicant guide at savills.co.uk/applicant-guide.  
Hard copy available on request. . 20200701LYPG

