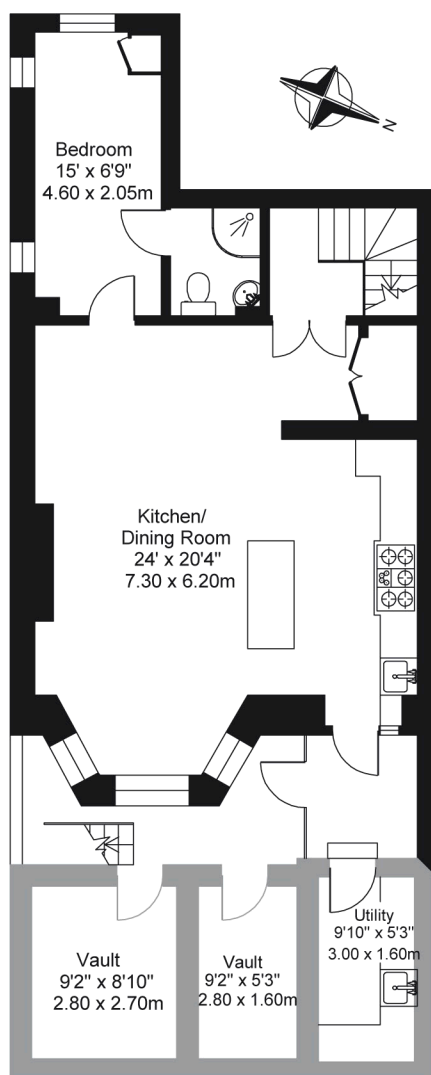


# 82 Cadogan Square Belgravia, London SW1

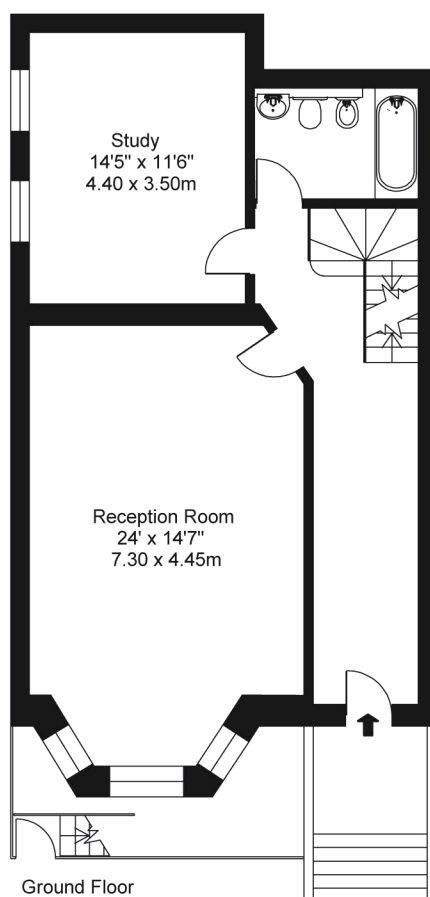
Approximate Gross Internal Floor Area

2,054 sq ft / 190.8 sq m

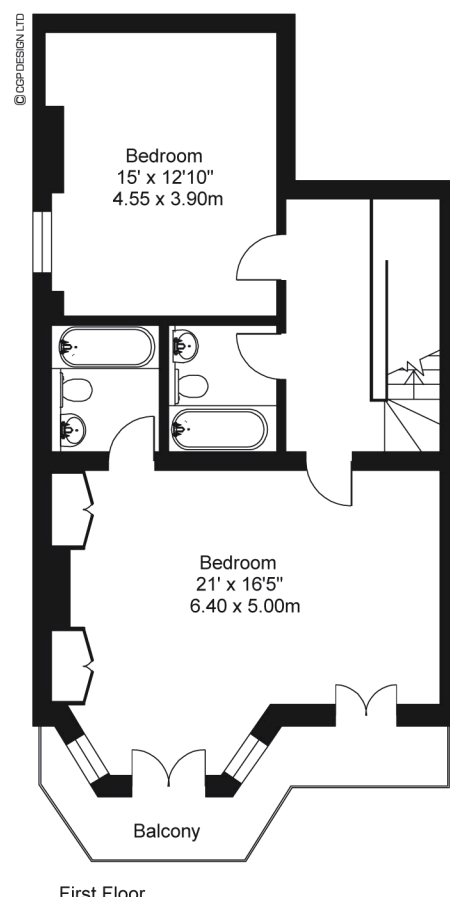
Plus utility and vaults 195 sq ft / 18.1 sq m



Lower Ground Floor



Ground Floor



First Floor

ILLUSTRATION FOR IDENTIFICATION PURPOSES ONLY

ALL MEASUREMENTS ARE MAXIMUM, AND INCLUDE WINDOW BAYS AND WARDROBES WHERE APPLICABLE  
THIS PLAN MUST NOT BE REPRODUCED BY ANY OTHER PERSON WITHOUT PERMISSION.