



A remarkably furnished and styled four bedroom house on a quiet residential street benefitting from nanny/guest room with private entrance.

**Montpelier Walk, London, SW7**

£2,500 pw (£10,833.33 pcm) plus fees apply. Furnished

**savills**



- Four bedroom three bathroom terraced house
- Front garden and rear private terrace
- Three bedrooms and two bathrooms on first and second floor
- Nanny/guest room with ensuite and private entrance
- Exquisitely furnished and interior styled
- Modern open plan kitchen/dining

#### Local Information

Montpelier Walk is located moments from the Brompton Road, home to the many amenities and superb restaurants in Knightsbridge whilst Hyde Park is also within easy reach.

The closest tube station is Knightsbridge (Piccadilly Line).

#### About this property

A modern recently refurbished four bedroom terraced house located on a quiet and charming residential street in the heart of Knightsbridge.

Offering four bedrooms, three bathrooms and two spacious receptions, this house has been lovingly refurbished with a modern integrated kitchen and immaculate finishes throughout.

Boasting a rarely found style and chicness rarely found in the rental market, the house also benefits from a front garden and rear terrace.

Available for immediate occupation on a furnished basis.

#### Furnishing

Furnished

#### Local Authority

City Of Westminster  
Council Tax Band = H

#### Energy Performance

EPC Rating = C

#### Viewing

All viewings will be accompanied and are strictly by prior arrangement through Savills Knightsbridge Lettings Office.

Telephone: +44 (0) 20 7584 8585.









Montpelier Walk, London, SW7  
 Gross Internal Area 1603 sq ft, 148.9 m²

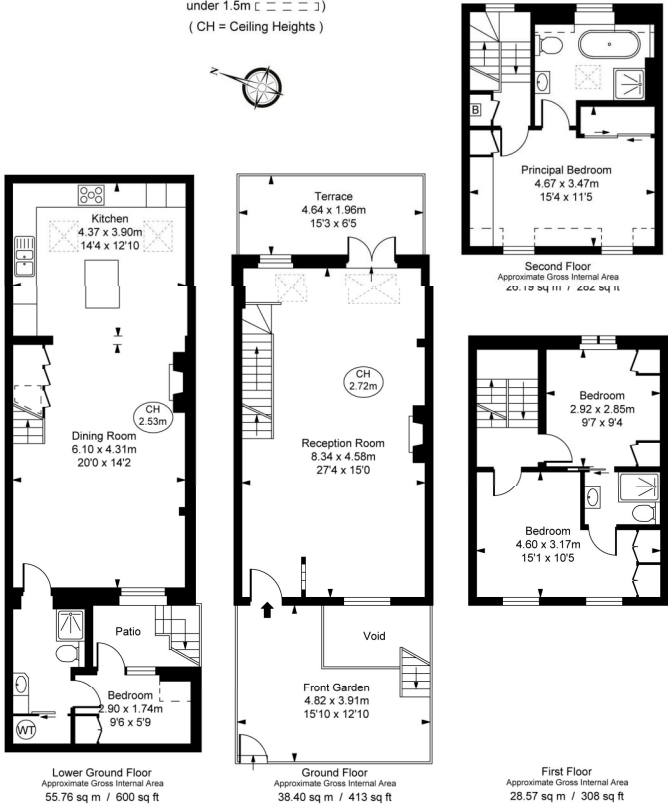
Gilly Hayden  
 Knightsbridge Lettings  
 +44 (0) 20 7584 8585  
 ghayden@savills.com



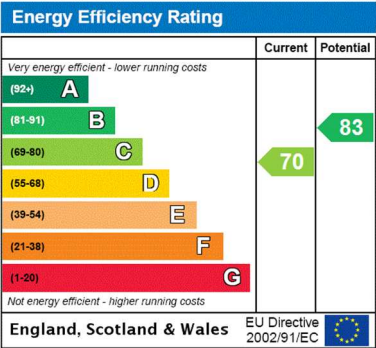
savills

savills.co.uk

Montpelier Walk, SW7  
 Approximate Gross Internal Area  
 148.92 sq m / 1,603 sq ft  
 ( Including restricted height  
 under 1.5m □ □ □ □ )  
 ( CH = Ceiling Heights )



This plan is not to scale. It is for guidance and not for valuation purposes.  
 All measurements and areas are approximate only, and have been prepared in accordance with the current edition of the RICS Code of Measuring Practice.  
 © Fulham Performance



**Important notice** Savills, their clients and any joint agents give notice that: 1. They are not authorised to make or give any representations or warranties in relation to the property either here or elsewhere, either on their own behalf or on behalf of their client or otherwise. They assume no responsibility for any statement that may be made in these particulars. These particulars do not form part of any offer or contract and must not be relied upon as statements or representations of fact. 2. Any areas, measurements or distances are approximate. The text, images and plans are for guidance only and are not necessarily comprehensive. It should not be assumed that the property has all necessary planning, building regulation or other consents and Savills have not tested any services, equipment or facilities. Prospective tenants must satisfy themselves by inspection or otherwise. Please note that the local area may be affected by aircraft noise, you should make your own enquiries regarding any noise within the area before you make any offer.

\*There are different rules and fees for different tenancy types. For details of our fees and charges please go to Savills.co.uk/tenant-fees. For more detailed information read our applicant guide at savills.co.uk/applicant-guide.  
 Hard copy available on request. . 20210630ANDZ

