

A BEAUTIFULLY-PRESENTED TWO BEDROOM FLAT WITH THE BENEFIT OF A BALCONY

BEAUFORT GARDENS, LONDON SW3

Guide Price £1,999,950

- Beautifully light and spacious reception room
- Kitchen with built-in appliances
- Modern fixtures and solid marble shower rooms
- West-facing balcony
- High ceilings and storage facilities throughout

Knightsbridge Flats

William Hughes-Ward
william.hughesward@savills.com
+44 (0) 20 7581 5234

savills.co.uk

Description

This light and well-proportioned first floor property features a spacious reception room with parquet, leading to a delightful west-facing balcony. The master bedroom benefits from a beautiful marble en suite shower room, and the additional bedroom has easy access to its own shower room.

In addition, the property features a kitchen with fully integrated Gaggenau appliances, built-in storage throughout and wonderfully high ceilings.

Tenure

Leasehold (approximately 120 years remaining)

Local Area

Beaufort Gardens is located in an excellent central location, combining the quietness of a tree-lined cul-de-sac with being exceptionally well placed for the various amenities of Knightsbridge, with the iconic Harrods department store, just 0.1 miles away on Brompton Road. Transport connections include the Piccadilly Line from Knightsbridge (approx. 0.4 miles away) and the District and Circle lines from South Kensington (approx. 0.6 miles away)

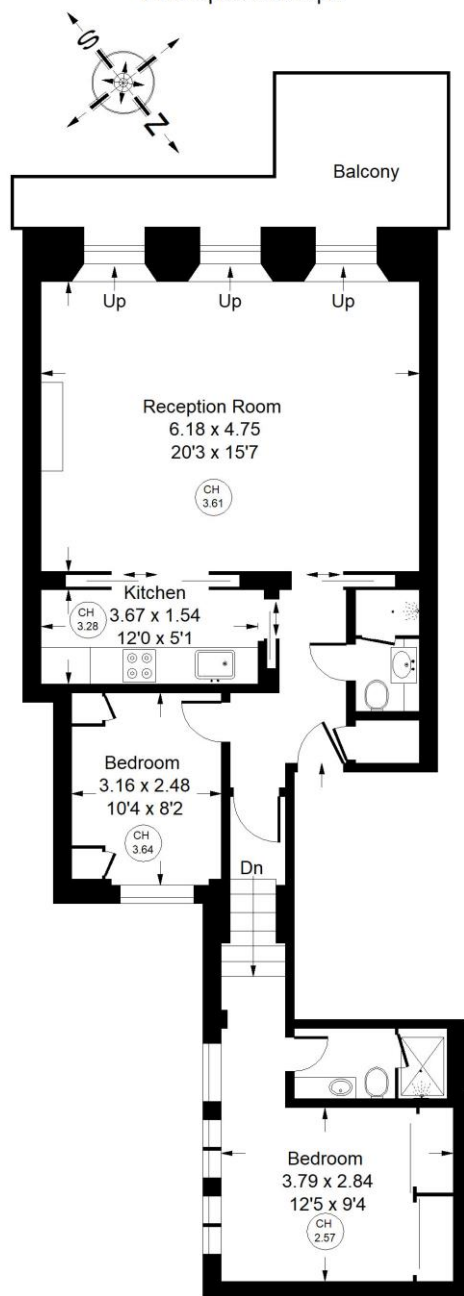
savills

FLOORPLANS

Gross internal area: 802 sq ft, 74.5 m²

Beaufort Gardens, SW3

Approx. Gross Internal Area
74.5 sq m / 802 sq ft



First Floor

Whilst every attempt has been made to ensure the accuracy of the floor plan, measurements are approximate and not to scale.
No guarantee is given on the total square footage of the property quoted on the plan. Figures given are for guidance.
Plan is for illustration purposes only, not to be used for valuations.

Savills, their clients and any joint agents give notice that: 1. They are not authorised to make or give any representations or warranties in relation to the property either here or elsewhere, either on their own behalf or on behalf of their client or otherwise. They assume no responsibility for any statement that may be made in these particulars. These particulars do not form part of any offer or contract and must not be relied upon as statements or representations of fact. 2. Any areas, measurements or distances are approximate. The text, images and plans are for guidance only and are not necessarily comprehensive. It should not be assumed that the property has all necessary planning, building regulation or other consents and Savills have not tested any services, equipment or facilities. Purchasers must satisfy themselves by inspection or otherwise. 20190613EBEL