



Ormonde Place

BELGRAVIA SW1



A charming three bedroom house with a 42ft garden and an integral garage in a private residential square close to Sloane Square

This delightful Georgian style house offers accommodation of approximately 1435 sqft over three floors. It has a sensible layout and is well presented throughout. There may be an opportunity for the incoming purchaser to extend the house subject to obtaining the usual consents (see separate report prepared by Savills Planning).

Ormonde Place is situated off the southern end of Bourne Street close to Pimlico Green which is known for its popular shops and restaurants including Daylesford as well as the Farmers Market. The nearest tube station is Sloane Square (District and Circle Lines) 0.2 miles away and the nearest railway station is Victoria Station 0.7 miles away.

Accommodation

- Entrance hall
- Kitchen/dining room
- First floor drawing room
- 3 Bedrooms
- 2 Bathrooms (1 en suite)
- Cloakroom
- Garage
- 42ft Rear garden
- Air conditioning on the first and second floors

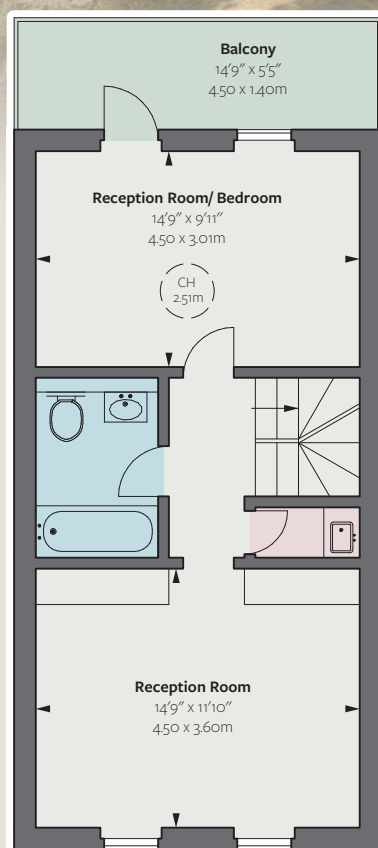
Freehold

Local Authority
City of Westminster
Price on application

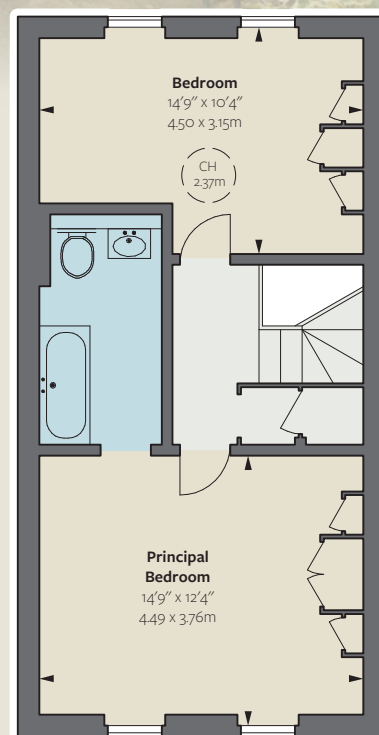




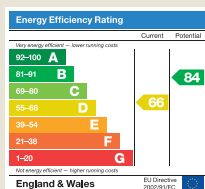
Ground Floor



First Floor



Second Floor



A copy of the full energy performance certificate is available upon request

APPROXIMATE GROSS INTERNAL AREA
1,435 sq ft / 133.31 sq m

