

# BELLE VUE HOUSE

92 CHEYNE WALK | LONDON SW10





*Cheyne Walk is an historic street in Chelsea in the Royal Borough of Kensington and Chelsea.*



*In Cheyne Walk is a magnificent, coloured statue of Thomas More positioned in front of Old Church.*



*The Albert Bridge is a road bridge over the River Thames in West London, connecting Chelsea on the north bank to Battersea on the south bank.*

C H E Y N E   W A L K   L O N D O N   S W 1 0





## WONDERFUL GRADE II LISTED HOUSE OVERLOOKING THE RIVER WITH A LARGE GARDEN AND GARAGING.

This fine Grade II listed late Georgian house dates back to c.1771. It is constructed of painted brown brick under a clay tiled mansard roof, and is arranged over 3 storeys plus a basement. 5 windows (including a 3 window splay bay to the centre and Palladian windows to the side) enjoy glorious views over the River Thames.

The house benefits from some extraordinarily grand lateral reception rooms, all of which have been restored to an exacting standard in keeping with the style and period of the house. At the rear, there is a magnificent garden together with garaging for 3 cars.





designed



## HISTORY

Belle Vue House - the name means 'beautiful view' - dates from c.1771. The plan consists of three parts, a centre portion with large bay windows back and front, and two wings - that on the east being occupied by the hall and staircase, and that to the west having an elliptical arch in the front and back wall, now [1913] filled in with a window and a curved fanlight above. This latter part, which is vaulted in plaster on the ground floor, is supposed to have been an open archway to the old stables, once found at the rear.

The house is built of stock brick, which in course of time has become a good colour. The bay windows are taken the full height of the house (three storeys) and finished with a plain stone parapet. There is a well-designed front doorway with two flanking windows connected over the door by a glass fanlight which fills in the whole space beneath an elliptical arch. The windows and door are separated by columns. An arched iron bar of great width spans the entrance gate and adds to the effect. The windows of the wings on the first and second floors are of three lights, the centre one in each case being arched and the mullions having pilasters.









The interior has been somewhat altered from its original decoration. The architraves to doors and windows are enriched with a Greek fret and the old staircase remains with its carved consoles. The chimney pieces are now mostly early Victorian, but an original carved frieze and cornice of one is preserved in the hall, and two of simpler design on the first floor.

Cheyne Walk, which takes its name from William, Lord Cheyne, who owned the manor of Chelsea until 1712, has probably known more famous residents per square metre than any other thoroughfare in London. Keith Richards lived at No.3 and his fellow Rolling Stone, Mick Jagger, was at No.48 in 1968 with Marianne Faithfull. David Lloyd George lived at No. 10, in a house later occupied by the cartoonist, Gerald Scarfe; while Ralph Vaughan Williams lived at No.13. The Pre-Raphaelite painter, Dante Gabriel Rossetti lived at No.16, where he was banned from keeping peacocks because they made too much noise. [He bought a wombat instead.] Nos. 19-26 cover the site of Henry VIII's ancient manor house, afterwards the residence of Sir Hans Sloane. James Whistler lived at various houses in Cheyne Walk; and the American novelist, Henry James, spent his last years at No.21. Sir Marc Brunel, who designed the Thames Tunnel, lived at No.98. J.M.W. Turner died at No.119, where he had rented rooms under the name of 'Puggy' Booth, muttering 'the sun is God'. After leaving university, the suffragette, Sylvia Pankhurst lived at No.120. The footballer, George Best, once had a flat in the same house.

Most of the houses on Cheyne Walk date from the 18th century but the riverside road also plays host to the most upmarket houseboat moorings in the capital.

With this calibre of property, it's no surprise to discover that daily life on this particular stretch of the Thames embankment still remains today like nowhere else in London.

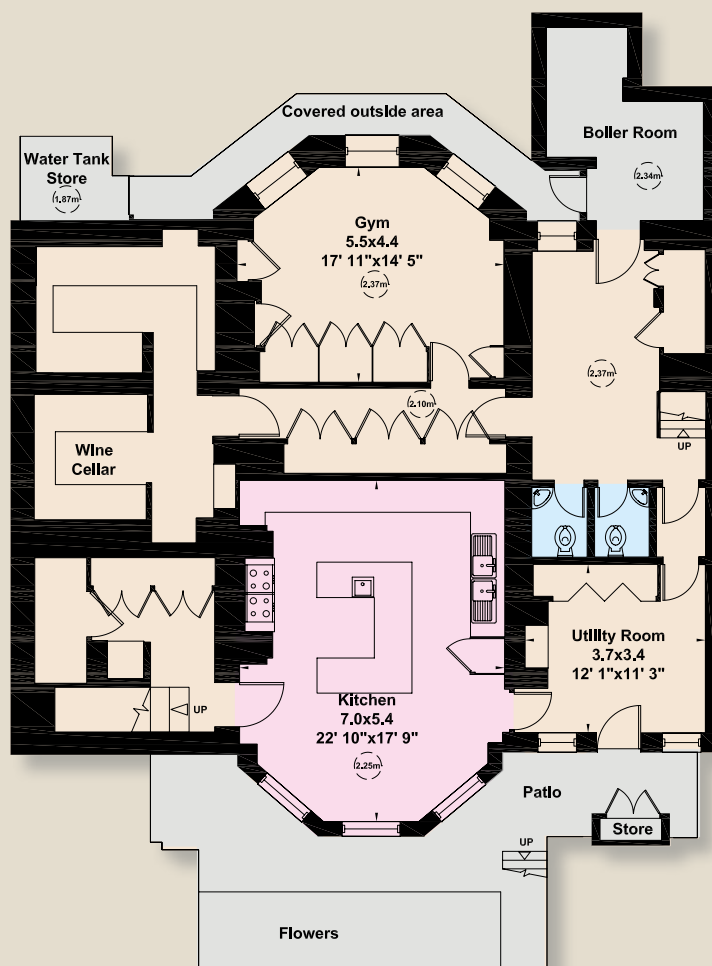






## ACCOMMODATION

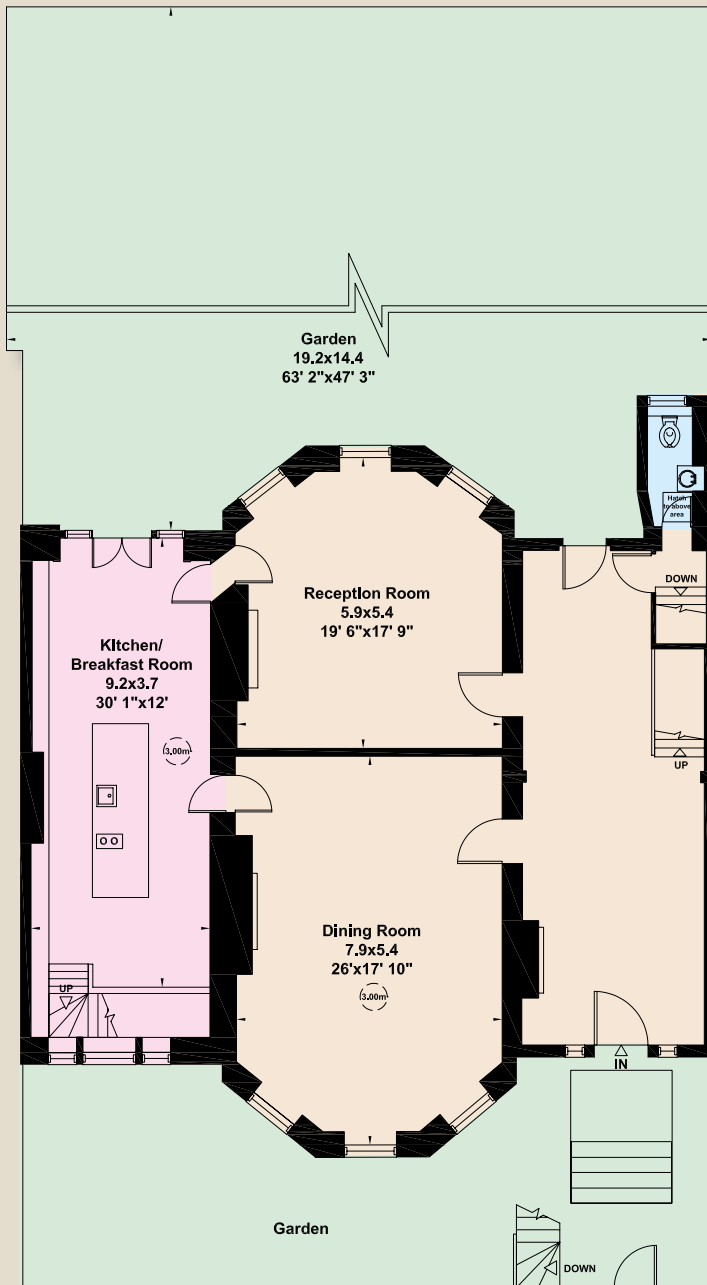
First floor double drawing room | Dining room | Library | Sitting room | TV room | Kitchen/breakfast room  
Potentially 4/5 bedrooms | Gym | Wine cellars | 60 ft garden | 3 garages



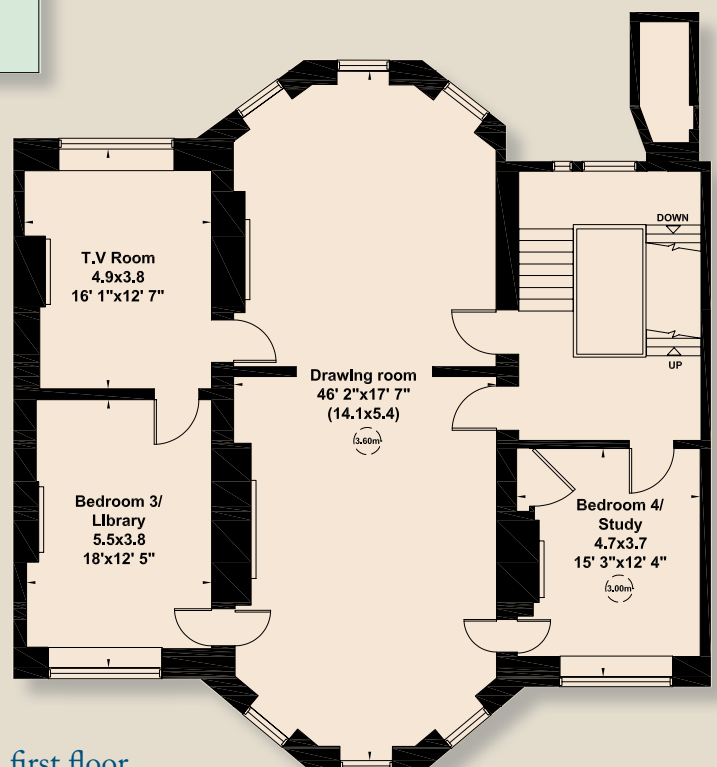
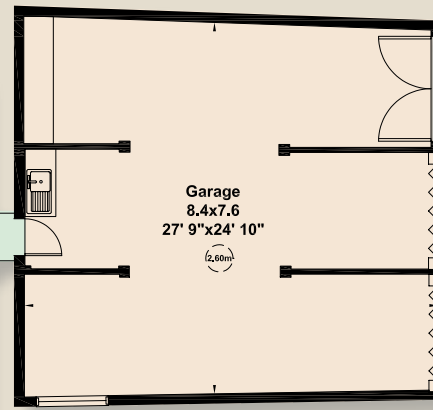
lower ground floor

Approximate gross internal area = 779 square metres - 8,386 square feet  
(including under 1.5m & garage)  
746 square metres - 8,034 square feet  
(excluding under 1.5m including garage)  
716 square metres - 7,703 square feet  
(excluding garage)

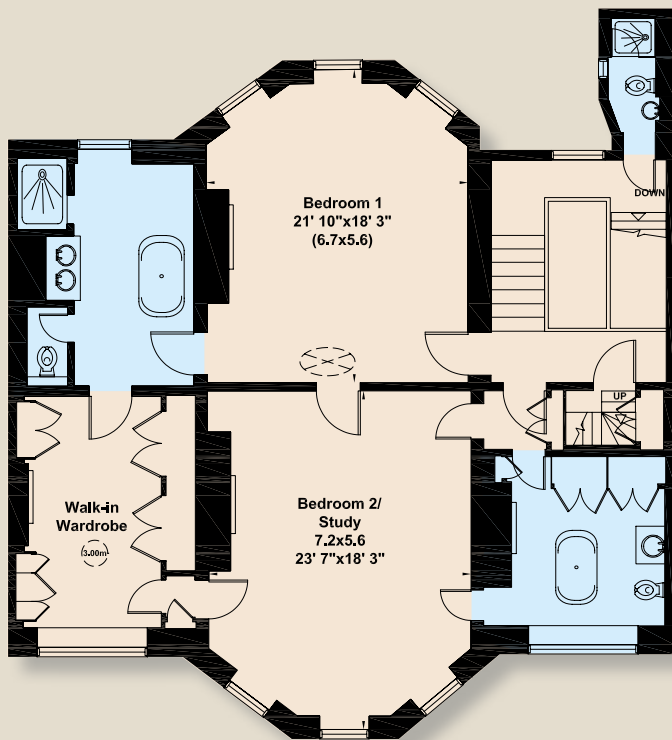
92  
CHEYNE WALK



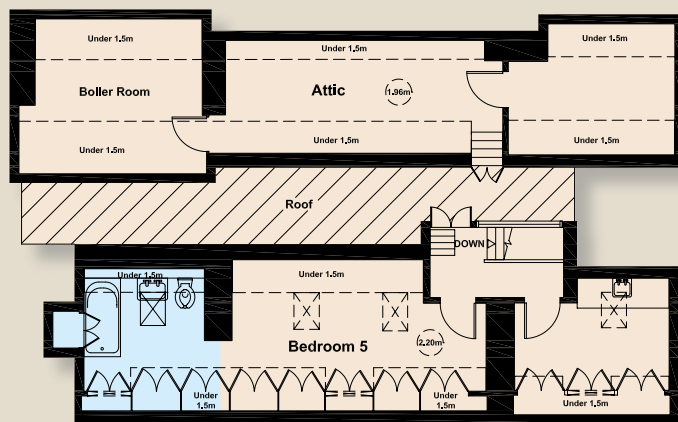
ground floor



first floor



second floor



third floor









Cheyne Walk runs west from Oakley Street towards the junction with Edith Grove in an historic part of Chelsea. The house is located just west of the junction with Beaufort Street. The wide and varied shopping, transport and restaurant facilities on Kings Road are nearby. Across the river, via Battersea Bridge, the wide open spaces of Battersea Park with its boating lake, tennis courts and athletic ground are also within easy reach.

# location





## TERMS

TENURE: FREEHOLD

LOCAL AUTHORITY: ROYAL BOROUGH OF KENSINGTON & CHELSEA

PRICE UPON APPLICATION



Viewing: Strictly by appointment with Savills.

#### Important notice

Savills, their clients and any joint agents give notice that: 1: They are not authorised to make or give any representations or warranties in relation to the property either here or elsewhere, either on their own behalf or on behalf of their client or otherwise. They assume no responsibility for any statement that may be made in these particulars. These particulars do not form part of any offer or contract and must not be relied upon as statements or representations of fact. 2: Any areas, measurements or distances are approximate. The text, photographs and plans are for guidance only and are not necessarily comprehensive. It should not be assumed that the property has all necessary planning, building regulation or other consents and Savills have not tested any services, equipment or facilities. Purchasers must satisfy themselves by inspection or otherwise. 16/09/26 NDK 340451

Brochure and Photography by **capital group** 020 8671 5448

Savills Knightsbridge  
ndekeyzer@savills.com  
020 7581 5234

Savills Sloane Street  
sloanestreet@savills.com  
020 7730 0822  
savills.co.uk

**savills**



