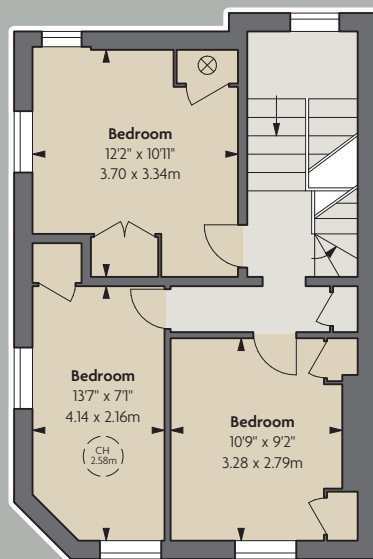
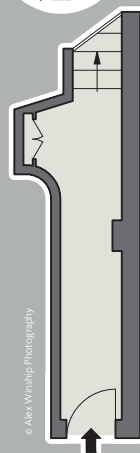




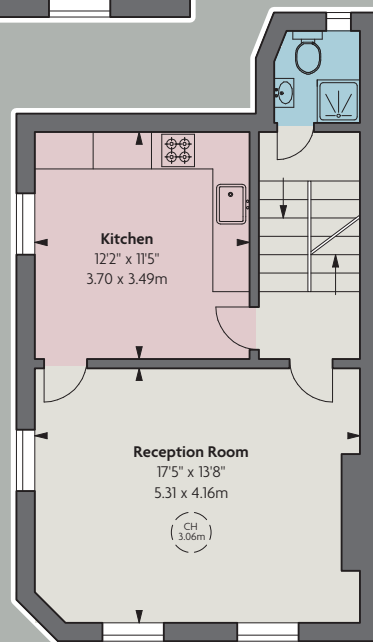
CHELSEA
MANOR
STREET
SW3 5QD



SECOND FLOOR

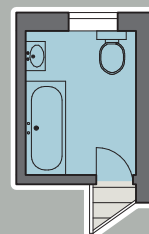


GROUND FLOOR ENTRANCE



FIRST FLOOR

Approximate Gross Internal Area:
1,062 sq ft
98.66 sq m



SECOND FLOOR HALF LANDING



A charming upper floor maisonette arranged above a shop, with its own private entrance. It occupies a corner position, with views towards Chelsea Manor Street and Oakley Gardens.

The flat would make for an ideal home. It is situated in this very sought-after enclave of Old Chelsea, just to the south of the King's Road and near to the River.

ACCOMMODATION

- Entrance hall
- 3 Bedrooms
- Bathroom
- Shower room
- Kitchen / breakfast room
- Reception room

TERMS

Guide Price:
£1,500,000

Tenure: A new 125 year lease will be issued

Service Charge:
£2,439 pa (excluding building insurance)

Local Authority:
Royal Borough of Kensington and Chelsea

Council Tax: Band C

EPC: D