



A beautifully refurbished and well proportioned first floor flat in this prime Knightsbridge address

Ennismore Gardens, London, SW7

£1,575,000 Share of Freehold

savills

- Entrance hall
- Reception room
- Kitchen/dining room
- Bedroom
- Bathroom
- Terrace
- Porter

Local Information

Ideally located in just 0.3 miles from London's Hyde Park, Ennismore Gardens is an immaculate garden square with near immediate access the numerous shops, restaurants and designer boutiques of the Brompton Road (0.4 miles) and Sloane Street (0.7 miles). There are a number of highly regarded schools and popular department stores nearby, including Harrods, as well as famous museums such as the V&A. The closest tube station is South Kensington, 0.6 miles away (Piccadilly and District and Circle Lines)

About this property

This elegantly designed flat benefits from an open plan reception room, kitchen and dining room, a bedroom with excellent built in storage, a separate bathroom and a wonderful terrace. The flat further benefits from underfloor heating and the building is serviced by a lift and a porter.

Tenure

Share of Freehold
(LH expiring 21 December 2116)

Local Authority

City of Westminster

Energy Performance

EPC Rating = D

Viewing

All viewings will be accompanied and are strictly by prior arrangement through Savills Knightsbridge Office.
Telephone: +44 (0) 20 7581 5234.



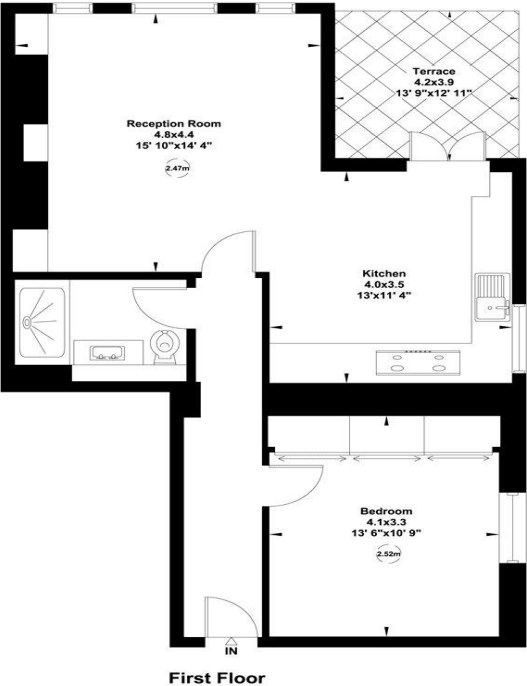



Ennismore Gardens, London, SW7
Gross Internal Area 669 sq ft, 62 m²

Ennismore Gardens, SW7

Gross internal area (approx.)
62 Sq m (669 Sq ft)
For identification only. Not to Scale

Floor Plan by capital group 020 8671 7722



Energy Efficiency Rating		
	Current	Potential
Very energy efficient - lower running costs		
(92+) A		
(81-91) B		
(69-80) C		
(55-68) D	62	74
(39-54) E		
(21-38) F		
(1-20) G		
Not energy efficient - higher running costs		
England, Scotland & Wales	EU Directive 2002/91/EC	

Important Notice Savills, its clients and any joint agents give notice that 1: They are not authorised to make or give any representations or warranties in relation to the property either here or elsewhere, either on their own behalf or on behalf of their client or otherwise. They assume no responsibility for any statement that may be made in these particulars. These particulars do not form part of any offer or contract and must not be relied upon as statements or representations of fact. 2: Any areas, measurements or distances are approximate. The text, photographs and plans are for guidance only and are not necessarily comprehensive. It should not be assumed that the property has all necessary planning, building regulation or other consents and Savills have not tested any services, equipment or facilities. Purchasers must satisfy themselves by inspection or otherwise. 3: Should you be referred to SPF Private Clients to arrange your mortgage, Savills will receive a referral fee. In 2018 the average referral fee that was received was £1,369. Should you be referred to Prime Purchase, we will receive £1000 of the initial registration charge and a further percentage of the fee charged at Exchange, which on average, amounted to £3,542 in 2018. 20200615EBEL Photos and floorplan produced 1st August 2016

