



An immaculately presented two bedroom apartment in an ideal Belgravia location

Belgravia Court, 33 Ebury Street, London, SW1W

£1,350,000 Leasehold (133 years remaining)



- Spacious and bright reception room with dining area
- Separate modern kitchen
- Two immaculate double bedrooms
- Bathroom and shower room
- Third floor with lift, porter and long lease

Local Information

Belgravia Court is a popular apartment block located on Ebury Street, situated between Lower Belgrave Street and Eccleston Street, providing easy access to the amenities of Elizabeth Street, including local eateries, bars and boutique shopping. Sloane Square and Kings Road are also within a short walk. Transport links include Sloane Square (0.7 miles) and Victoria (0.3 miles) Underground stations.

About this property

This stunning, newly refurbished apartment comprises a spacious reception room with dining area, and separate well-appointed kitchen. The two well-proportioned bedrooms are both beautifully presented and offer a wealth of built-in storage, whilst the property also boasts a luxurious modern bathroom and separate shower room. Belgravia Court is a quiet, well-maintained block, and the apartment itself enjoys open front-facing views of the area.

Tenure

Leasehold (133 years remaining)

Local Authority

City Of Westminster

Energy Performance

EPC Rating = D

Viewing

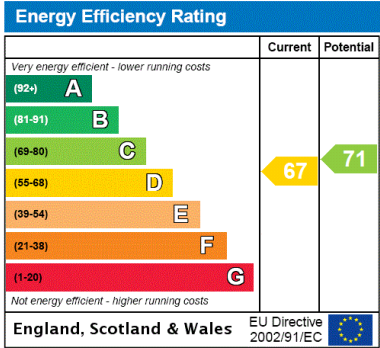
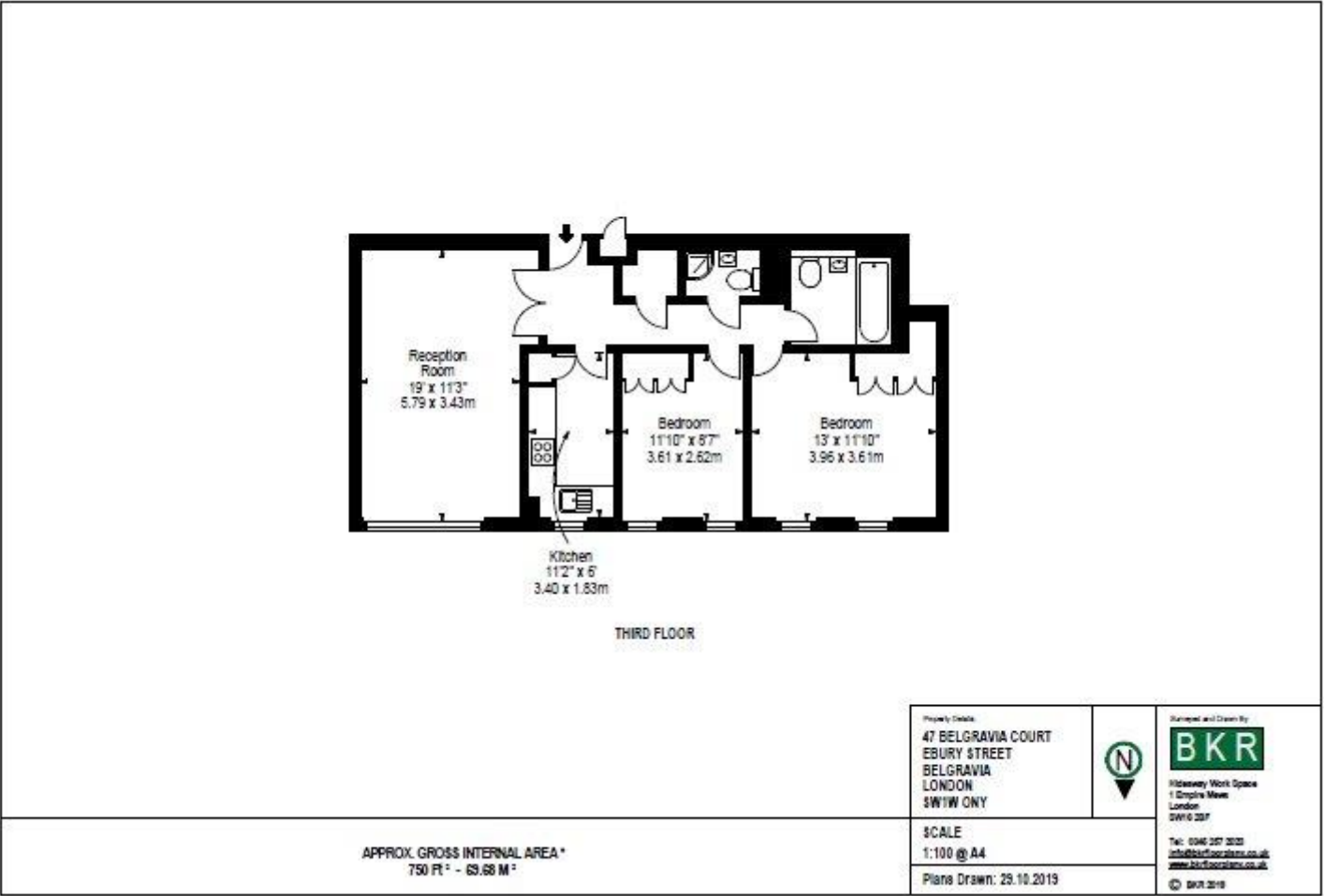
All viewings will be accompanied and are strictly by prior arrangement through Savills Knightsbridge Office.
Telephone: +44 (0) 20 7581 5234.





Belgravia Court, 33 Ebury Street, London, SW1W
Gross Internal Area 750 sq ft, 69.7 m²

William Hughes-Ward
Knightsbridge
+44 (0) 20 7581 5234
tmoore@savills.com



Important Notice Savills, its clients and any joint agents give notice that 1: They are not authorised to make or give any representations or warranties in relation to the property either here or elsewhere, either on their own behalf or on behalf of their client or otherwise. They assume no responsibility for any statement that may be made in these particulars. These particulars do not form part of any offer or contract and must not be relied upon as statements or representations of fact. 2: Any areas, measurements or distances are approximate. The text, photographs and plans are for guidance only and are not necessarily comprehensive. It should not be assumed that the property has all necessary planning, building regulation or other consents and Savills have not tested any services, equipment or facilities. Purchasers must satisfy themselves by inspection or otherwise. 20200630EBEL

