

# FIRST STREET LONDON SW3



An immaculate and beautifully decorated two bedroom period townhouse bordering Chelsea and Knightsbridge. The house enjoys a central position on this quiet one way street and has a east facing patio garden.

savills





The flow of accommodation is excellent, with the house offering well balanced bedroom and entertaining space. Designed with open plan living in mind, the kitchen/dining room on the lower ground floor leads out on to the patio through a study area. The ground floor reception is both spacious and flexible with formal sitting space and a snug with integrated TV unit. There are two impressive en suite bedrooms and a separate bathroom overlooking the garden to the rear.

Located between Milner Street and Walton Street, the property is a short distance to the Knightsbridge shops and close to the bars, cafes and restaurants this popular area has to offer.

#### Accommodation and Amenities

Principal Bedroom Suite ♦ Bedroom 2 Suite ♦ Bathroom ♦ Sitting Room ♦ TV Room ♦ Dining Room ♦ Kitchen ♦ Study ♦ Cloakroom ♦ Vault/storage ♦ Patio Garden ♦ EPC=D

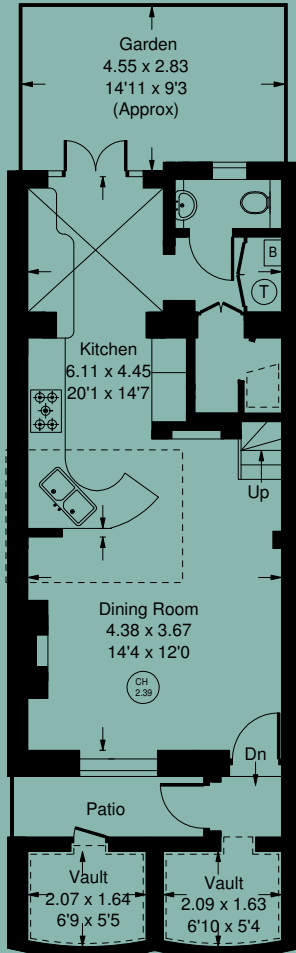
Price on Application  
Freehold  
Royal Borough of Kensington and Chelsea



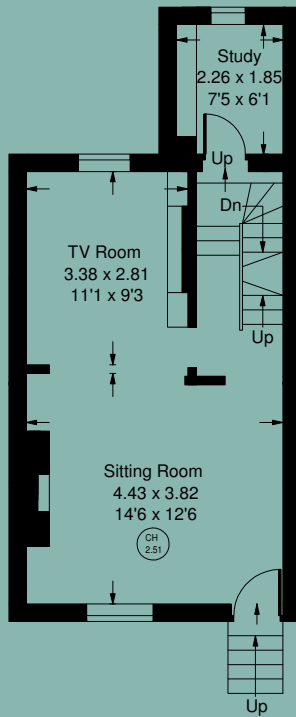
Approx. Gross Internal Area = 150.1 sq m / 1,616 sq ft

Vaults = 7.2 sq m / 77 sq ft

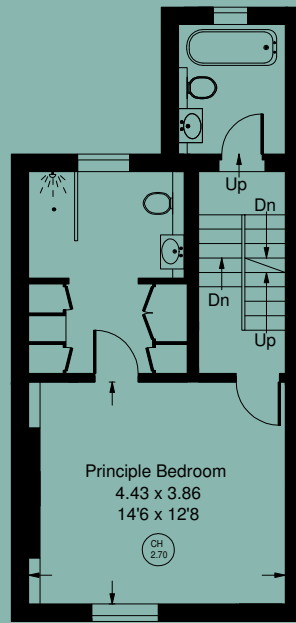
Total = 157.3 sq m / 1,693 sq ft



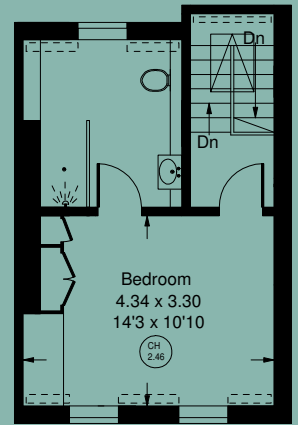
Lower Ground Floor



Raised Ground Floor

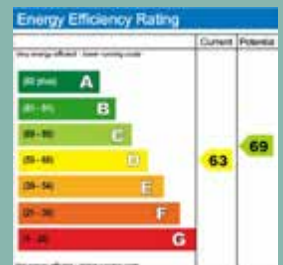


First Floor



Second Floor

= Reduced headroom below 1.5 m / 5'0"



Viewing: Strictly by appointment with Savills.

**Important notice**

Savills, their clients and any joint agents give notice that: 1: They are not authorised to make or give any representations or warranties in relation to the property either here or elsewhere, either on their own behalf or on behalf of their client or otherwise. They assume no responsibility for any statement that may be made in these particulars. These particulars do not form part of any offer or contract and must not be relied upon as statements or representations of fact. 2: Any areas, measurements or distances are approximate. The text, photographs and plans are for guidance only and are not necessarily comprehensive. It should not be assumed that the property has all necessary planning, building regulation or other consents and Savills have not tested any services, equipment or facilities. Purchasers must satisfy themselves by inspection or otherwise. 20/07/22 GC



Savills Sloane Street  
 139 Sloane Street  
 London SW1X 9AY  
 020 7730 0822  
[www.savills.co.uk/](http://www.savills.co.uk/)

