

A white musical staff graphic consisting of a horizontal line with a treble clef at the top center, and two vertical lines extending downwards from the ends of the staff to form a rectangular frame.

MOZART TERRACE

LONDON SW1

# GRADE I SPLENDOUR WITH 110FT (33M) LONG GARDEN



## DESCRIPTION

Wolfgang Amadeus Mozart stayed at 180 Ebury Street in the summer of 1764, formerly known as 'Fivefields Row' and renamed as Mozart Terrace following the composer's stay in the street. During his stay he composed his first symphony.

180 Mozart Terrace is a wonderful house in the heart of Belgravia. This Grade I Listed house was built in c.1730. Set back from the road by a paved garden at the front, it is a wide, south facing period house benefitting from many original features and unusual proportions.

The house has been reconfigured and refurbished to provide spacious contemporary space with the living and entertaining area opening onto a unique landscaped large garden to the rear with a separate private office building, guest flat and staff accommodation situated at the northern end. The main house is arranged over four storeys, the lower ground floor provides a family room, kitchen and cloakroom. The upper ground floor provides the entrance hall, formal dining room, large reception space and a drawing room leading out to the garden. The first floor comprises the master bedroom, dressing room and en suite bathroom and on the second floor there are two bedroom suites (one with en suite shower room and the other with en suite bathroom).

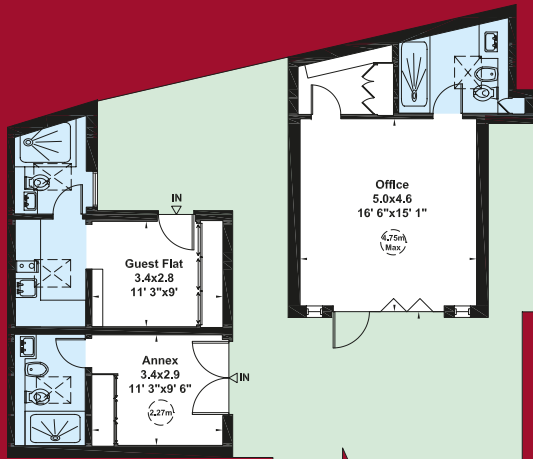
## LOCATION

Mozart Terrace is a highly regarded location situated in Belgravia close to both Sloane Square (0.3 miles) and Victoria station (0.4 miles). The popular Saturday farmer's market on Pimlico Green is located at the end of the road as well as the popular French restaurant La Poule au Pot.

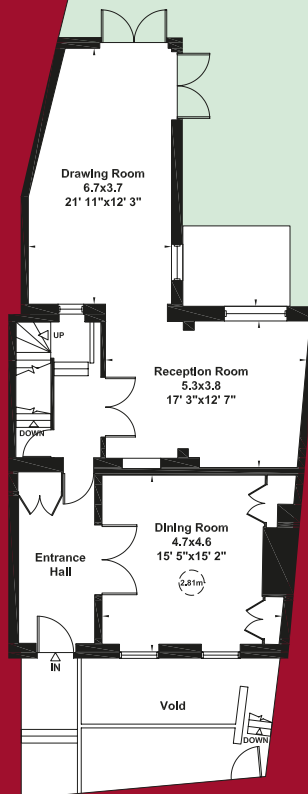


## ACCOMMODATION

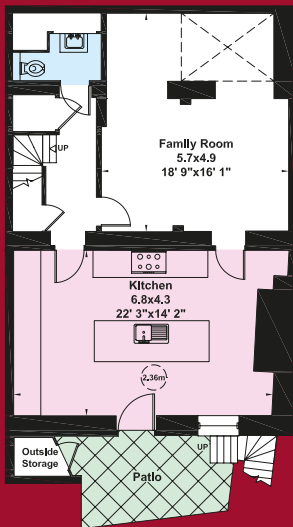
Entrance hall | Drawing room | Reception room | Dining room | Family room | Kitchen  
Master bedroom suite with dressing room | 2 bedroom suites | Cloakroom | Outside office building  
with shower room, separate staff bedroom suite and separate guest flat with kitchenette, bedroom and  
shower room | Mature garden to the rear measuring approximately 110 ft (33m) | Gross internal area  
approximately 360 sq m (3,871 sq ft)



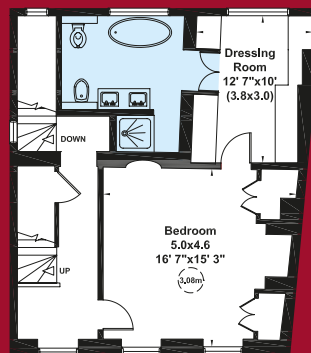
Garden  
33.8x6.5  
110'10"x21'4"



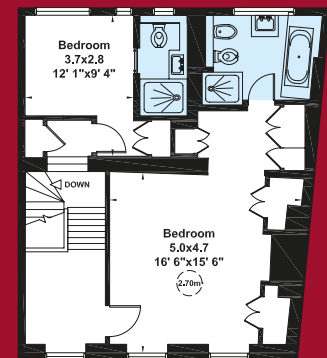
Upper Ground Floor



Lower Ground Floor



First Floor



Second Floor

## TERMS

Listing: Grade I  
Tenure: Freehold  
Price: Upon Application  
Local Authority: City of Westminster

Gross Internal Area (Approx.)  
360 sq m (3,871 sq ft)  
Including Outside Storage  
358 sq m (3,857 sq ft)  
Excluding Outside Storage

Office and Guest Flat  
71 sq m (767 sq ft)

Loft  
7m x 4.8m under 1.5m

House  
288 sq m (3,104 sq ft)

Viewing: Strictly by appointment with Savills.

**Important notice**

Savills, their clients and any joint agents give notice that: 1: They are not authorised to make or give any representations or warranties in relation to the property either here or elsewhere, either on their own behalf or on behalf of their client or otherwise. They assume no responsibility for any statement that may be made in these particulars. These particulars do not form part of any offer or contract and must not be relied upon as statements or representations of fact. 2: Any areas, measurements or distances are approximate. The text, photographs and plans are for guidance only and are not necessarily comprehensive. It should not be assumed that the property has all necessary planning, building regulation or other consents and Savills have not tested any services, equipment or facilities. Purchasers must satisfy themselves by inspection or otherwise. 19/01/29 TBK 362904



Savills Knightsbridge  
knightsbridge@savills.com  
020 7581 5234

Savills Sloane Street  
sloanestreet@savills.com  
020 7730 0822

savills.co.uk

