



TREVOR STREET

KNIGHTSBRIDGE | LONDON SW7



IMPRESSIVE GRADE II LISTED FAMILY HOUSE REFURBISHED TO A VERY HIGH SPECIFICATION

This impressive Grade II listed mid-19th century house, built of yellow brick with channelled stucco to the ground floor is arranged over basement, lower ground and 4 upper floors. It has a first floor balcony and a large west facing rear garden.

The property has been substantially extended and rebuilt internally to provide a very high quality interior designed family house. The specification (please see attached summary) includes full air conditioning, underfloor heating, Lutron lighting and a multi room audio and video home control system throughout.

The house has impressive entertaining and reception rooms including a 33ft (10m) drawing room and a 33ft (10m) family/media room. There are 4 bedrooms with en suite bathrooms on the upper floors.

Please see separate specification summary at the end of this brochure.





LOCATION

Trevor Street runs south from Knightsbridge into Trevor Square, located in the heart of Knightsbridge village. Knightsbridge Barracks and the wide open space of Hyde Park are immediately opposite.

The house is extremely well located for a range of shopping, restaurants and transport facilities in Knightsbridge. The iconic department stores of Harvey Nichols and Harrods, a wide selection of five star hotels, international music venues including Royal Albert Hall, Imperial College and schools are within close proximity, thus making it an exceptional international address.















ACCOMMODATION

- | 32 ft (10m) drawing room
- | Dining room
- | Kitchen/breakfast room
- | Media/family room
- | 4 bedrooms
- | 4 bathrooms/shower rooms
- | Staff room with en suite bathroom
- | Utility room and cloakroom
- | Air conditioning throughout & Lutron lighting
- | 33 ft (10m) west facing garden





Ordnance Survey © Crown Copyright 2017. All rights reserved.
Licence number 100022432. Plotted Scale - 1:1250





SPECIFICATION

- | Individually Designed High quality gloss lacquered Poggenpohl Kitchen from Germany

KITCHEN APPLIANCES

- | Gaggenau Double Oven with heated drawer
- | Miele Tall Integrated Fridge
- | Miele Tall Integrated Freezer
- | Miele Tall Integrated Wine Cooler
- | Miele Gas Hob
- | Electronically controlled ducted extractor fan by Falmec
- | Miele Microwave, Miele Steamer, Miele Coffee Machine & Miele Dishwasher
- | Bosch Washing Machine & Bosch Tumble Dryer in a separate Utility room
- | Electric Waste Disposal

BATHROOMS

- | Master Bedroom:
- | En-Suite Bathroom with Integrated High-Resolution Colour Aquavision 27" TV
- | Separate Shower with Thermostatic Shower Mixer by Hans Grohe of Germany
- | Cast Iron Bathtub by Bette with wall mounted Chrome Bath Spouts by Grohe
- | Luxury Italian Vanity Unit in Marble, with walls and floors covered in large slabs of Emperor porcelain
- | High Quality Chrome Heated Towel Rails by Zeta in all bathrooms
- | All other bathrooms including the guest bedroom covered in large slabs of porcelain tiles, floor to ceiling, with luxury vanities in smoked glass and Corian.
- | Guest Toilets in pencil porcelain mosaic in white and black colours

HEATING & COOLING

- | Gas Fired Central Heating with Vailant Boiler & MegaFlo Hot Water System
- | Underfloor Heating in combination with thermostatic radiator
- | Daikin Air Condition VRV System throughout
- | Central fresh air vent system

ELECTRICAL & HOME AUTOMATION

- | Lutron Lighting Management system with bespoke engraved Light Switches
- | Control 4 Home Automation and Music System throughout the property

- | Multi Room Audio & Video Home Control system throughout
- | Fibre Broadband Installation throughout
- | HD Video Distribution throughout
- | LED Lighting throughout
- | All electrical plates & sockets in enamel finish
- | Sky + HD satellite dish and radio antenna
- | 50" Flat TV screen by Panasonic in TV room in surround home cinema system

FINISHES

- | Pocket Sliding Doors in matt glass finish by Italian manufacturer Rimadesio, floor to ceiling height
- | Solid smoked Oak Open Tread Staircase
- | Smoked Stained Oak Flooring
- | Handmade Wool & Silk Carpets in all Bedrooms
- | Bespoke Italian Wardrobes by Estel in all Bedrooms
- | High quality Doors in white semi-matt finish by Shadbolt with s/steel ironmongery

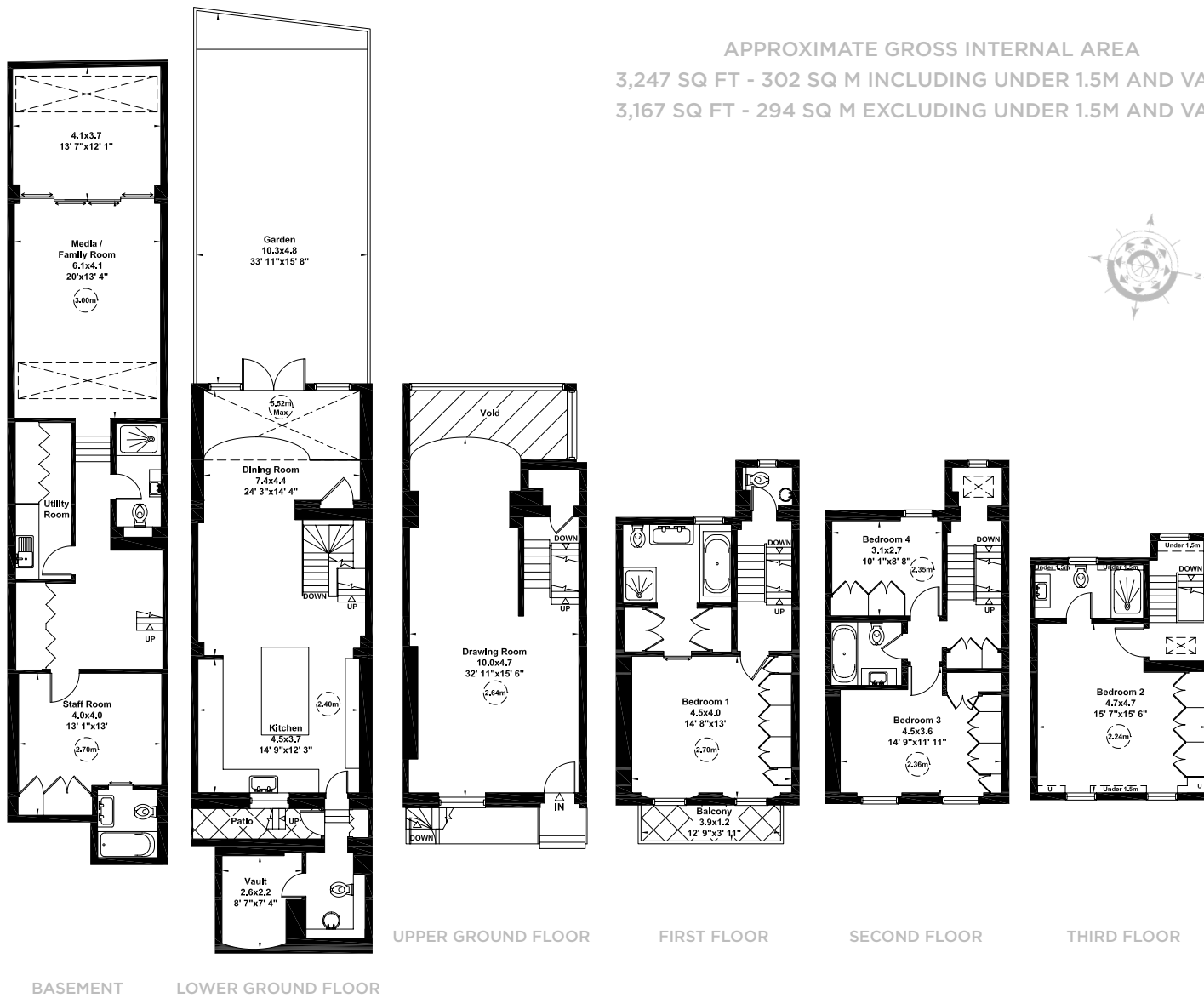
SECURITY

- | Insurance Approved, Comprehensive Burglar Alarm System
- | High Security Main Entrance Door with Multi Locking Mechanism and Registered Security Card Keys
- | Video Entry Phone
- | High Resolution Colour CCTV cameras fully integrated with the audio-visual system at the front and rear of the property
- | CCTV recording installation
- | Smoke Alarms hardwired to mains supply with battery Back-Up
- | Sprinkler System throughout
- | Panasonic Telephone System with Installation for 8 Telephone Lines

GENERAL

- | Lavender Planters at the front ground and basement floor front façade
- | Large Olive Trees in rear garden and turf area
- | Jasmine Climbers along the rear and side perimeter of the rear garden
- | External Garden seating area
- | Irrigation System throughout the Garden Area





TERMS

Tenure Freehold

Local Authority City of
Westminster

Price upon Application



Viewing: Strictly by appointment with Savills.

Important notice

Savills and their clients give notice that: 1: They are not authorised to make or give any representations or warranties in relation to the property either here or elsewhere, either on their own behalf or on behalf of their client or otherwise. They assume no responsibility for any statement that may be made in these particulars. These particulars do not form part of any offer or contract and must not be relied upon as statements or representations of fact. 2: Any areas, measurements or distances are approximate. The text, photographs and plans are for guidance only and are not necessarily comprehensive. It should not be assumed that the property has all necessary planning, building regulation or other consents and neither Savills have tested any services, equipment or facilities. Purchasers must satisfy themselves by inspection or otherwise. 15/05/19 NDK

Savills Sloane Street
sloanestreet@savills.com

020 7730 0822

Savills Knightsbridge
knightsbridge@savills.com

020 7581 5234

savills.co.uk



