

# GREVILLE HOUSE

SW1X



savills



## A BEAUTIFULLY REFURBISHED TWO BEDROOM APARTMENT ON THE SECOND FLOOR OF THIS WELL MAINTAINED BLOCK.

This newly refurbished two bedroom apartment benefits from an open-plan reception room/kitchen, complete with a dining area. The master bedroom features a walk-through dressing room and en suite bathroom. The apartment further features a second double bedroom, shower room and a small utility area.

The beautifully designed interiors give the property a bright and spacious feel and the practical layout provides plenty of storage, with built in cupboards throughout the hall and in the second bedroom.

Ideally situated in between Motcomb Street and Lowndes Square, Greville House benefits from proximity to Hyde Park and the numerous amenities of Sloane Street.

### ACCOMMODATION

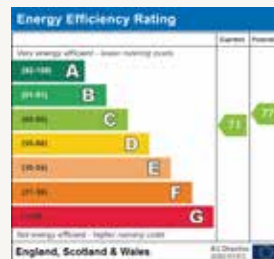
Reception room | 2 Bedrooms (1 en suite) | Additional Bathroom | Kitchen | Lift | Porter

### TERMS

Guide Price - £2,500,000

Tenure - Share of Freehold

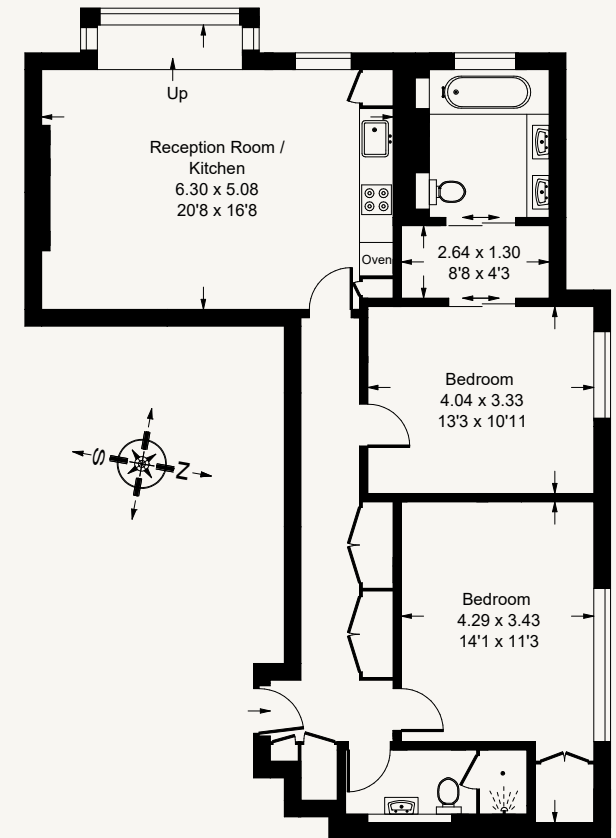
Local Authority – City of Westminster



## Greville House, SW1

DRAFT

Approx. Gross Internal Area  
90.2 sq m / 971 sq ft



### Savills Knightsbridge

188 Brompton Road,  
London, SW13 1HQ  
knightsbridge@savills.com

0207 581 5234

savills.co.uk

savills

Brochure by floorplanz.co.uk

Savills, their clients and any joint agents give notice that: 1. They are not authorised to make or give any representations or warranties in relation to the property either here or elsewhere, either on their own behalf or on behalf of their client or otherwise. They assume no responsibility for any statement that may be made in these particulars. These particulars do not form part of any offer or contract and must not be relied upon as statements or representations of fact. 2. Any areas, measurements or distances are approximate. The text, images and plans are for guidance only and are not necessarily comprehensive. It should not be assumed that the property has all necessary planning, building regulation or other consents and Savills have not tested any services, equipment or facilities. Purchasers must satisfy themselves by inspection or otherwise. 181012EB