



A MODERN ONE BEDROOM APARTMENT, GROUND FLOOR OF THIS POPULAR DEVELOPMENT, BENEFITTING FROM 24 HOUR CONCIERGE AND SECURITY

MOORE HOUSE, GROSVENOR WATERSIDE SW1

Guide Price £675,000, Leasehold

- Open plan reception room and kitchen
- Double Bedroom
- Bathroom
- Ground Floor
- 560 sq ft

Knightsbridge Flats

Tom Moore
tmoore@savills.com
+44 (0) 20 7581 5234

savills.co.uk

Description

This spacious apartment features a bright reception room with an open-plan kitchen and small dining area. There is also a substantial bedroom and bathroom with modern fixtures

The apartments in Moore House are finished with white Corian kitchens with Miele appliances, solid oak floors, underfloor heating, air cooling, cat5 wiring and satellite TV.

The building benefits from 24 hour security and porters, lifts, a gym & spa, and numerous cafes and amenities.

Tenure

Leasehold

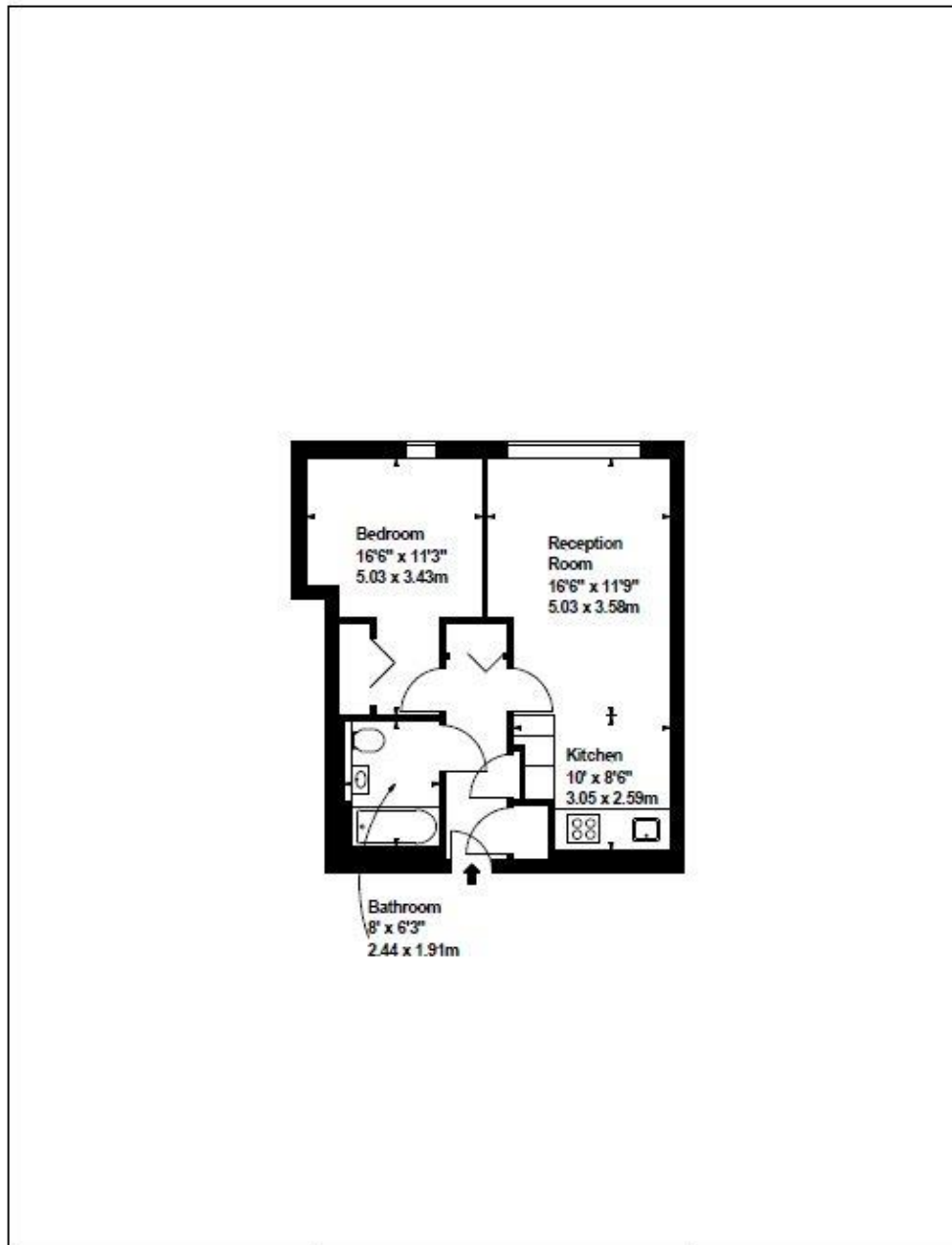
Local Area

Situated 0.5 miles from Sloane Square, Moore House is ideally positioned to enjoy all that the exclusive district of Chelsea has to offer, from world-class museums, theatres and restaurants, to a plethora of flagship designer stores and fast links to the City as well as London airports.



FLOORPLANS

Gross internal area: 560 sq ft, 52 m²



FLAT 9 MOORE HOUSE GROSVENOR WATERSIDE LONDON SW1 GROUND FLOOR Plans Drawn: 21.06.2012	APPROX. NET SALES AREA *	Surveyed and Drawn By: BKR Sunnyhill House 3-7 Sunnyhill Road London, SW16 2UG Tel: 0845 257 2023 Fax: 0845 257 2024 info@bkrfloorplans.co.uk www.bkrfloorplans.co.uk © BKR 2012
	559.74 Sq ft ² 52.00 M ²	
* As Defined by RICS - Code of Measuring Practice		Illustration For Identification Purpose Only. Not to Scale

Savills, their clients and any joint agents give notice that: 1. They are not authorised to make or give any representations or warranties in relation to the property either here or elsewhere, either on their own behalf or on behalf of their client or otherwise. They assume no responsibility for any statement that may be made in these particulars. These particulars do not form part of any offer or contract and must not be relied upon as statements or representations of fact. 2. Any areas, measurements or distances are approximate. The text, images and plans are for guidance only and are not necessarily comprehensive. It should not be assumed that the property has all necessary planning, building regulation or other consents and Savills have not tested any services, equipment or facilities. Purchasers must satisfy themselves by inspection or otherwise. 20190701EBEL

