



LOWNDES SQUARE, SW1X

savills

## Accommodation

Reception room ♦ Kitchen ♦ 2 double bedrooms ♦ Bathroom  
♦ Lift ♦ Porter

## Description

A charming two bedroom apartment situated on the fifth floor of this well-maintained portered block in one of Belgravia's premium garden squares. The flat benefits from beautiful views of Harrods department store and other London landmarks.

Lowndes Square is one of London's most prestigious and sought after addresses, while maintaining a quiet location on the borders of

Knightsbridge and Belgravia. Hyde Park, Harvey Nichols and the luxury boutiques of Sloane Street are all located within 200m of the square.

## Terms

Guide Price - £1,750,000

Tenure - Share of Freehold

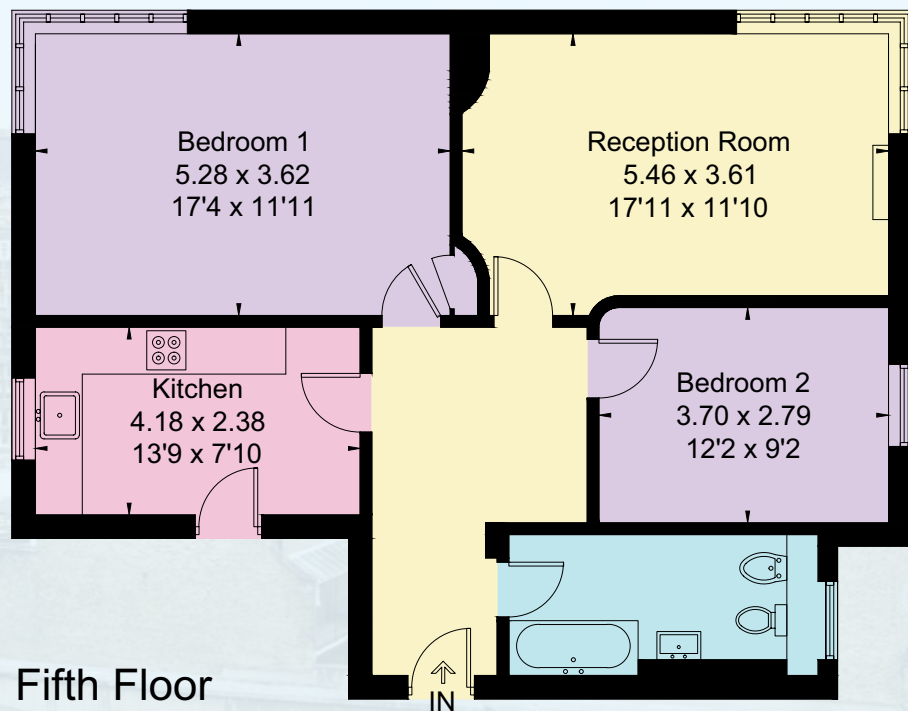
Local authority - City of Westminster

**Energy Performance:** A copy of the full Energy Performance Certificate is available upon request.

**Viewing:** Strictly by appointment with Savills.

## FLOORPLAN

Gross Internal Area (approx) = 79.3 sq m / 853 sq ft



## Savills Knightsbridge

188 Brompton Road,  
London, SW13 1HQ  
knightsbridge@savills.com

0207 581 5234

[savills.co.uk](http://savills.co.uk)

Savills, their clients and any joint agents give notice that: 1. They are not authorised to make or give any representations or warranties in relation to the property either here or elsewhere, either on their own behalf or on behalf of their client or otherwise. They assume no responsibility for any statement that may be made in these particulars. These particulars do not form part of any offer or contract and must not be relied upon as statements or representations of fact. 2. Any areas, measurements or distances are approximate. The text, images and plans are for guidance only and are not necessarily comprehensive. It should not be assumed that the property has all necessary planning, building regulation or other consents and Savills have not tested any services, equipment or facilities. Purchasers must satisfy themselves by inspection or otherwise. 180724ENR

Brochure by floorplanz.co.uk

