



## Two bedroom penthouse with panoramic views of St Aubin's Bay.

La Ruelle Vacluse Court, La Ruelle Vacluse, St. Helier, Jersey, JE2 3JD

Guide Price £1,245,000

savills

**Large penthouse apartment • Double garage and driveway parking for three cars • In purpose-built block of just three apartments • Lovely condition throughout • Own entrance, driveway and double garage • Panoramic views across St Aubin's Bay • Large balcony • Approx 1,660 sq ft**

**• 2 bedrooms • 2 bathrooms • 1 reception**

#### Local Information

In an elevated position in a very attractive location, above St Aubin's Bay, from where there are magnificent panoramic sea views. This quiet location is just off Mont Cochon on a little used road just near St Andrew's Park. Convenient to get to and from the airport and just a five minute drive to town, or walk down to local shops, the beach and a good bus route.

#### About this property

La Ruelle Vacluse Court is a purpose built block of just three apartments in a quiet location with breathtaking panoramic views across St Aubin's Bay.

The apartment is spacious with a large welcoming central entrance hall that can be accessed from the integral double garage or the front porch.

The new modern fitted kitchen has a breakfast bar to sit and enjoy the sea views and a serving hatch to the large lounge/diner.

Sea views and access to the balcony can also be enjoyed from the living room and the two large double bedrooms.

The principal bedroom has a good range of fitted bedroom furniture and a new modern bathroom with bath and walk in shower.

This penthouse apartment has its own entrance, an integral double garage and private driveway parking for three cars.

#### Tenure

Share Transfer

#### Viewing

All viewings will be accompanied and are strictly by prior arrangement through Savills Jersey Office.  
Telephone: +44 (0) 1534 722 227.







La Ruelle Vacluse Court, La Ruelle Vacluse, St. Helier, Jersey, JE2 3JD  
Gross Internal Area 1660 sq ft, 154 m<sup>2</sup>

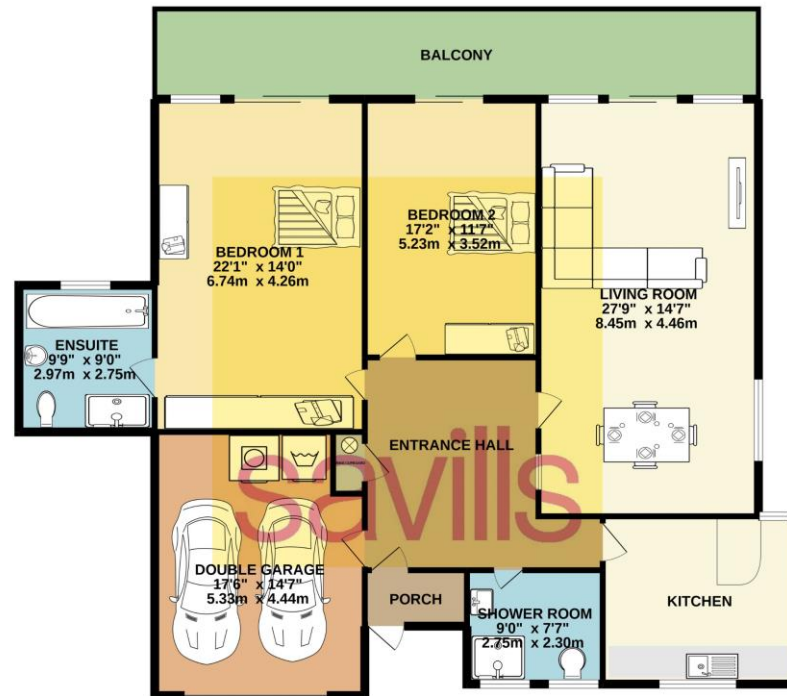


savills

savills.je

Savills Jersey  
+44 (0) 1534 722 227

GROUND FLOOR  
1660 sq.ft. (154.2 sq.m.) approx.



TOTAL FLOOR AREA : 1660 sq.ft. (154.2 sq.m.) approx.  
While every attempt has been made to ensure the accuracy of the floorplan contained herein, measurements of doors, windows, rooms and any other items are approximate and no responsibility is taken for any error, omission or mis-statement. This plan is for illustrative purposes only and should be used as such by any prospective purchaser. The services, systems and appliances shown have not been tested and no guarantee as to their operability or efficiency can be given.  
Made with letroplan ©2022

**Important Notice** Savills, its clients and any joint agents give notice that 1: They are not authorised to make or give any representations or warranties in relation to the property either here or elsewhere, either on their own behalf or on behalf of their client or otherwise. They assume no responsibility for any statement that may be made in these particulars. These particulars do not form part of any offer or contract and must not be relied upon as statements or representations of fact. 2: Any areas, measurements or distances are approximate. The text, photographs and plans are for guidance only and are not necessarily comprehensive. It should not be assumed that the property has all necessary planning, building regulation or other consents and Savills have not tested any services, equipment or facilities. Purchasers must satisfy themselves by inspection or otherwise.

