



Coastal duplex apartment with sea views

Apartment 22, The Carlton, Havre Des Pas, St Helier, JE2 4HP

Guide Price: £850,000

Rental Price: £2,400 pcm



Beachfront, duplex apartment • Spacious living space • Excellent condition throughout • Two undercover parking spaces • Private storage facility • Available to purchase or rent • Approx 1,658 sq ft

• 2 bedrooms, 2 bathrooms, 1 reception room

Local Information

These luxury apartments are situated at Havre Des Pas, overlooking St Clements Bay. Whilst the main town of St Helier is only a ten minute walk away, the property enjoys direct access to the promenade and beach. The airport is approximately fifteen minute drive, without the need to drive through the town.

About this property

This luxury duplex two-bedroom apartment has been built to the highest specification and is situated in a recognisable complex on the beachfront at Havre Des Pas.

The living room and separate eat in kitchen are located at penthouse level, with double doors with fitted blinds to balcony overlooking the sea. The two bedrooms and bathrooms make up the lower level.

It benefits from under floor heating throughout, with balconies off four of the rooms and fitted vertical blinds to maximise the sea views.

The apartment has two parking spaces and a storage facility in the parking area. It also benefits from a communal area with a landscaped garden.

The apartment is furnished to a high standard and has recently been painted throughout.

Monthly service charge of £183.70.

Services

All mains, under floor heating and air conditioning.

Tenure

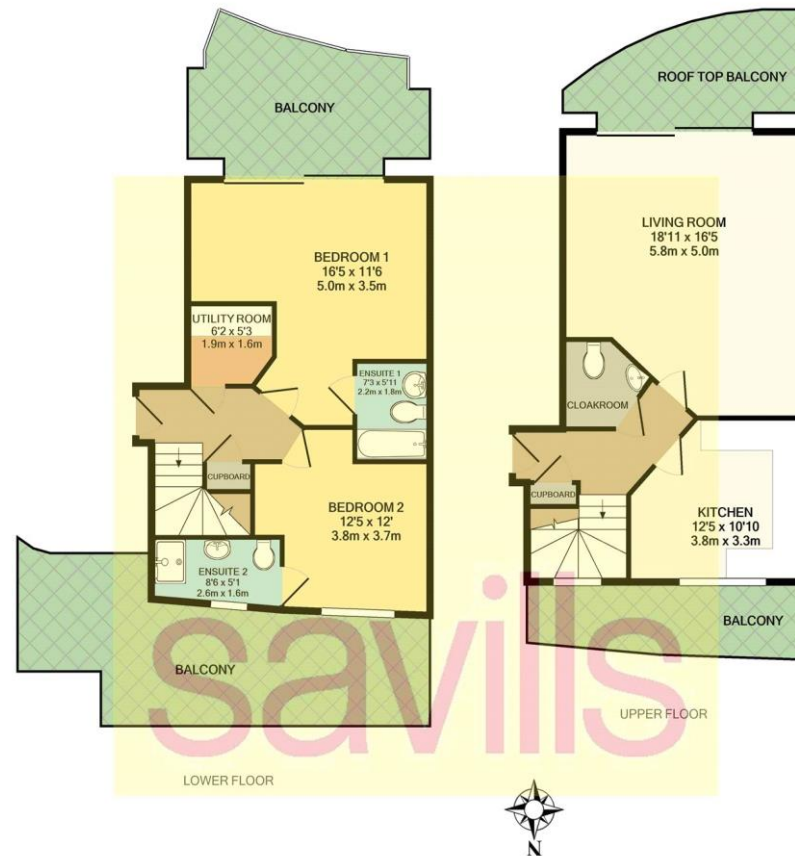
Share Transfer

Viewing

All viewings will be accompanied and are strictly by prior arrangement through Savills Jersey Office.
Telephone: 01534 722 227.







TOTAL APPROX. FLOOR AREA 1658 SQ.FT. (154.0 SQ.M.)

Whilst every attempt has been made to ensure the accuracy of the floor plan contained here, measurements of doors, windows, rooms and any other items are approximate and no responsibility is taken for any error, omission, or mis-statement. This plan is for illustrative purposes only and should be used as such by any prospective purchaser. The services, systems and appliances shown have not been tested and no guarantee as to their operability or efficiency can be given.

Important notice Savills, its clients and any joint agents give notice that 1: They are not authorised to make or give any representations or warranties in relation to the property either here or elsewhere, either on their own behalf or on behalf of their client or otherwise. They assume no responsibility for any statement that may be made in these particulars. These particulars do not form part of any offer or contract and must not be relied upon as statements or representations of fact. 2: Any areas, measurements or distances are approximate. The text, photographs and plans are for guidance only and are not necessarily comprehensive. It should not be assumed that the property has all necessary planning, building regulation or other consents and Savills have not tested any services, equipment or facilities. Purchasers must satisfy themselves by inspection or otherwise. 20200618SIAO