



Prestigious family home finished to an incredibly high standard throughout

Le Chemin Des Moulins, St Helier, JE2 4ZR

Guide Price: £12,000,000



Highly impressive family home • Substantial selection of reception rooms • Immaculate grounds and private driveway approach • Swimming pool and tennis court • Characterful feature lake • Private yet convenient location

• 7 bedrooms • 5 bathrooms • 8 reception rooms

Local Information

Located in the South of the island, in the convenient Parish of St Helier.

Although in an idyllic, private setting, Landscape Farm is only a short journey to local schools and the centre of town.

Approximately 15 minutes to the airport with beaches and great restaurants all a short distance away.

About this property

Landscape Farm is a simply magnificent property, exuding grandeur and sophistication, set within manicured grounds and approached via a private gated driveway.

This extensive family home provides plentiful living space, with well apportioned reception rooms for entertaining. The impressive standard of interior design is noted throughout, designed by Henrietta Spencer-Churchill, it is certainly difficult to fault.

Surrounding this stately home, is a separate lodge, serving two spacious, self-contained two and three bedroom units of guest or staff accommodation. This ancillary accommodation also benefits from generous garaging.

Externally, set within beautifully maintained gardens, is a hard tennis court, swimming pool, al-fresco sun terraces and a feature lake.

Tenure

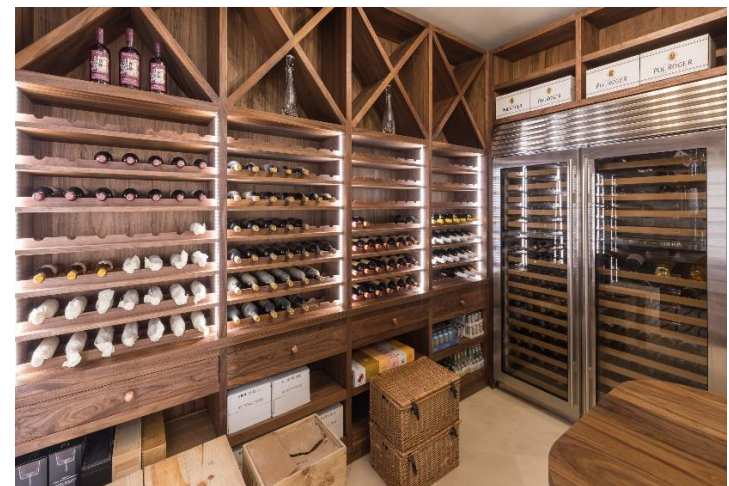
Freehold

Viewing

All viewings will be accompanied and are strictly by prior arrangement through Savills Jersey Office.
Telephone: 01534 722 227.







Le Chemin Des Moulins, St Helier, JE2 4ZR
Gross Internal Area TBC

Floorplan to follow

Important notice Savills, its clients and any joint agents give notice that 1: They are not authorised to make or give any representations or warranties in relation to the property either here or elsewhere, either on their own behalf or on behalf of their client or otherwise. They assume no responsibility for any statement that may be made in these particulars. These particulars do not form part of any offer or contract and must not be relied upon as statements or representations of fact. 2: Any areas, measurements or distances are approximate. The text, photographs and plans are for guidance only and are not necessarily comprehensive. It should not be assumed that the property has all necessary planning, building regulation or other consents and Savills have not tested any services, equipment or facilities. Purchasers must satisfy themselves by inspection or otherwise. 20200605SIAO

