



Luxury apartment in the heart of Gorey village

Royal Bay Apartments, La Rue Horman, Grouville, JE3 9EJ

Guide Price: £625,000



Share Transfer • Spacious first floor apartment • Renovated to a high standard throughout • Light-filled living space • Balcony with views over Gorey common • Two parking spaces and frequent bus service • Approx 1026 sq ft • 2 bedrooms • 2 bathrooms • 1 reception room

Local Information

Nestled in the heart of Gorey Village where you can walk to everything the village has to offer, local shops, restaurants and the beach. Just a 10 minute walk is Gorey Pier where some of the finest restaurants in Jersey can be found. The Royal Golf course and Grouville Primary school can be reached in 2 minutes by car. The regular no 1 bus to take you town is just a 2 minute walk away.

About this property

This charming first floor apartment is part of the prestigious purpose built Royal Bay development, with pleasant green views from every window. The building is very well maintained and secure with a lift to all floors.

From the moment you walk in to the apartments spacious hallway you are greeted with a luxurious traditional feel following from the extensive recent refurbishment and professional interior designer.

The spacious living space comprises an open plan lounge and dining room, allowing optimum space for entertaining. French doors open from this living space to a Juliette balcony with views over Grouville common.

Both double bedrooms are en suite with fitted wardrobes and large windows providing lots of natural light.

There is ample storage throughout the apartment, including a large boarded attic, a separate store cupboard, a separate utility room and a cloakroom.

Service charge £257.83 per month managed by Morganfinch

Services All mains including Gas. New radiators throughout and new gas boiler.

Tenure

Share Transfer

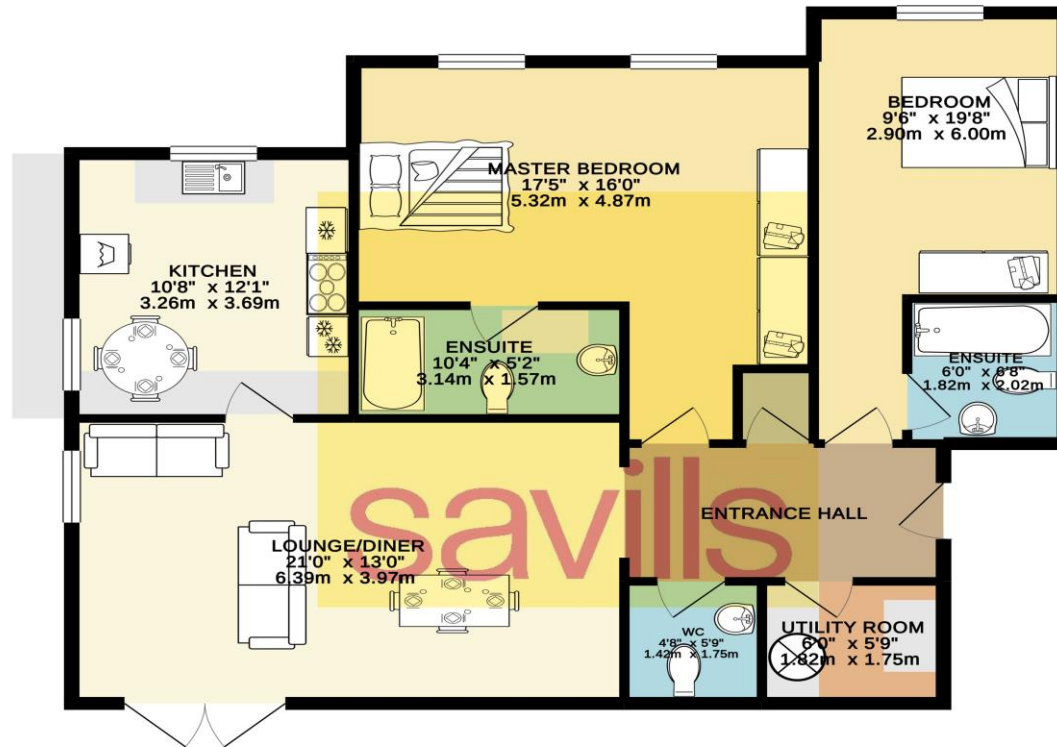
Viewing

All viewings will be accompanied and are strictly by prior arrangement through Savills Jersey Office.
Telephone: 01534 722 227.





GROUND FLOOR 1026 sq. ft.
(95.4 sq. m.)



TOTAL FLOOR AREA: 10516sq. ft. (977.0 sq. m.) approx.

Whilst every attempt has been made to ensure the accuracy of the floorplan contained here, measurements of doors, windows, rooms and any other items are approximate and no responsibility is taken for any error, omission or mis-statement. This plan is for illustrative purposes only and should be used as such by any prospective purchaser. The services, systems and appliances shown have not been tested and no guarantee as to their operability or efficiency can be given.

Important notice Savills, its clients and any joint agents give notice that 1: They are not authorised to make or give any representations or warranties in relation to the property either here or elsewhere, either on their own behalf or on behalf of their client or otherwise. They assume no responsibility for any statement that may be made in these particulars. These particulars do not form part of any offer or contract and must not be relied upon as statements or representations of fact. 2: Any areas, measurements or distances are approximate. The text, photographs and plans are for guidance only and are not necessarily comprehensive. It should not be assumed that the property has all necessary planning, building regulation or other consents and Savills have not tested any services, equipment or facilities. Purchasers must satisfy themselves by inspection or otherwise. 20191108SIAO