



Beautiful 3 bedroom penthouse with breathtaking views

7 The Pochard, La Rue Voisin, Jersey, JE3

Guide Price - £1,495,000 - Flying Freehold

savills

Beautiful Coastal penthouse • Exclusive gated development • Breathtaking Sea Views • Direct access to an award winning bay • 3 bedroom suites • 2 undercover parking spaces Approx 2100 sq ft.

Local Information

Located in one of Jersey's finest southerly bays with terrific 180 degree views out to sea from a large private balconies and terraces. It is a short drive and staying within the parish to St. Brelade where all your needs are cared for: Doctors, dentists, schools, shops the list goes on and on. The beach at Portelet Bay is accessed via a foot path and you can be on the beach within a few minutes of walking out your front door. Lovely woodland and cliff top path walks are also on your doorstep as well as a local pub which can be reached via a five minute walk over the headland path.

About this property

This exceptional duplex Penthouse apartment is situated on the top two floors of the The Pochard, in the exclusive gated Portelet development.

This extremely beautiful and well-appointed three bedroom, three bathroom apartment is in perfect condition throughout and offers a tranquil retreat with breathtaking sea views.

From the moment you wake in the Master bedroom suite, the floor to ceiling windows lets you enjoy the majestic view. It's all about the stunning views; as you walk through the door into the spacious hallway towards the open plan

living room/kitchen/diner the southerly aspect is the "Wow Factor".

The apartment briefly comprises; three double bedrooms, three bathrooms, large open plan living and eating space, modern fully fitted kitchen, separate utility room and cloakroom.

Outside

Large balcony off the living space and with prime views over Portelet bay. Parking for two cars is in the underground secure garage and there are plenty of visitor spaces. The development also benefits from communal gardens and a tennis Court. There is direct access to the beach.

Tenure

Flying Freehold

Viewing

All viewings will be accompanied and are strictly by prior arrangement through Savills Jersey Office.
Telephone: +44 (0) 1534 722 227.





7 The Pochard, La Rue Voisin, Jersey, JE3 8PS
Gross Internal Area 2110 sq ft, m²

Savills
Jersey
+44 (0) 1534 722 227
Savills.je

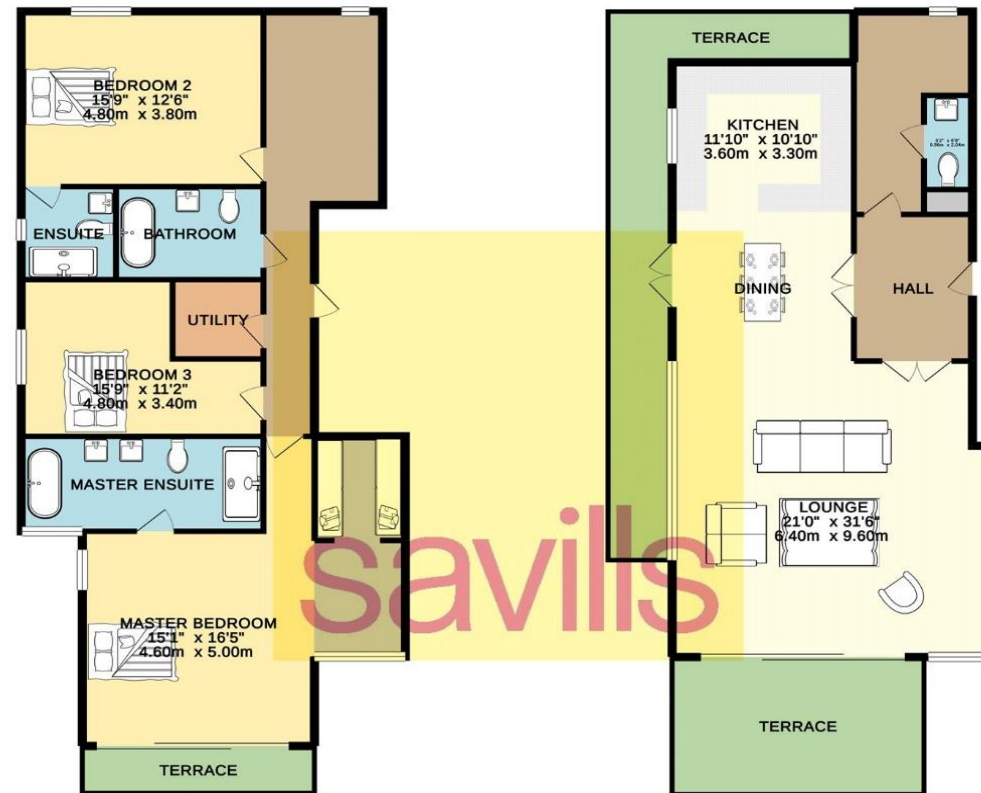


savills

savills.je

LOWER FLOOR
1090 sq. ft. (101.2 sq. m.) approx.

UPPER FLOOR
876 sq. ft. (81.4 sq. m.) approx.



TOTAL FLOOR AREA : 2110sq. ft. (196.0 sq. m.) approx.

Whilst every attempt has been made to ensure the accuracy of the floorplan contained here, measurements of doors, windows, rooms and any other items are approximate and no responsibility is taken for any error, omission or mis-statement. This plan is for illustrative purposes only and should be used as such for any prospective purchaser. The services, systems and appliances shown have not been tested and no guarantee as to their operability or efficiency can be given.
Made with Measure 11/2016

Important notice Savills, its clients and any joint agents give notice that 1: They are not authorised to make or give any representations or warranties in relation to the property either here or elsewhere, either on their own behalf or on behalf of their client or otherwise. They assume no responsibility for any statement that may be made in these particulars. These particulars do not form part of any offer or contract and must not be relied upon as statements or representations of fact. 2: Any areas, measurements or distances are approximate. The text, photographs and plans are for guidance only and are not necessarily comprehensive. It should not be assumed that the property has all necessary planning, building regulation or other consents and Savills have not tested any services, equipment or facilities. Purchasers must satisfy themselves by inspection or otherwise. 20191202DLEB

